

## Concrete Earth Inspection Housing

The Wallis concrete inspection pits are load rated to 4,500kg and are suitable for most types of earthing and lightning protection installations.

Lids are available in 2 types, one with a central lifting eye for industrial applications. The other with a unique plain lid non trip surface ideal for public and pedestrian areas, shopping arcades, supermarket forecourts, Mosques and cinemas where trip hazards are a potential problem.

The base is designed to accept a diagonal earth bar with 5 or 7 terminations (EBC05 and EBC07).

If an alternative high load inspection pit is required the Heavy Duty Inspection Pit (EPP001W) is recommended. Ideal for areas where high loads or small wheel vehicles are used, rated up to 6,000kg, lockable and available in black or grey.

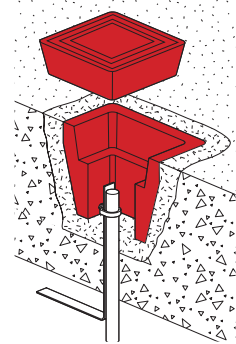
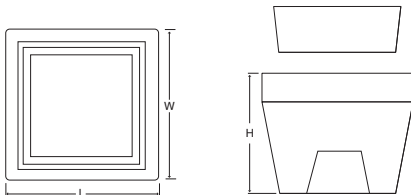


Lid Type	L mm	W mm	H mm	Unit Weight kg	Pack Quantity	Part Number
Non Trip Plain Lid	315	315	160	24	1	ERH 01W
Central Lifting Eye			185	26		ERH 02W
Central Lifting Eye	315	315	185	26		ERH 07W
Non Trip Plain Lid	450	450	450	72		ERH 450

Material: Concrete.



BS EN 62561-5



## Inspection Housing Earth Bars (for Concrete Earth Inspection Housings)

These earth bars fit into the slots provided in the concrete inspection housings and are used when multiple connections to the earth rod are required.

No. Holes	Hole Ø mm	L mm	W mm	H mm	Unit Weight kg	Pack Quantity	Part Number
5	11	285	30	6	0.49	1	EBC 05
7					0.50		EBC 07

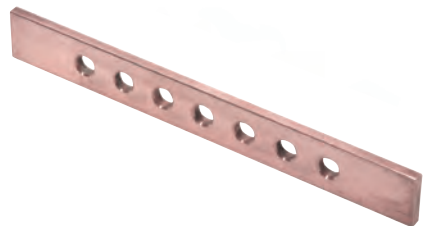
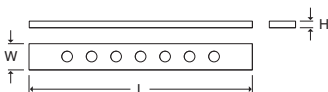
Material: Copper to BS EN 13601.



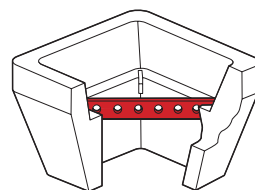
BS EN 62561-1 Class H

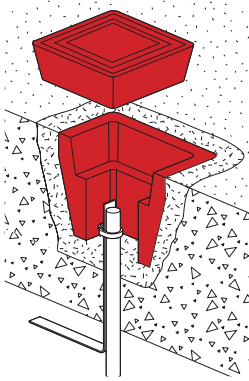


Tightening torque 20 Nm



EBC 07





### Concrete Earth Inspection Housing with Stainless Steel Plate

This Wallis concrete earth inspection housing also comes complete with a Stainless Steel tag or identification label. These Wallis concrete pits are becoming increasingly common and are used on large sites where pit location and identification is important. Wallis have supplied these concrete pits to Shell petrochemical plants in Nigeria, water authorities in UAE as well as rail authorities in the UK and are bespoke to the client's needs. We offer various numbering, various wording and various languages including Arabic.

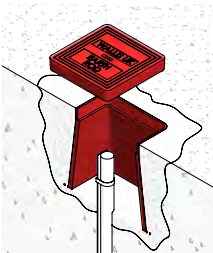
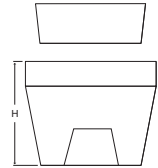
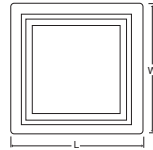
The base is designed to accept a diagonal earth bar with 5 or 7 terminations (EBC05 and EBC07).

Lid Type	L mm	W mm	H mm	Unit Weight kg	Pack Quantity	Part Number
Non Trip Plain Lid	315	315	160	24	1	ERH 03W

Material: Concrete.



BS EN 62561-5



### Heavy Duty Earth Inspection Housing with Concrete Lid

The Wallis 'lightweight' but heavy duty earth housing is available with a concrete lid. Clients often prefer the convenience of the lightweight pit for transportation, freight and handling along with the assurance of the colour of the concrete lid as the colour and texture of the concrete lid blends well with the surrounding cement. This hybrid pit is load rated to 4,500 kilograms and is suitable for most commercial and pedestrian applications. The base has three built-in slots for locating earth bars.

Lid Type	L x W mm	H mm	L1 x W1 mm	Unit Weight kg	Pack Quantity	Part Number
Central Lifting Eye	306	216	90 x 90	860	1	ERH 10L

Material: Polypropylene with a Concrete Lid.

