

Copperbond Earth Rods

Wallis copperbond earth rods offer installers the most economical method of achieving a low earth resistance.

Each rod has a high tensile strength, low carbon steel core. 99.95% pure copper is applied electrolytically and forms a metallurgical bond between the steel core and the copper. This combination makes the rod ideal for deep driving whilst also provides lasting resistance to corrosion.

The threads are formed by a cold rolling process which ensures strength and maintains the molecularly bonded copper covering along the full length of the threads. Cold-rolled threads are stronger than cut-threads.

The standard copper thickness is 0.25mm. Greater copper thicknesses are also available. Please contact our sales office for further information.

Threaded

Nominal Size	L mm	Thread Size (UNC-2A)	Shank D mm	L1 mm	Unit Weight kg	Pack Quantity	Part Number
1/2"	1200	9/16"	12.7	30	1.18	5	ERB 412
	1500				1.55		ERB 415
	1800				1.76		ERB 418
	2400				2.36		ERB 424
5/8"	1000	5/8"	14.2	30	1.28	5	ERB 110
	1200				1.53		ERB 112
	1200			40	1.53		ERB 112S
	1500				1.95		ERB 115
	1800			30	2.23		ERB 118
	2400				3.00		ERB 124
	2400			40	3.00		ERB 124S
	3000				30		3.70
3/4"	1000	3/4"	17.2	35	1.65	5	ERB 200
	1200				2.20		ERB 212
	1500				2.76		ERB 215
	1800				3.26		ERB 218
	2400				4.45		ERB 224
	3000				5.48		ERB 230
1"	2400	1"	23.0	50	2.43	5	ERB 324
	3000				3.04		ERB 330

Material: Pure copper molecularly bonded onto a steel core

Unthreaded

Nominal Size	L mm	Shank D mm	Unit Weight kg	Pack Quantity	Part Number
3/8"	1200	9.5	0.62	5	ERB 012
1"	3000	25.4	22.50	5	ERB 930

Material: Pure copper molecularly bonded onto a steel core.

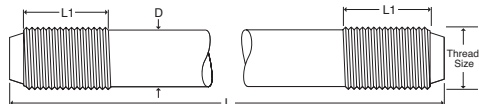


BS EN 62561-2

UL467



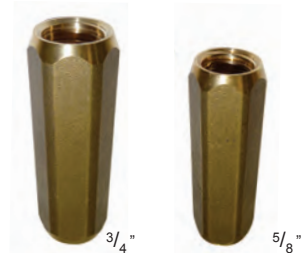
ERB424 ERB124 ERB130
ERB224 ERB230 ERB324



Threaded Couplings

These Wallis high-strength couplings are used for joining copperbond threaded earth rods together. They facilitate deep driving and ensure continual contact between the rods both during and after installation.

The coupling also protects the earth rod threads during installation with the threaded driving head. There is a lead-in for ease of assembly and the hexagonal design allows for grip and keeping the coupling tight when driving into the ground. All Wallis couplings are manufactured from a high copper content alloy ensuring excellent corrosion resistance.



Type	L mm	D mm	Unit Weight kg	Pack Quantity	Part Number
1/2"	68	18	0.07	25	ERBO 12
5/8"	68	20	0.12		ERBO 16
3/4"	78	25	0.14		ERBO 20
1"	100	31	0.25		ERBO 25

Material: High Copper Alloy

Type	L mm	D mm	Unit Weight kg	Pack Quantity	Part Number
5/8"	80	21	0.08	25	ERBO 16S

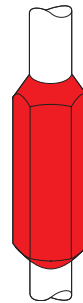
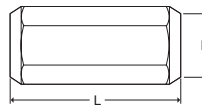
Material: Silicon Bronze.



BS EN 62561-1 Class H



Tightening torque 40 Nm



Threaded Driving Heads

These Wallis re-usable threaded driving heads are suitable for driving copperbond threaded earth rods by hand or with a power hammer. The driving head screws into the threaded coupling to allow deep driving of the earth rods.

Type	L mm	D mm	Unit Weight kg	Pack Quantity	Part Number
1/2"	50	20	0.08	25	ERBD 12
5/8"	55	22	0.08		ERBD 16
3/4"	60	25	0.13		ERBD 20
3/4"	120	22	0.30		ERBD 21*
3/4"	60	30	0.15		ERBD 25

Material: Steel.

* The ERBD 21 is a driving head with a 3/4" thread and a 5/8" head.



ERBD 16



ERBD 21

Type	L mm	D mm	Unit Weight kg	Pack Quantity	Part Number
5/8"	47	27	0.08	25	ERBD 16S

Material: Copper Coated Steel.

