

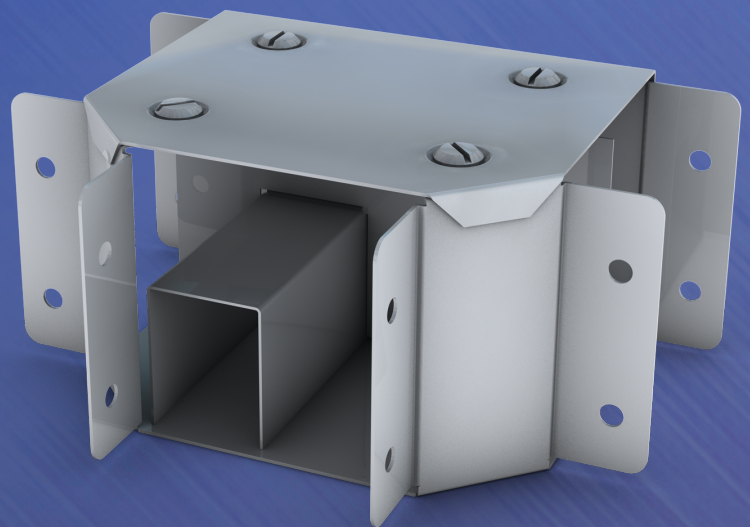
## SECTION 2

# MULTI-COMPARTMENT TRUNKING SYSTEMS

With Multi-Compartment Trunking, dividing fillets are normally supplied spot-welded in position, but can also be supplied loose for fixing on site by drilling and screwing. Spot welds can be treated with Norgalv paint as an extra on request. Purpose-made trunking can be supplied with conduit entries at pre-determined regular intervals in sides and in dividing fillets.

When trunking is mounted vertically or in the inverted position it is recommended that Cable Supports should be fitted.

Bends, Tees, Intersections, etc, can be supplied complete with Dividing Fillets In Tees with Top Lids and in Intersection Boxes, Cross-over Bridges are fitted. Several example assemblies in Tees and Bends with unequal compartments are shown in this section.  
Three, four or more compartment trunking is available.



ACCREDITED TO THE FOLLOWING STANDARDS



## HOW TO ORDER (Without going round the bend!)

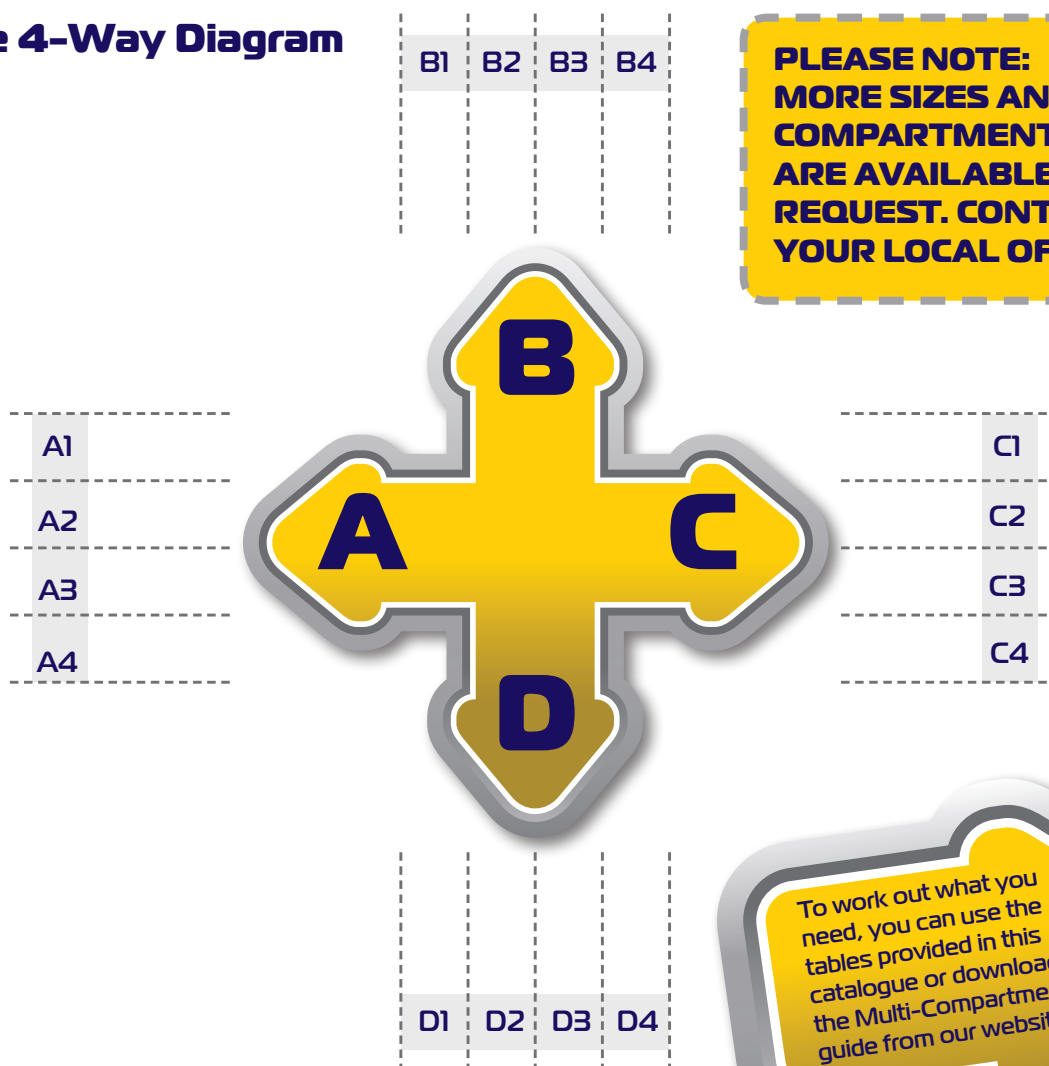
PLEASE NOTE: This section is to be used as an aid when ordering unequally divided and TOP LID and therefore directional Trunking Fittings. For INSIDE or OUTSIDE LID fittings all we need to know is the size of each compartment, therefore the steps below are only applicable for TOP LID Accessories.

### STEP 1: Trunking Direction

Using the four-way diagram shown, decide what scenario best suits your situation. This will enable you to give information about the trunking sizes you are working with and the size of each trunking compartment. This information will then be used to fill in an Order table later in step 3.

PLEASE NOTE: A, B, C and D represent a plan view of trunking in four directions.

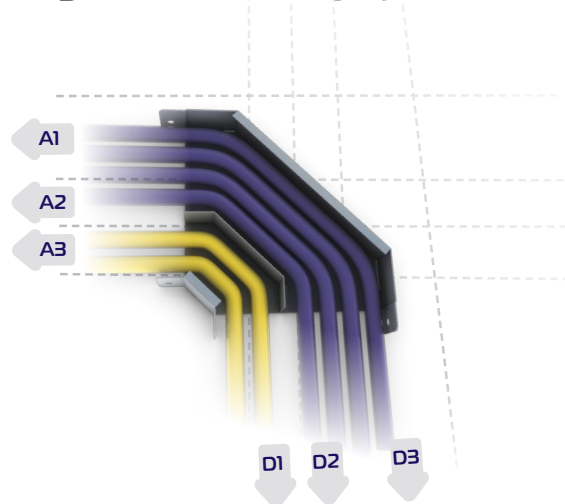
#### The 4-Way Diagram



## STEP 2: Size of Trunking

Tell us what size of trunking you are using.

(Trunking Direction Example)

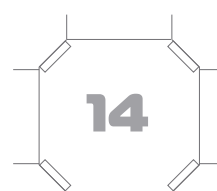
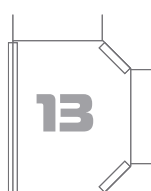
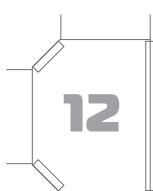
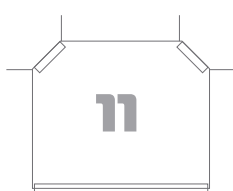
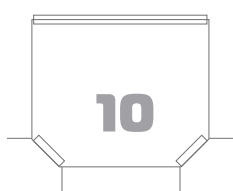


## STEP 3: Fitting

Select the appropriate fitting you require from the 'Fitting Key' shown at the bottom of this page. Each fitting has a unique number which should then be used to fill in the order table.

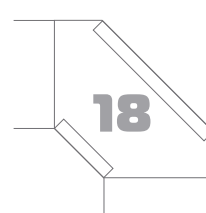
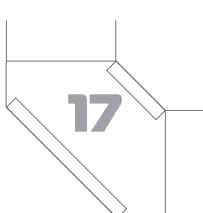
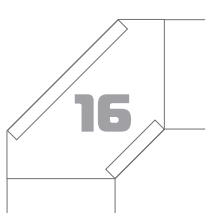
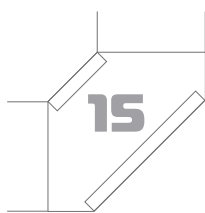
### Fitting Key CHOOSE FITTING NUMBER BELOW:

#### TEE:



#### INTERSECTION:

#### BEND:





## STEP 4:

### Compartment Size & Cable Run

State the compartment sizes and where the cabling will run from/to by filling in Table 2.

The remaining spaces should be left blank. For example, in this instance: Cable runs: Compartment B2 goes to C1, and B4 goes to C2.

**Table 2** Trunking Compartment sizes & Cable runs

(Example)

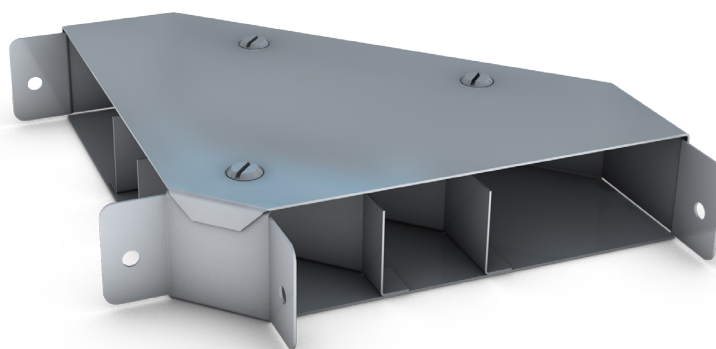
		To... (State Measurements in mm)															
		A1	A2	A3	A4	B1	B2	B3	B4	C1	C2	C3	C4	D1	D2	D3	D4
From... (State Measurements in mm)	A1																
	A2																
	A3																
	A4																
	B1																
	B2									50							
	B3																
	B4									75							
	C1																
	C2																
	C3																
	C4																
	D1																
	D2																
	D3																
	D4																



**(EXAMPLE: A)**

Trunking Size 100 x 50 x 3 Compartments (code: TK42x3)

90° or 45° Top Lid Bend with smaller compartments to the inside.

**STEP 1** Trunking Direction**STEP 2** Size of Trunking

Trunking Size (mm x mm)	
A	100 x 50
D	100 x 50

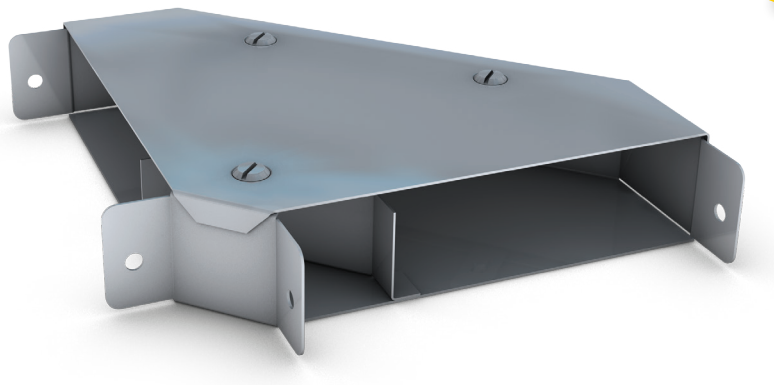
**STEP 3** Fitting**STEP 4** Compartment Size & Cable Run

		To... (mm)		
		D2	D3	D4
From... (mm)	A1			50
	A2		25	
	A3	25		

## (EXAMPLE: B)

Trunking Size 150 x 50 x 2 Compartments (code: TK62x2)

90° or 45° Top Lid Bend with smaller compartments to the outside.



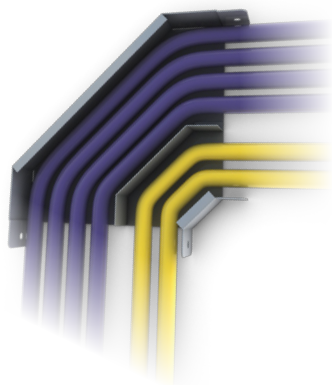
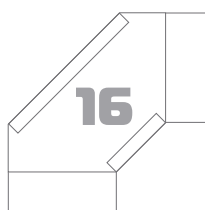
### STEP 1 Trunking Direction



### STEP 2 Size of Trunking

Trunking Size (mm x mm)	
A	150 x 50
D	150 x 50

### STEP 3 Fitting



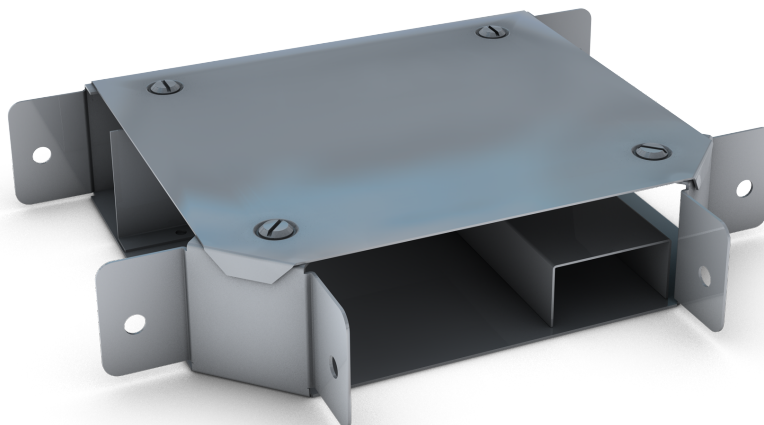
### STEP 4 Compartment Size & Cable Run

		To... (mm)		
		C2	C3	C4
From... (mm)	D2			
	D3		100	
	D4			50

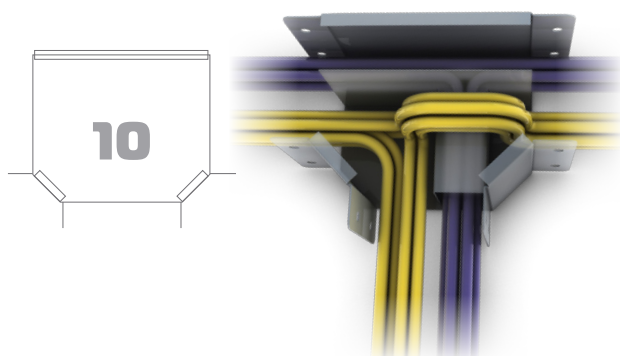
**(EXAMPLE: C)**

Trunking Size 150 x 50 x2 Compartments (code: TK62x2)

Top Lid TEE with underpass taking cables from the right hand compartment out from the rear compartment.

**STEP 1** Trunking Direction**STEP 2** Size of Trunking

Trunking Size (mm x mm)	
A	150 x 50
D	150 x 50

**STEP 3** Fitting**STEP 4** Compartment Size & Cable Run

		To... (mm)					
		C1	C2	C3	C4	D1	D2
From... (mm)	A1	50					50
	A2		100			100	
	A3						





## (EXAMPLE: D)

Trunking Size 200 x 100 x 3 Compartments (code: TK84x3)

Top lid Tee with 2 No crossover pieces to allow cables to Tee off in the correct order to suit the branched trunking supply.



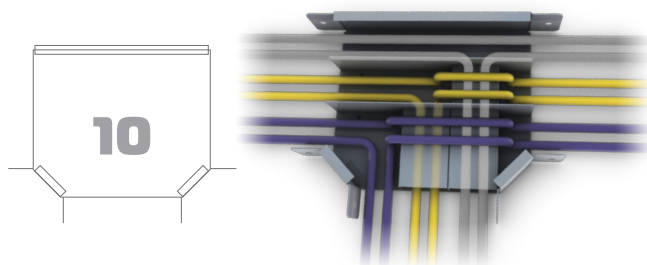
### STEP 1 Trunking Direction



### STEP 2 Size of Trunking

Trunking Size (mm x mm)	
A	200 x 100
D	200 x 100

### STEP 3 Fitting



### STEP 4 Compartment Size & Cable Run

		To... (mm)							
		C1	C2	C3	C4	D1	D2	D3	D4
From... (mm)	A1	75							75
	A2		75					75	
	A3			50			50		



# ORDER SHEET

Using steps 1 to 4 as outlined in this section, please complete the two specification tables below which we will use to tailor the correct multi-compartment product for your needs.

**Table 1**  
Trunking Sizes

Trunking Size (mm x mm)	
<b>A</b>	
<b>B</b>	
<b>C</b>	
<b>D</b>	

Please scan and email or fax to your closest depot.

**Fitting Number:**

**Table 2** Trunking Compartment sizes & Cable runs



		To... (State Measurements in mm)															
		A1	A2	A3	A4	B1	B2	B3	B4	C1	C2	C3	C4	D1	D2	D3	D4
From... (State Measurements in mm)	A1																
	A2																
	A3																
	A4																
	B1																
	B2																
	B3																
	B4																
	C1																
	C2																
	C3																
	C4																
	D1																
	D2																
	D3																
	D4																

## Fax and Email Details

UNITRUNK (LISBURN)  
fax: +44 (0) 2892 625101  
email: lisburn@unitrunk.co.uk

UNITRUNK (IRELAND)  
fax: +353 (0) 1 8223533  
email: dublin@unitrunk.ie

UNITRUNK (SCOTLAND)  
fax: +44 (0) 1506 461969  
email: livingston@unitrunk.co.uk

UNITRUNK (NORTH EAST)  
fax: +44 (0) 191 4108702  
email: northeast@unitrunk.co.uk

UNITRUNK (MANCHESTER)  
fax: +44 (0) 161 3361188  
email: manchester@unitrunk.co.uk

UNITRUNK (WOLVERHAMPTON)  
fax: +44 (0) 1902 714105  
email: wolverhampton@unitrunk.co.uk

UNITRUNK (HARLOW)  
fax: +44 (0) 1279 444405  
email: harlow@unitrunk.co.uk

UNITRUNK (BRISTOL)  
fax: +44 (0) 1179 382998  
email: bristol@unitrunk.co.uk

## MULTI-COMPARTMENT TRUNKING SYSTEMS

## CODE GUIDE

## STEP 1 : CHOOSE PRODUCT FINISH



PRE-GALVANISED



STAINLESS STEEL



POWDER COATED

## STEP 2: CHOOSE PRODUCT

CODE	PRODUCT NAME
<b>TK</b>	Trunking (3m lengths)
<b>LT</b>	Lighting Trunking (3/3.5/4.5/6m lengths)
<b>GSL</b>	Galvanised Steel Lid (Width Only)
<b>TC</b>	Trunking Coupling
<b>DF</b>	Dividing Fillet (loose) (Height Only)
<b>GTB</b>	Gusset Bend (Top Lid)
<b>GIB</b>	Gusset Bend (Inside Lid)
<b>GOB</b>	Gusset Bend (Outside Lid)
<b>STE</b>	Sharp Elbow (Top Lid)
<b>SIE</b>	Sharp Elbow (Inside Lid)
<b>SOE</b>	Sharp Elbow (Outside Lid)
<b>GTT</b>	Gusset Tee (Top lid)
<b>GIT</b>	Gusset Tee (Inside Lid)
<b>GOT</b>	Gusset Tee (Outside Lid)
<b>STT</b>	Sharp Tee (Top Lid)
<b>SIT</b>	Sharp Tee (Inside Lid)
<b>SOT</b>	Sharp Tee (Outside Lid)
<b>ITB</b>	Intersection Box
<b>TE</b>	45° Elbow (Top Lid)
<b>IE</b>	45° Elbow (Inside Lid)
<b>OE</b>	45° Elbow (Outside Lid)
<b>RE</b>	Reducer
<b>FF</b>	Flared Flange
<b>BE</b>	Blank End
<b>FB</b>	Fire Barrier Clip
<b>LCS</b>	Lid Clips (Strap and Stud)
<b>FC</b>	Flanged Coupling
<b>CS</b>	Cable Support
<b>CES</b>	Earth Link (Copper) x 10
<b>TCES</b>	Earth Link (Tinned Copper) x 10
<b>CR</b>	Cable Retainer Strap x 10
<b>STLI</b>	Socket Outlet (Single)
<b>STL2</b>	Socket Outlet (Double)
<b>PES</b>	PVC Edging Strip - per metre

## STEP 3: CHOOSE SIZE

WIDTH	HEIGHT	SIZE CODE	NO OF COMPARTMENTS POSSIBLE		
			X2	X3	X4
50	50	<b>22</b>	✓		
75	50	<b>32</b>	✓		
75	75	<b>33</b>	✓		
100	50	<b>42</b>	✓	✓	
100	75	<b>43</b>	✓	✓	
100	100	<b>44</b>	✓	✓	
150	50	<b>62</b>	✓	✓	✓
150	75	<b>63</b>	✓	✓	✓
150	100	<b>64</b>	✓	✓	✓
150	150	<b>66</b>	✓	✓	✓
200	50	<b>82</b>	✓	✓	✓
200	75	<b>83</b>	✓	✓	✓
200	100	<b>84</b>	✓	✓	✓
200	150	<b>86</b>	✓	✓	✓
200	200	<b>88</b>	✓	✓	✓
225	50	<b>92</b>	✓	✓	✓
225	75	<b>93</b>	✓	✓	✓
225	100	<b>94</b>	✓	✓	✓
225	150	<b>96</b>	✓	✓	✓
225	225	<b>99</b>	✓	✓	✓
300	50	<b>12X2</b>	✓	✓	✓
300	75	<b>12X3</b>	✓	✓	✓
300	100	<b>12X4</b>	✓	✓	✓
300	150	<b>12X6</b>	✓	✓	✓
300	200	<b>12X8</b>	✓	✓	✓
300	225	<b>12X9</b>	✓	✓	✓
300	300	<b>12X12</b>	✓	✓	✓

## STEP 5: GAUGE

Gauges conform to latest specifications. For specialist requirements a range of gauges are available on request.

## Need something special or can't find what you're looking for?

If you need specialist or bespoke products or you can't find the product specification you need, just call one of our regional offices or visit our website.

email: [bespoke@unitrunk.co.uk](mailto:bespoke@unitrunk.co.uk) 43

visit online: uk [unitrunk.co.uk](http://unitrunk.co.uk) ireland [unitrunk.ie](http://unitrunk.ie)






# UNITRUNK CASE STUDY



# HEALTHCARE



Having worked with Unitrunk in the past, we knew they were the only manufacturer who could meet our needs on a project of this size. 

Gavin Hanlon, Mercury Engineering

It's great to know you are trusted. So we were delighted when our services were called upon to develop Scotland's biggest ever hospital project.

A new 'super' laboratory, which covers 25,000 square meters, has just been completed at the site of Glasgow's Southern General hospital and will serve the whole of Glasgow's south-side.

The lab is just one part of the £842 million project which will see an integrated children and adults' hospital built on the site of the current Southern General.



## PRODUCTS

- Standard Trunking
- Cable Tray
- Speedway SW4 Cable Ladder
- Support Channel & Bracketry