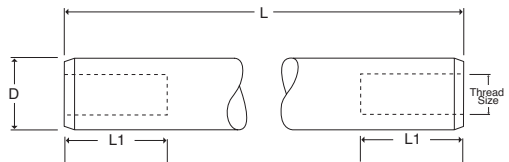


### Tinned Solid Copper Earth Rods

The tinned solid copper earth rods are designed for use where extremely high corrosion resistance and exceptionally long life are required. Tinned solid copper earth rods are produced from solid copper bar and are internally threaded for jointing. When deep driving a tinned solid copper earth rod the usual practice is to insert the rod into a bore hole and backfill with either Low-Resistance Earthing Compound or Bentonite

Shank D mm	L mm	Thread Size	L1 mm	Unit Weight kg	Pack Quantity	Part Number
15	1200	M10	20	1.88	5	ERC 112T
	1500			2.66		ERC 115T
16	1800	M10	20	3.20	5	ERC 118T
	2400			4.28		ERC 124T
	3000			5.36		ERC 130T
20	1200	M10	20	3.34	5	ERC 212T
	1500			4.18		ERC 215T
	1800			5.03		ERC 218T
	2400			6.71		ERC 224T
	2500			7.00		ERC 225T
	3000			8.40		ERC 230T
25	1000	M12	25	4.37	1	ERC 310T
	1200			5.23		ERC 312T
	1500			6.54		ERC 315T
	1800			7.86		ERC 318T
	2000			8.73		ERC 320T
	2400			10.50		ERC 324T
	2500			10.90		ERC 325T
	3000			13.10		ERC 330T
	3600			15.90		ERC 336T

Material: Copper to BS EN 13601.

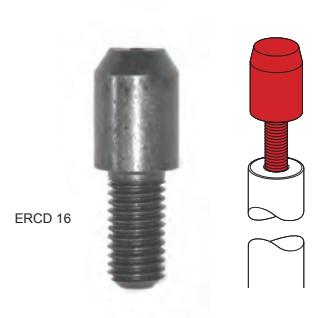
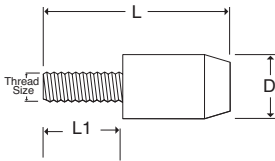


### Driving Heads

The driving head protects the internal thread and the top of the tinned solid copper earth rods from damage when being driven into the ground.

D mm	L mm	Thread Size	L1 mm	Unit Weight kg	Pack Quantity	Part Number
16	38	M10	20	0.03	25	ERCD 16
20	41	M10	20	0.06		ERCD 20
25	45	M12	25	0.10		ERCD 25

Material: Steel.



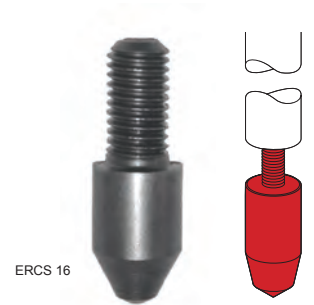
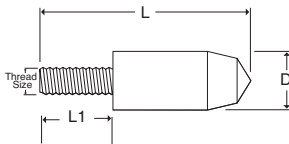
ERCD 16

### Driving Spikes

These driving spikes enable tinned solid copper earth rods to be driven easily into the ground.

D mm	L mm	Thread Size	L1 mm	Unit Weight kg	Pack Quantity	Part Number
16	42	M10	20	0.03	25	ERCS 16
20	51	M10	20	0.06		ERCS 20
25	60	M12	25	0.10		ERCS 25

Material: Steel.



ERCS 16

### Coupling Dowels

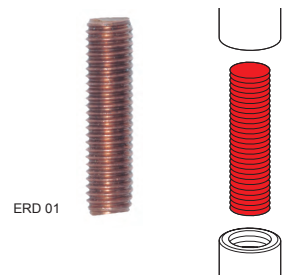
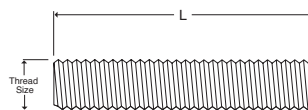
The phosphor bronze coupling dowel is used for joining tinned solid copper earth rods together.

Thread Size	L mm	Unit Weight kg	Pack Quantity	Part Number
M10	40	0.02	25	ERD 01
M12	50	0.04		ERD 02

Material: Phosphor Bronze



BS EN 62561-1 Class H



ERD 01