

SECTION 4

CABLE TRAY SYSTEMS

UNITRUNK'S LATEST INNOVATION...

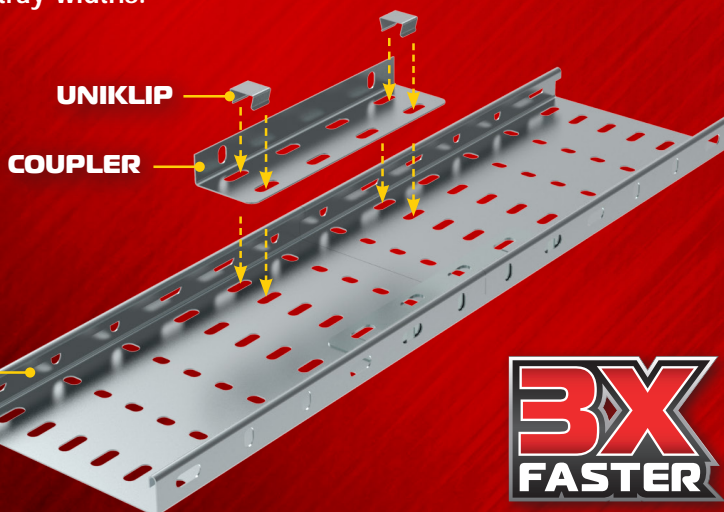
Uniklip is our patented fast fitting solution for Cable Tray Installation. Based on the same reliable strength and quality of Unitrunk, Uniklip has been engineered with enhanced speed of installation and ease of use to provide a commercial advantage in a market where efficiency of time is imperative.

Considerable investment in research and development, testing and state of the art computerised machinery has developed a revolutionary solution to fast cable tray installation and a production facility capable of responding quickly to the needs of the market.

Unitrunk's Uniklip System for Cable Tray includes light, medium and heavy duty profile with Klip perforations (also compatible with traditional means of install if required). Uniklip range is produced in pre-galvanised mild steel to BS EN 10346:2009.

All our trays conform to BS 61537:2007 and tested in accordance with BS EN 61537. Earth continuity compliant in accordance with the requirements of BS EN 61537.

Uniklip works up to and including size 600mm tray widths.



ACCREDITED TO THE FOLLOWING STANDARDS

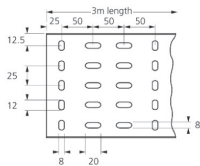


THAN YOUR STANDARD
INSTALLATION

Light Duty Cable Tray (in accordance with BS 61537:2007)

All light duty tray lengths up to and including KLLD225T come complete with swaged end for ease of coupling and to eliminate the need for couplers). KLLD300T and above require the use of couplers. A range of gauges are available on request.

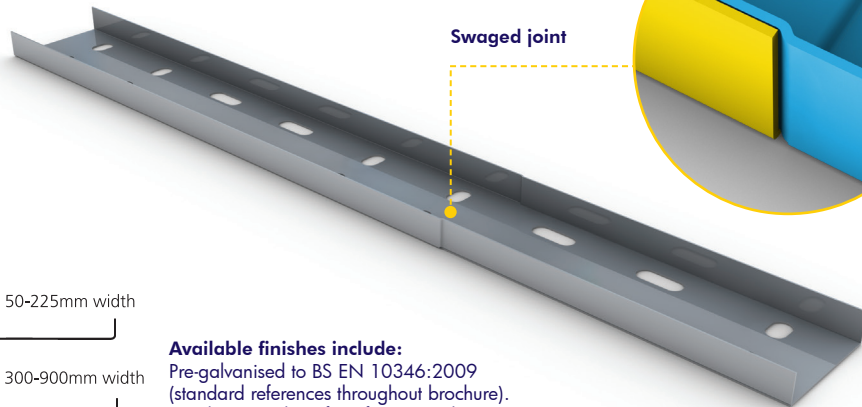
Ref.	Tray Width mm
KLLD50T	50
KLLD75T	75
KLLD100T	100
KLLD150T	150
KLLD225T	225
KLLD300T	300
KLLD450T	450
KLLD600T	600



13.5mm on 50-225mm width

21.5mm on 300-900mm width

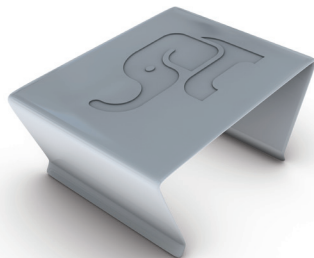
Available finishes include:
Pre-galvanised to BS EN 10346:2009
(standard references throughout brochure).
Powder coated (Prefix reference with CP).



UNIKLIP

Bag Ref. KLIPPKT
Box Ref. KLIPBOX

Available in bags of 40
or boxes of 200.

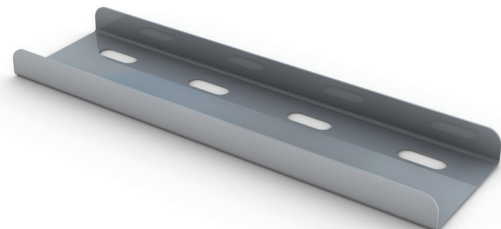


Uniklip is supplied with fittings and couplers.

Fish Plate Coupler

Ref. KLLD/FPC 50-600

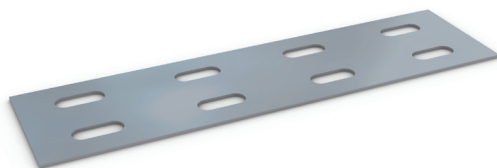
Length 200mm.



Fish Plate

Ref. FP 150-600

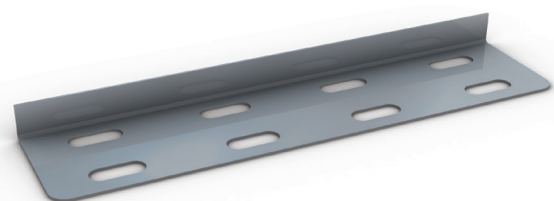
Length =200mm.



Straight Coupler

Ref. KLLD/SC

Length 200mm.
Sold in pairs.

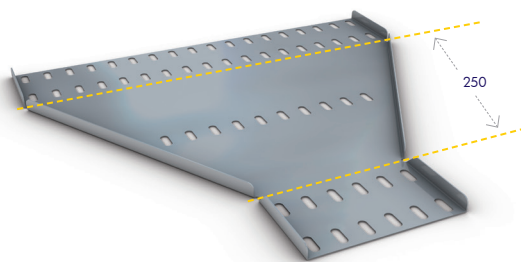


Reducer

Ref. KLLD/SR

Assembly space = 250mm.

Please state sizes required.

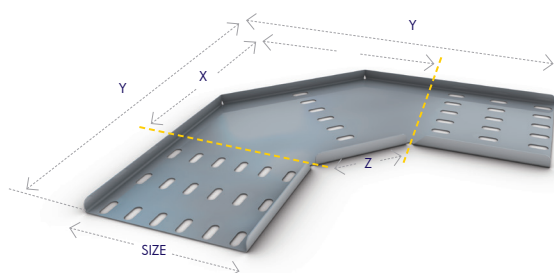


Flat 90° Bend

Ref. KLLD 50 - 600FB90

Size	50	75	100	150	225	300	450	600
X	125	150	175	225	300	400	550	700
Y	213	238	263	313	388	488	638	788
Z	106	106	106	106	106	142	142	142
R	75	75	75	75	75	100	100	100

R: Radius

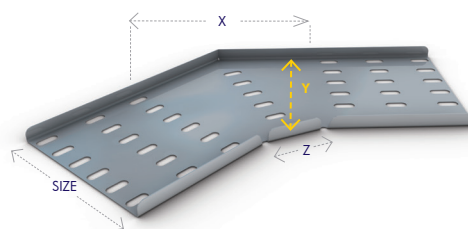


Flat 45° Bend

Ref. KLLD 50 - 600FB45

Size	50	75	100	150	225	300	450	600
X	88	106	124	159	212	283	389	495
Y	72	97	122	172	247	329	479	629
Z	58	58	58	58	58	77	77	77
R	75	75	75	75	75	100	100	100

R: Radius

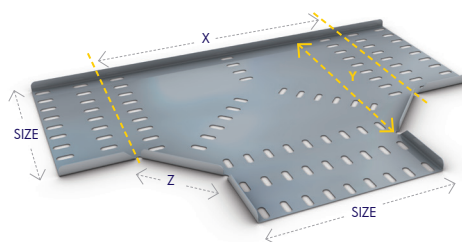


Flat Equal Tee

Ref. KLLD 50 - 600ET

Size	50	75	100	150	225	300	450	600
X	196	221	246	296	371	446	596	746
Y	123	148	173	223	298	373	523	673
Z	106	106	106	106	106	106	106	106
R	75	75	75	75	75	75	75	75

R: Radius

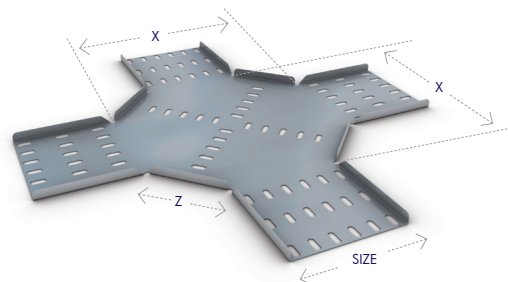


Flat 4 Way Equal Intersection

Ref. KLLD 50 - 600FW

Size	50	75	100	150	225	300	450	600
X	200	225	250	300	375	450	600	750
Z	106	106	106	106	106	106	106	106
R	75	75	75	75	75	75	75	75

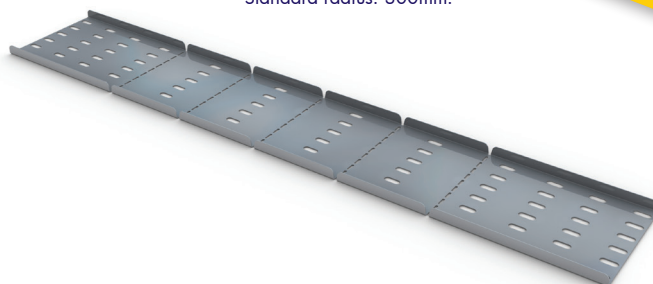
R: Radius



Variable Riser

Ref.	Tray Width mm
KLLD50VR	50
KLLD75VR	75
KLLD100VR	100
KLLD150VR	150
KLLD225VR	225
KLLD300VR	300
KLLD450VR	450

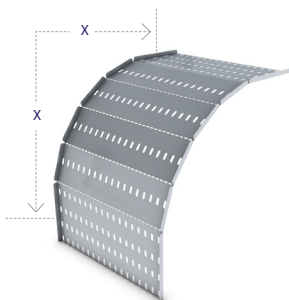
Standard radius: 300mm.



Outside Riser

Ref. KLLD 600ER

Size	600
X	314



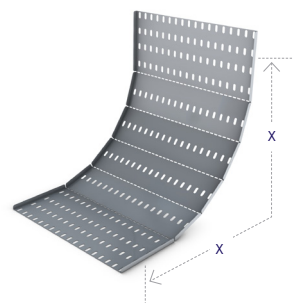
Standard radius: 300mm.

600 will be supplied formed 90 degrees

Inside Riser

Ref. KLLD 600IR

Size	600
X	300



Standard radius: 300mm.

600 will be supplied formed 90 degrees

DISCOVER WHAT 3X FASTER LOOKS LIKE

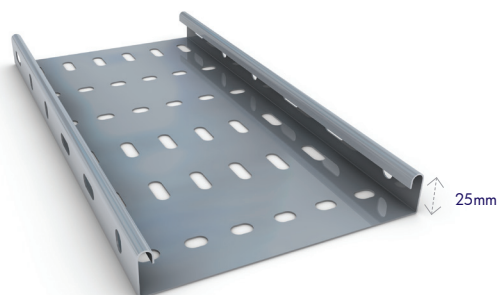


visit: **unitrunk.co.uk** to watch Uniklip vs. a standard system in the Cheetah Challenge

Medium Duty Cable Tray (in accordance with BS 61537:2007)

Ref.	Tray Width mm
KLMR50T	50
KLMR75T	75
KLMR100T	100
KLMR150T	150
KLMR225T	225
KLMR300T	300
KLMR450T	450
KLMR600T	600

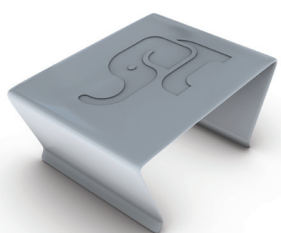
Available finishes include:
Pre-galvanised to BS EN 10346:2009
(standard references throughout brochure).
Powder coated (prefix reference with CP).



UNIKLIP

Bag Ref. KLIPPKT
Box Ref. KLIPBOX

Available in bags of 40
or boxes of 200.



Uniklip is supplied with fittings and couplers.

Tray Divider

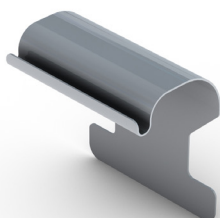
Ref. KLMR/DF

Length = 3000mm.



Tray to Channel Klip

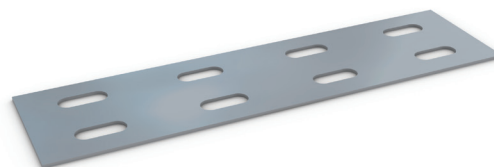
Ref. CHTR 25



Fish Plate

Ref. FP 150-600mm

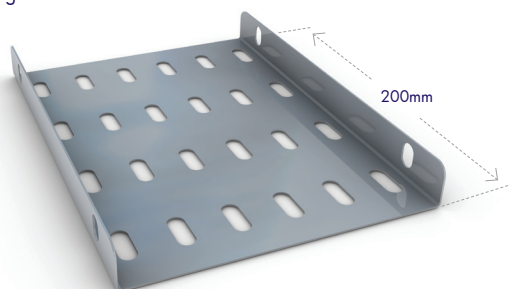
Length 200mm.



Fish Plate Coupler

Ref. KLMR/FPC 50-600

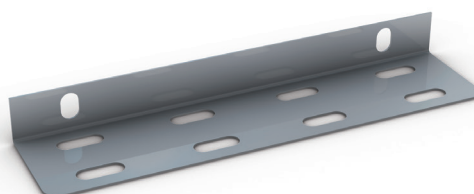
Length 200mm.



Straight Coupler

Ref. KLMR/SC

Length 200mm.
Sold in pairs.



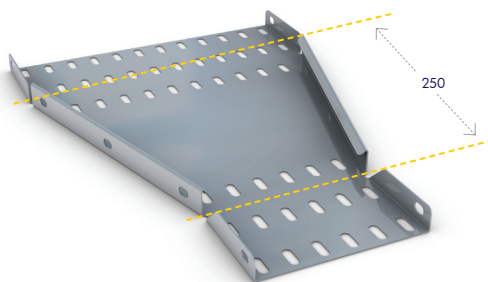
MEDIUM DUTY CABLE TRAY SYSTEMS

Reducer

Ref. KLMR/SR

Assembly space = 250mm.

Please state sizes required.



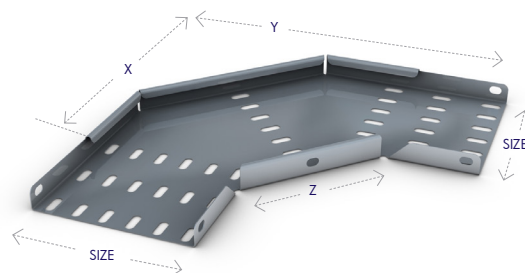
Flat 90° Bend

Ref. KLMR 50 - 600FB90

Size	50	75	100	150	225	300	450	600
X	125	150	175	225	300	400	550	700
Y	213	238	263	313	388	488	638	788
Z	106	106	106	106	106	142	142	142
R	75	75	75	75	75	100	100	100

(Fitting widths W. Sizes in mm)

R: Radius



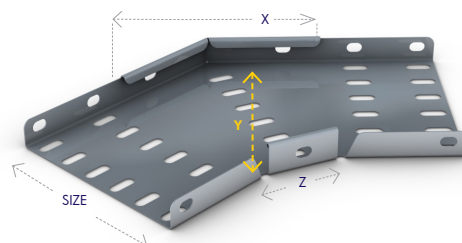
Flat 45° Bend

Ref. KLMR 50 - 600FB45

Size	50	75	100	150	225	300	450	600
X	88	106	124	159	212	283	389	495
Y	72	97	122	172	247	329	479	629
Z	58	58	58	58	58	77	77	77
R	75	75	75	75	75	100	100	100

(Fitting widths W. Sizes in mm)

R: Radius

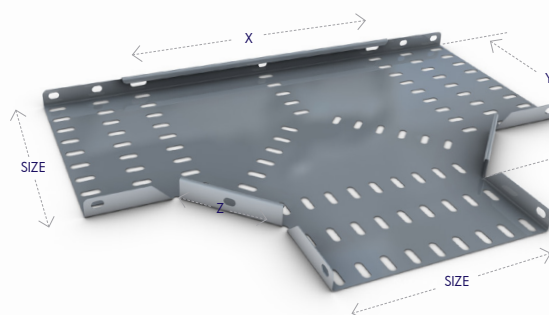


Flat Equal Tee

Ref. KLMR 50 - 600ET

Size	50	75	100	150	225	300	450	600
X	196	221	246	296	371	446	596	746
Y	123	148	173	223	298	373	523	673
Z	106	106	106	106	106	106	106	106
R	75	75	75	75	75	75	75	75

R: Radius

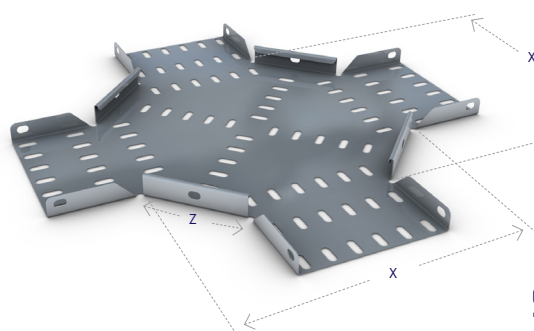


Flat 4 Way Equal Intersection

Ref. KLMR 50 - 600FW

Size	50	75	100	150	225	300	450	600
X	200	225	250	300	375	450	600	750
Z	106	106	106	106	106	106	106	106
R	75	75	75	75	75	75	75	75

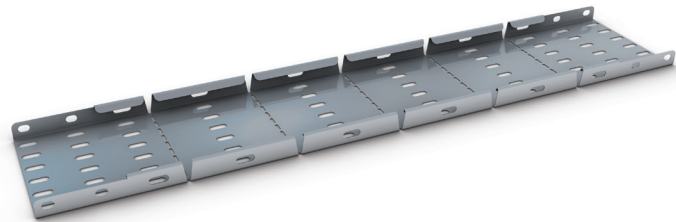
R: Radius



Variable Riser

Ref.	Tray Width mm
KLMR50VR	50
KLMR75VR	75
KLMR100VR	100
KLMR150VR	150
KLMR225VR	225
KLMR300VR	300
KLMR450VR	450

(Fitting widths W. Sizes in mm)
Standard radius: 300mm.



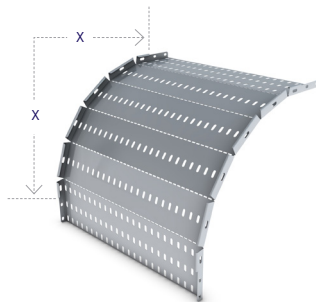
Outside Riser

Ref. KLMR 600ER

Size	600
X	326

Standard radius: 300mm.

600 will be supplied formed 90 degrees



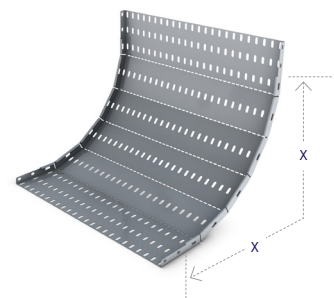
Inside Riser

Ref. KLMR 600IR

Size	600
X	300

Standard radius: 300mm.

600 will be supplied formed 90 degrees

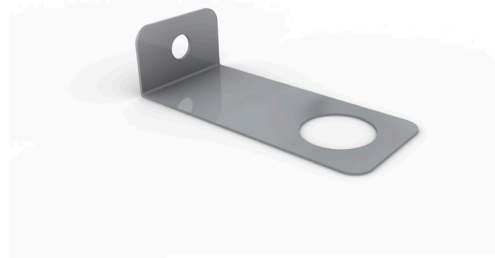


Conduit Take-off Plate

Ref. TRCB20 (20mm)

Ref. TRCB25 (25mm)

Suitable For Light/Medium/Heavy.

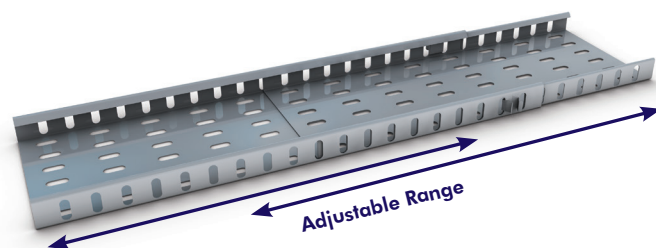


Adjustable Tray Extension

Ref. KLMRATE

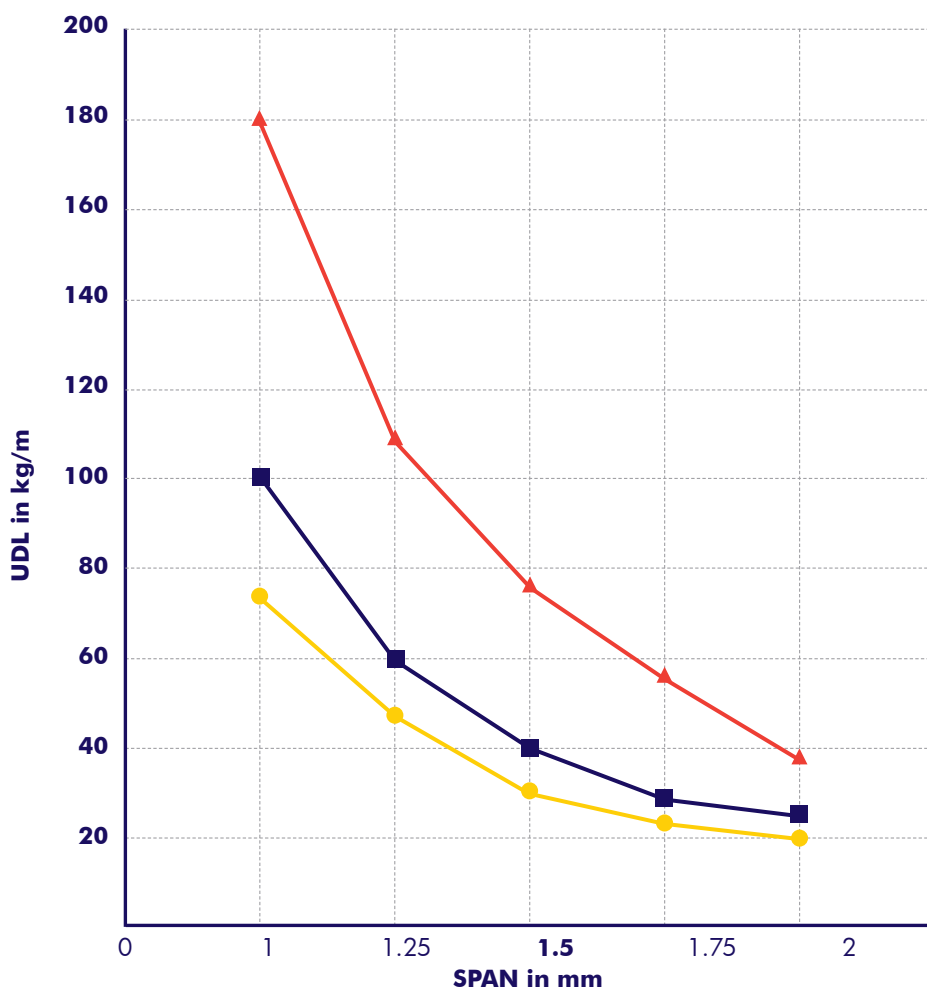
Size	Adjustable length ranges		
50	300 - 450	500 - 800	750 - 1200
75	300 - 450	500 - 800	750 - 1200
100	300 - 450	500 - 800	750 - 1200
150	300 - 450	500 - 800	750 - 1200
225	300 - 450	500 - 800	750 - 1200
300	300 - 450	500 - 800	750 - 1200
450	300 - 450	500 - 800	750 - 1200
600	300 - 450	500 - 800	750 - 1200

Made to order item. Other lengths available on request.



LOADING DATA FOR ALL UNITRUNK MR CABLE TRAY SYSTEMS

Unitrunk MR



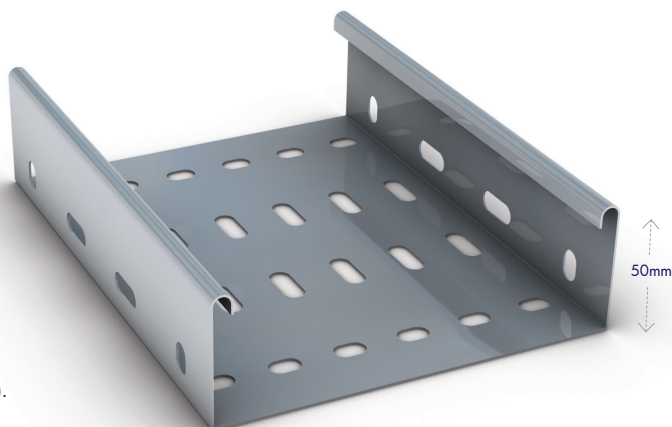
Key

- 50 - 150
- 225 - 300
- ▲— 450 - 900

Heavy Duty Cable Tray (in accordance with BS 61537:2007)

Ref.	Tray Width mm
KLHR50T	50
KLHR75T	75
KLHR100T	100
KLHR150T	150
KLHR225T	225
KLHR300T	300
KLHR450T	450
KLHR600T	600

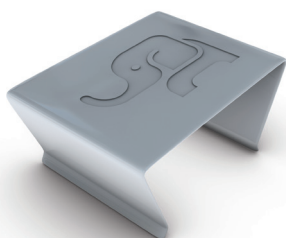
Available finishes include:
Pre-galvanised to BS EN 10346:2009
(standard references throughout brochure).
Powder coated (prefix reference with CP).



UNIKLIP

Bag Ref. KLIPPKT
Box Ref. KLIPBOX

Available in bags of 40
or boxes of 200.

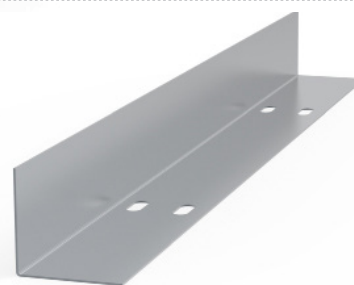


Uniklip is supplied with fittings and couplers.

Tray Divider

Ref. KLHR/DF

Length = 3000mm.



Tray to Channel Klip

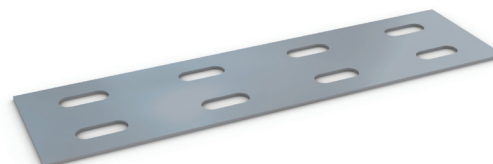
Ref. CHTR 50



Fish Plate

Ref. FP 150-600

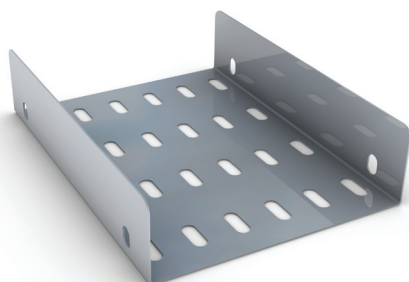
Length = 200mm.



Fish Plate Coupler

Ref. KLHR/FPC 50-600

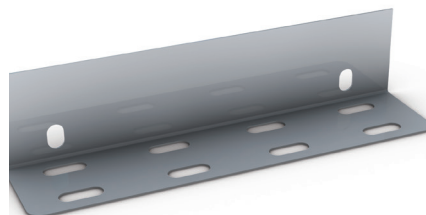
Length = 200mm.



Straight Coupler

Ref. KLHR/SC

Length = 200mm.
Sold in pairs.



HEAVY DUTY CABLE TRAY SYSTEMS

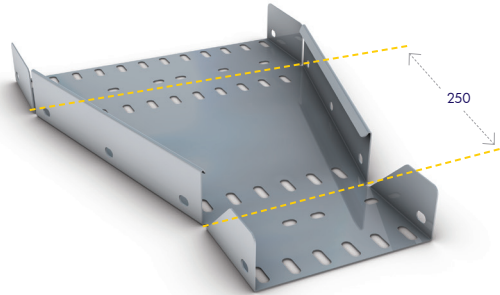
04

Reducer

Ref. KLHR/SR

Assembly space = 250mm.

Please state sizes required.

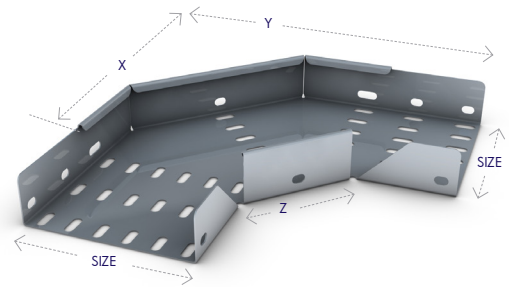


Flat 90° Bend

Ref. KLHR 50-600FB90

Size	50	75	100	150	225	300	450	600
X	125	150	175	225	300	400	550	700
Y	213	238	263	313	388	488	638	788
Z	106	106	106	106	106	142	142	142
R	75	75	75	75	75	100	100	100

R: Radius

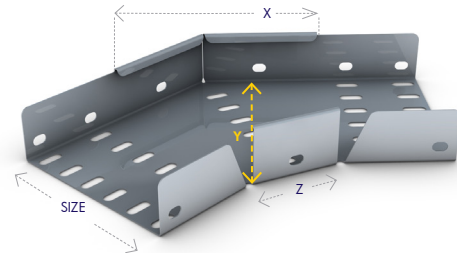


Flat 45° Bend

Ref. KLHR 50-600FB45

Size	50	75	100	150	225	300	450	600
X	88	106	124	159	212	283	389	495
Y	72	97	122	172	247	329	479	629
Z	58	58	58	58	58	77	77	77
R	75	75	75	75	75	100	100	100

R: Radius

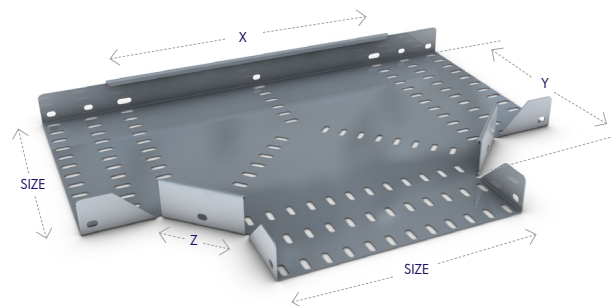


Flat Equal Tee

Ref. KLHR 50-600ET

Size	50	75	100	150	225	300	450	600
X	196	221	246	296	371	446	596	746
Y	123	148	173	223	298	373	523	673
Z	106	106	106	106	106	106	106	106
R	75	75	75	75	75	75	75	75

R: Radius

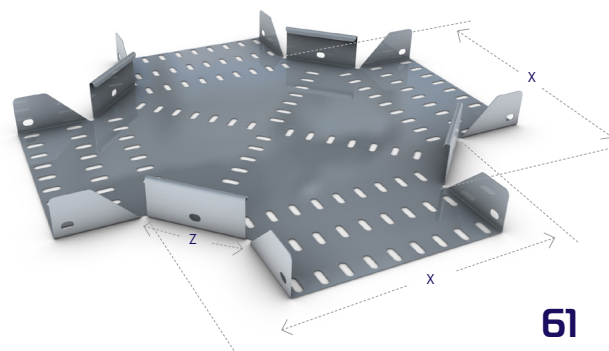


Flat 4 Way Equal Intersection

Ref. KLHR 50-600FW

Size	50	75	100	150	225	300	450	600
X	200	225	250	300	375	450	600	750
Z	106	106	106	106	106	106	106	106
R	75	75	75	75	75	75	75	75

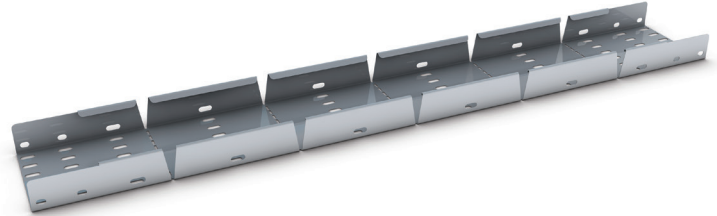
R: Radius



Variable Riser

Ref.	Tray Width mm
KLHR50VR	50
KLHR75VR	75
KLHR100VR	100
KLHR150VR	150
KLHR225VR	225
KLHR300VR	300
KLHR450VR	450

(Fitting widths W. Sizes in mm)
Standard radius: 300mm.



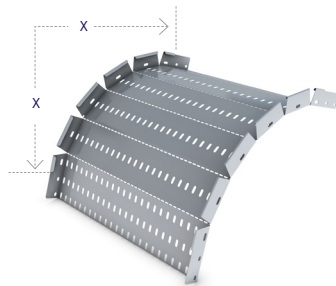
Outside Riser

Ref. KLHR 600ER

Size	600
X	350

Standard radius: 300mm.

600 will be supplied formed 90 degrees



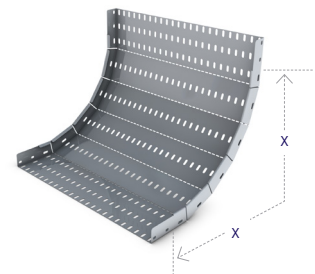
Inside Riser

Ref. KLHR 600IR

Size	600
X	300

Standard radius: 300mm.

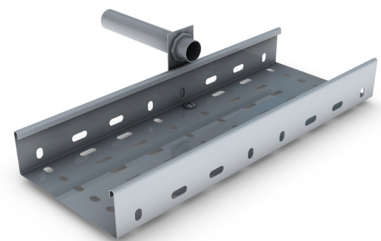
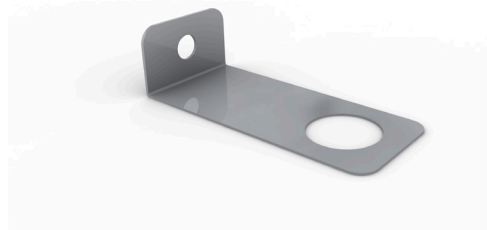
600 will be supplied formed 90 degrees



Conduit Take-off Plate

Ref. TRCB20 (20mm)
Ref. TRCB25 (25mm)

Suitable For Light/Medium/Heavy.

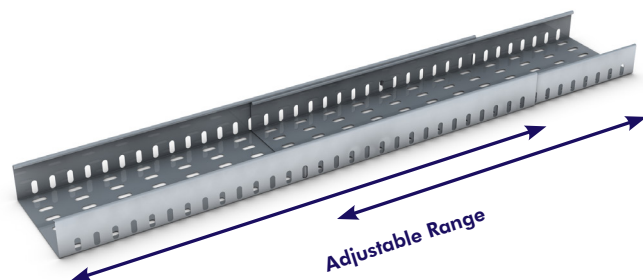


Adjustable Tray Extension

Ref. KLHRAE

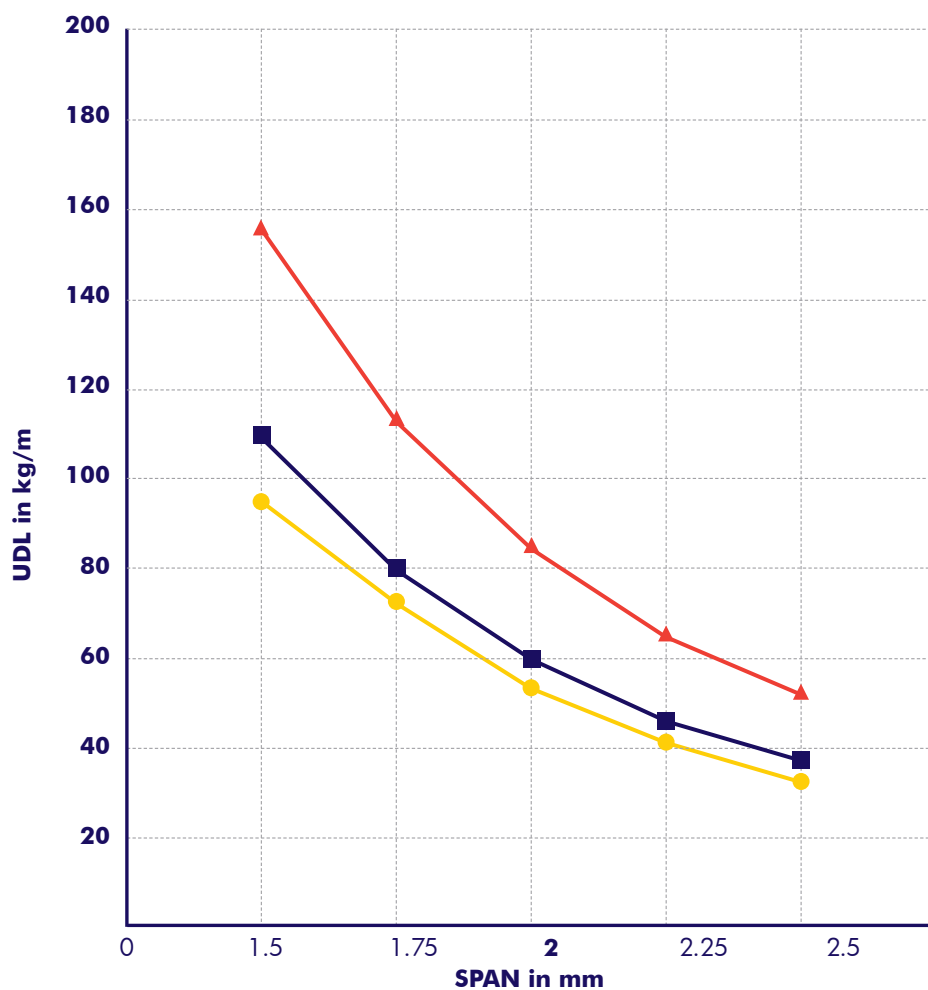
Size	Adjustable length ranges		
50	300 - 450	500 - 800	750 - 1200
75	300 - 450	500 - 800	750 - 1200
100	300 - 450	500 - 800	750 - 1200
150	300 - 450	500 - 800	750 - 1200
225	300 - 450	500 - 800	750 - 1200
300	300 - 450	500 - 800	750 - 1200
450	300 - 450	500 - 800	750 - 1200
600	300 - 450	500 - 800	750 - 1200

Made to order. Other lengths available on request.



LOADING DATA FOR ALL UNITRUNK HR CABLE TRAY SYSTEMS

Unitrunk HR



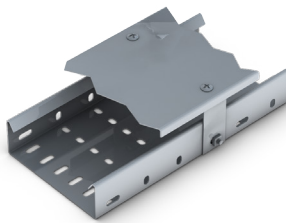
Key

- 50 - 150
- 225 - 300
- ▲— 450 - 900

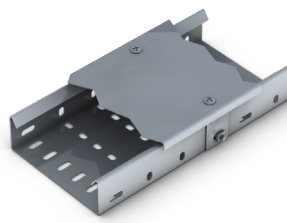
COVERS & BRACKETS

The Unitrunk cable tray range is complimented by an extensive range of covers. Covers are available to suit the Unitrunk medium duty and Unitrunk heavy duty cable tray systems. Covers are used with cable tray to provide mechanical and environmental protection for cables and other items installed on the cable tray. Covers can be installed as either closed (non-ventilated, close-fitting) or ventilated (plain raised cover) depending on the type of cover fixing kit supplied with each cover.

Covers for straight cable tray are available in non-standard gauges to suit particular site installation requirements, consult our Sales Team for details. Ventilated covers for Unitrunk medium duty return flange cable tray have a ventilation gap of 21mm. Ventilated covers for Unitrunk heavy duty return flange cable tray have a ventilation gap of 24mm.

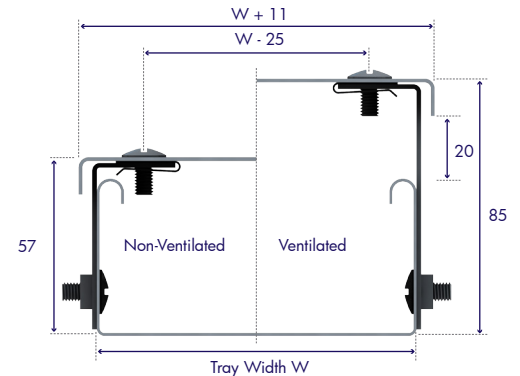


Straight Cable Tray
Ventilated (Raised) Cover

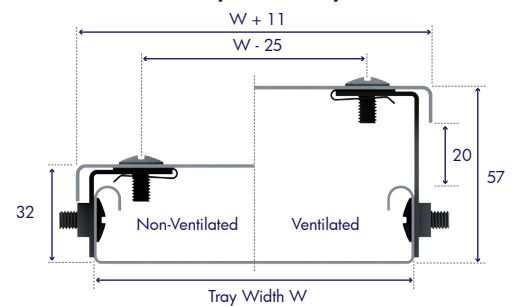


Straight Cable Tray Closed
(Non-Ventilated) Cover

Heavy Duty Cable Tray Covers



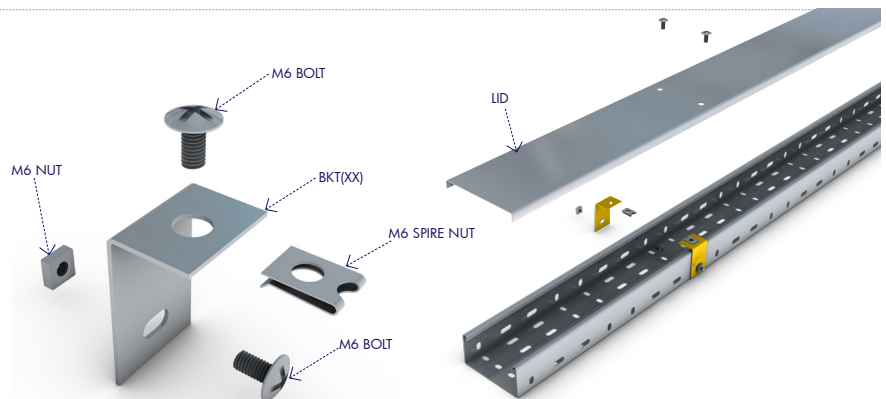
Medium Duty Cable Tray Covers



Cover Fixing Kits

Unitrunk cable tray covers are supplied complete kits with all necessary fixings. Each fixing kit comprises of a component lid, preformed mounting bracket, a corrosion resistant M6 spire nut, two M6 screws and one M6 nut.

The general method of assembly for the Unitrunk cable tray cover is as shown. This method is common to both medium and heavy duty cable trays and to cable tray fittings.



COVER KIT CODE GUIDE

STEP 1 : CHOOSE PRODUCT FINISH



PRE-GALVANISED *has no code prefix

STEP 2: VENTILATION

CODE	COVER TYPE
UC	Unventilated Cover
VC	Ventilated Cover

STEP 3: TRAY SIDE WALL

CODE	SIDEWALL HEIGHT
MR	Medium Duty
HR	Heavy Duty

STEP 4: TRAY WIDTH

CODE	TRAY WIDTH
50	50mm Wide
75	75mm Wide
100	100mm Wide
150	150mm Wide
225	225mm Wide
300	300mm Wide
450	450mm Wide
600	600mm Wide

STEP 5: PRODUCT TYPE

CODE	PRODUCT TYPE
T	Cable Tray
FB90	Flat Bend 90 Degrees
FB45	Flat Bend 45 Degrees
ET	Equal Tee
FW	Fourway Intersection
ER90	External Riser 90 Deg
IR90	Internal Riser 90 Deg
ER45	External Riser 45 Deg
IR45	Internal Riser 45 Deg

EXAMPLE ORDERING:

PREGALV UNVENTILATED MEDIUM DUTY 100MM WIDE EQUAL TEE = UCMR100ET

If you need specialist or bespoke products or you can't find the product specification you need, just call one of our regional offices or visit our website.

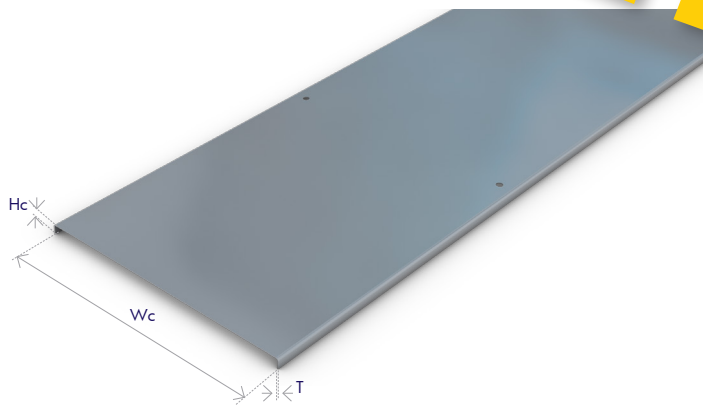
Straight Tray Covers

Unitrunk straight tray covers are 3m in length and are available in widths of 50mm to 900mm as standard. Covers are common for both closed and ventilated applications.

Straight Tray Covers - Dimensions & Weights

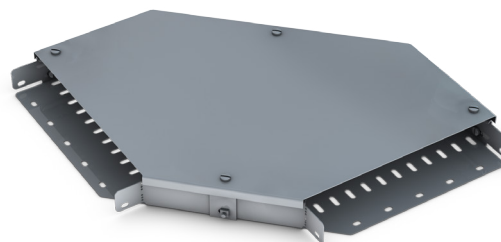
Ref.	Tray Width (mm)	Cover Width WC (mm)	Height HC (mm)	Weight (kg)
CR50T	50	61	11.9	2.51
CR75T	75	86	11.9	3.17
CR100T	100	111	11.9	3.92
CR150T	150	161	11.9	5.43
CR225T	225	236	11.9	7.70
CR300T	300	311	12.2	9.96
CR450T	450	461	12.5	18.13
CR600T	600	611	12.5	23.78
CR750T	750	761	12.5	29.47
CR900T	900	911	12.5	35.12

Weights shown are for standard pre-galvanised finish.



Cable Tray Fitting Covers

Unitrunk cable tray fitting covers are available in widths of 50mm to 900mm as standard. Covers are common for both closed and ventilated applications.



Cover Fixing Brackets

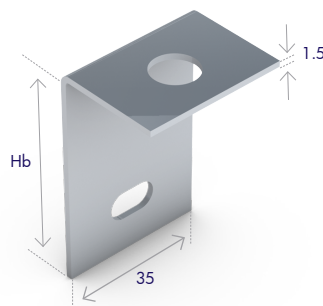
Covers for straight cable tray and cable tray fittings are supplied with the appropriate number of cover fixing kits as follows:

Cover Fixing Kit Requirements

Tray & Fitting Type	Width (mm)		
	50-150	225-450	600-900
Straight Tray	6	6	6
90° Flat Elbows	3	4	6
60° Flat Elbows	3	4	6
45° Flat Elbows	3	3	3
30° Flat Elbows	3	3	3
Inside Risers	4	4	4
Outside Risers	4	4	4
Equal Tees	3	4	5
Unequal Tees*	3	4	5
Equal Crosses	4	4	4
Reducers	4	4	4

*Based on largest branch size

Each cover fixing kit is supplied with the appropriate cover mounting bracket for either a non-ventilated cover or ventilated cover based on the part number ordered. (For dimensions of the cover mounting brackets please see table).



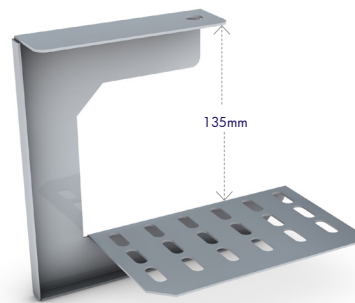
Cover Fixing Brackets - Dimensions

Ref.	Cover Type	Bracket Height Hb mm
BKT28	Medium duty closed covers	28
BKT53	Medium duty ventilated covers	53
BKT53	Heavy duty closed covers	53
BKT78	Heavy duty ventilated covers	78

Tray Overhead Hangers

Ref. OH50-OH300

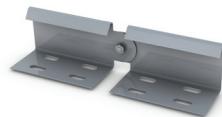
Suitable for Light/Medium/Heavy Duty Cable Tray.
50mm to 300mm Tray Width.



Vertical Adjustable Coupler

Medium Ref. KLMRVAC
Heavy Ref. KLHRVAC

Sold in pairs to suit MR and HR Tray.

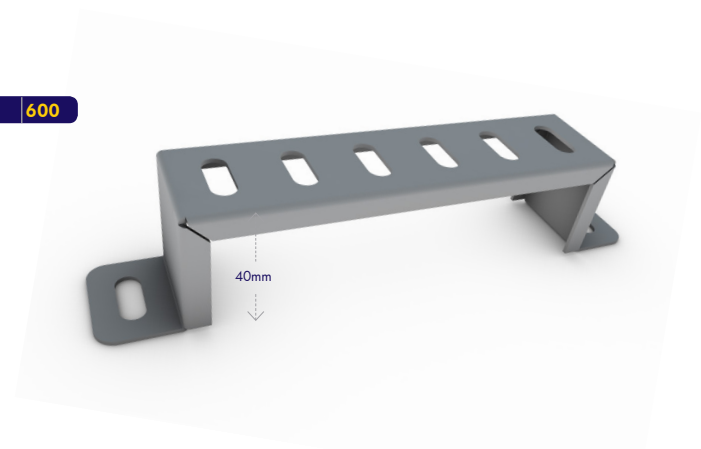


Stand-off Bracket

Ref. SOB50-SOB600

Size	50	75	100	150	225	300	450	600

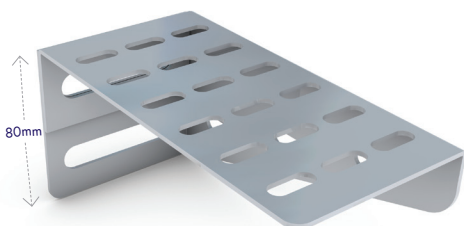
Available finishes include: Pre-galvanised to BS EN 10346:2009 (standard references throughout brochure).
Powder coated (prefix reference with CP).



Cantilever Arm

Ref. KLCARM

Size	100	150	225	300	450

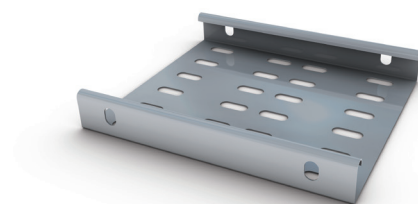


Fitting to Fitting Adapter

Ref. KLLDFFA, Ref. KLMRFFA, Ref. KLHRFFA

Size	50	75	100	150	225	300	450	600

Used to connect one cable tray fitting directly onto another cable tray fitting.



CABLE TRAY SYSTEM FINISHES

(EXCLUDING RIS UNIKLIP SYSTEM)

Galvanised After: Products to this finish are manufactured from mild steel and galvanised after manufacture in accordance with BS EN 1461. These products achieve a thicker coating of zinc which enhances the products resistance to corrosion. Products to this finish are suitable for outdoor installations.



Stainless Steel: Used for products to be installed in the harshest of environments and in various process facilities. Unitrunk offers two grades of stainless steel material.

304: Used extensively throughout the industry. This is a tough, corrosion resistant austenitic grade of stainless steel which is popular in the food and pharmaceutical process industries. Unitrunk cable trunkings are as standard supplied in this grade of material.



316: Also referred to as Marine Grade. This austenitic grade of stainless steel through the addition of molybdenum is used mainly for installations which are exposed to high saline content environments such as offshore facilities and coastal environments. Our cable ladders, cable trays and support channels are supplied as standard in this grade of material. These two grades of stainless steel are to BS EN 10088-2:2005.



Powder Coated (Multicoloured): The painted finish is achieved by powder coating the base steel. This process is achieved by electrostatically charging the base material and then applying a free flowing, dry coloured powder to it. Heat is then applied to allow it to flow and form a "skin". The powder coated finish is very tough and durable providing relatively good corrosion protection. It can be applied to any type of steel finish, including post-galvanised.



Galvanised After Manufacture Corten A Steel: This material is used for products to be installed in environments where high levels of humidity and/or where corrosive substances are present. The high silicon content of Corten A substantially increases the zinc coating thickness which adheres to the surface of the steel thereby extending the life cycle of the installation. The typical zinc coating thickness achieved on 2.0mm mild steel, in accordance with BS EN 1461, is 55µ (microns) whereas 2.0mm Corten A steel can comfortably achieve a coating thickness of 140µ, more than doubling the time to first maintenance.



Pre-Galvanised 750 + 900: Mild steel material to BS EN 10346:2009, pre-coated at the steel manufacturers. Good resistance to rust in a dry, indoor environment. Not recommended for humid or outdoor installations.



Standard
Trunking

Multi
Compartment
Trunking

Lighting
Trunking

Uniklip
Cable Tray

Speedway
Cable Ladder

Cable Basket
Systems

Channel &
Support

Floor
Trunking

Bench Outlet
& Perimeter
Trunking

Steel Conduit
(Class 4)

Innovative
Design
Solutions

Accessories
& Supports

Index