

## PRE-PRINTED AND WRITE-ON MARKERS

Panduit offers a variety of pre-printed and write-on marker solutions in multiple formats to meet your specific requirements.



- Marker books are a convenient pocket-sized method to identify many electrical and network components
- Marker cards are available in a variety of legends and combination packs
- Dispensers are available in both pre-printed and write-on formats for quick identification of wire/cable
- Clip-on markers provide a fast, convenient, non-adhesive method to identify wire/cable

Panduit offers a variety of innovative books, cards, clip-ons and dispensers to provide you with the wire/cable label that best fits your needs.

A.  
System  
Overview

B1.  
Cable Ties

B2.  
Cable  
Accessories

B3.  
Stainless  
Steel Ties

C1.  
Wiring  
Duct

C2.  
Surface  
Raceway

C3.  
Abrasion  
Protection

C4.  
Cable  
Management

D1.  
Terminals

D2.  
Power  
Connectors

D3.  
Grounding  
Connectors

E1.  
Labeling  
Systems

E2.  
Labels

E3.  
Pre-Printed  
& Write-On  
Markers

E4.  
Permanent  
Identification

E5.  
Lockout/  
Tagout/  
& Safety  
Solutions

F.  
Index

A. System Overview

## Pre-Printed Marker Books

B1. Cable Ties

- Convenient, pocket-sized book
- Markers are perforated and can be torn in half to mark both ends of conductors

- Terminal block markers are included to properly identify connectors
- Ten pages of markers per book

B2. Cable Accessories

B3. Stainless Steel Ties

C1. Wiring Duct

C2. Surface Raceway

C3. Abrasion Protection

C4. Cable Management

D1. Terminals

D2. Power Connectors

D3. Grounding Connectors

E1. Labeling Systems

E2. Labels

E3. Pre-Printed & Write-On Markers

E4. Permanent Identification

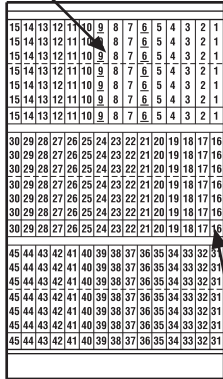
E5. Lockout/Tagout & Safety Solutions

F. Index

### Material Chart

| Material           | Print Method | Temperature Range              | Features   |
|--------------------|--------------|--------------------------------|--|
| Vinyl Cloth, White | Pre-Printed  | -50°F to 170°F (-46°C to 77°C) | Indoor/outdoor rated; conformable material with repositionable adhesive allows label to be removed and reused or used in temporary applications; provides durability, high temperature resistance, and dimensional stability for rough or textured surfaces; resists oil and abrasion. |

### Perforation for half marker



Terminal Block Marker

| Part Number    | Legend  | Total Markers Each Legend | Std. Pkg. Book(s) | Std. Ctn. Book(s) |
|----------------|---|---------------------------|-------------------|-------------------|
| <b>PCMB-1</b>  | 0 thru 9  | 45                        | 1                 | 10                |
| <b>PCMB-2</b>  | A thru Z, 0 thru 15, +, -, /  | 10                        | 1                 | 10                |
| <b>PCMB-3</b>  | 1 thru 45   | 10                        | 1                 | 10                |
| <b>PCMB-4</b>  | 1, 2, 3   | 150                       | 1                 | 10                |
| <b>PCMB-5</b>  | A, B, C   | 150                       | 1                 | 10                |
| <b>PCMB-6</b>  | T1, T2, T3  | 150                       | 1                 | 10                |
| <b>PCMB-7</b>  | L1, L2, L3  | 150                       | 1                 | 10                |
| <b>PCMB-8</b>  | 1 thru 15<br>16 thru 90<br>A thru Z, +, -, /, 0   | 6<br>4<br>2               | 1                 | 10                |
| <b>PCMB-9</b>  | 1, 2, 3, A, B, C<br>L1, L2, L3, T1, T2, T3  | 45<br>30                  | 1                 | 10                |
| <b>PCMB-10</b> | Solid NEMA colors red, yellow, white, light blue, light green, black, brown, orange, gray, dark green | 45                        | 1                 | 10                |
| <b>PCMB-11</b> | 1 thru 30   | 15                        | 1                 | 10                |
| <b>PCMB-12</b> | A thru Z<br>+<br>-<br>Blank (write-on)  | 15<br>8<br>7<br>21        | 1                 | 10                |
| <b>PCMB-13</b> | + , - , AC, DC<br>POS, NEG, GND<br>NEUT<br>SPARE, Blank (write-on)                                    | 45<br>21<br>21<br>21      | 1                 | 10                |
| <b>PCMB-14</b> | 46 thru 90  | 10                        | 1                 | 10                |
| <b>PCMB-15</b> | 0, +, -<br>1 thru 45  | 15<br>10                  | 1                 | 10                |
| <b>PCMB-16</b> | 0 thru 33, A, B, C, +, -, L1, L2, L3, T1, T2, T3  | 10                        | 1                 | 10                |
| <b>PCMB-25</b> | 0 thru 9<br>L1, L2, L3, T1, T2, T3  | 45<br>15                  | 1                 | 10                |

Legend: Black Background: White

Marker sizes:

Full size marker – .22" x 1.38" (5.60mm x 34.90mm). Maximum wire O.D., .38" (9.50mm).

Half size marker – .22" x .69" (5.60mm x 17.40mm). Maximum wire O.D., .19" (4.70mm).

Terminal block marker – .22" x .25" (5.60mm x 6.30mm).

## Blank Self-Laminating Write-On Cable Marker Books

- 10 pages of markers per book
- Clear section of marker over laminates and protects printed legend
- Markers have ink receptive area to allow handwritten legends



| Part Number | Width |      | Length |       | Markers Per Book | Std. Pkg. Book(s) | Std. Ctn. Book(s) |
|-------------|-------|------|--------|-------|------------------|-------------------|-------------------|
|             | In.   | mm   | In.    | mm    |                  |                   |                   |
| PSCB-12Y    | 0.50  | 12.7 | 1.50   | 38.1  | 180              | 1                 | 10                |
| PSCB-13Y    | 1.50  | 38.1 | 3.00   | 76.2  | 40               | 1                 | 10                |
| PSCB-16Y    | 1.50  | 38.1 | 6.00   | 152.4 | 20               | 1                 | 10                |
| PSCB-3Y     | 1.00  | 25.4 | 3.00   | 76.2  | 60               | 1                 | 10                |
| PSCB-3YELY* | 1.00  | 25.4 | 3.00   | 76.2  | 60               | 1                 | 10                |
| PSCB-5Y     | 1.00  | 25.4 | 5.00   | 127.0 | 30               | 1                 | 10                |
| PSCB-6Y     | 1.00  | 25.4 | 6.00   | 152.4 | 30               | 1                 | 10                |

\*Yellow.

A.  
System  
Overview

B1.  
Cable Ties

B2.  
Cable  
Accessories

B3.  
Stainless  
Steel Ties

C1.  
Wiring  
Duct

C2.  
Surface  
Raceway

C3.  
Abrasion  
Protection

C4.  
Cable  
Management

D1.  
Terminals

D2.  
Power  
Connectors

D3.  
Grounding  
Connectors

E1.  
Labeling  
Systems

E2.  
Labels

E3.  
Pre-Printed  
& Write-On  
Markers

E4.  
Permanent  
Identification

E5.  
Lockout/  
Tagout  
& Safety  
Solutions

F.  
Index

A. System Overview

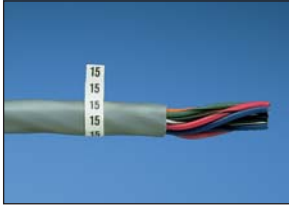
## Pre-Printed Marker Cards PCM Type

B1. Cable Ties

• Marker cards printed in a variety of legends allows “kitting” for project builds

• Plastic liner provides easy removal of markers while protecting unused markers

B2. Cable Accessories



B3. Stainless Steel Ties

C1. Wiring Duct

C2. Surface Raceway

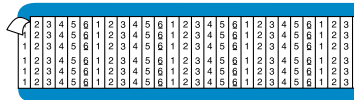


PCM-7

C3. Abrasion Protection

C4. Cable Management

D1. Terminals



PCM-1-6

D2. Power Connectors

D3. Grounding Connectors

E1. Labeling Systems

E2. Labels

E3. Pre-Printed & Write-On Markers

E4. Permanent Identification

E5. Lockout/Tagout & Safety Solutions

F. Index

### Material Chart

| Material           | Print Method | Temperature Range                 | Features   |
|--------------------|--------------|-----------------------------------|--|
| Vinyl Cloth, White | Pre-Printed  | -50°F to 170°F<br>(-46°C to 77°C) | Indoor/outdoor rated; conformable material with repositionable adhesive allows label to be removed and reused or used in temporary applications; provides durability, high temperature resistance, and dimensional stability for rough or textured surfaces; resists oil and abrasion. |

| Part Number        | Legend       | Width |      | Length |       | Markers Per Card | Std. Pkg. Card(s) | Std. Ctn. Card(s) |      |      |      |       |    |    |     |
|--------------------|--------------|-------|------|--------|-------|------------------|-------------------|-------------------|------|------|------|-------|----|----|-----|
|                    |              | In.   | mm   | In.    | mm    |                  |                   |                   |      |      |      |       |    |    |     |
| <b>PCM-0</b>       | 0            | 0.25  | 6.35 | 1.50   | 38.1  | 36               | 25                | 100               |      |      |      |       |    |    |     |
| thru               | thru         |       |      |        |       |                  |                   |                   |      |      |      |       |    |    |     |
| <b>PCM-99</b>      | 99           |       |      |        |       |                  |                   |                   |      |      |      |       |    |    |     |
| <b>PCM-100</b>     | 100          | 0.36  | 9.14 | 1.50   | 38.1  | 25               | 25                | 100               |      |      |      |       |    |    |     |
| thru               | thru         |       |      |        |       |                  |                   |                   |      |      |      |       |    |    |     |
| <b>PCM-202</b>     | 202          |       |      |        |       |                  |                   |                   |      |      |      |       |    |    |     |
| <b>PCMH-0</b>      | 0            | 0.25  | 6.35 | 1.50   | 38.1  | 72               | 25                | 100               |      |      |      |       |    |    |     |
| thru               | thru         |       |      |        |       |                  |                   |                   |      |      |      |       |    |    |     |
| <b>PCMH-25</b>     | 25           |       |      |        |       |                  |                   |                   |      |      |      |       |    |    |     |
| <b>PCM-1-3</b>     | 1 thru 3     | 0.25  | 6.35 | 1.50   | 38.10 | 36               | 25                | 100               |      |      |      |       |    |    |     |
| <b>PCM-1-4</b>     | 1 thru 4     |       |      |        |       |                  |                   |                   |      |      |      |       |    |    |     |
| <b>PCM-1-5</b>     | 1 thru 5     |       |      |        |       |                  |                   |                   |      |      |      |       |    |    |     |
| <b>PCM-1-6</b>     | 1 thru 6     |       |      |        |       |                  |                   |                   |      |      |      |       |    |    |     |
| <b>PCM-1-8</b>     | 1 thru 8     |       |      |        |       |                  |                   |                   |      |      |      |       |    |    |     |
| <b>PCM-1-9</b>     | 1 thru 9     |       |      |        |       |                  |                   |                   |      |      |      |       |    |    |     |
| <b>PCM-0-9</b>     | 0 thru 9     |       |      |        |       |                  |                   |                   |      |      |      |       |    |    |     |
| <b>PCM-1-10</b>    | 1 thru 10    |       |      |        |       |                  |                   |                   |      |      |      |       |    |    |     |
| <b>PCM-1-12</b>    | 1 thru 12    |       |      |        |       |                  |                   |                   |      |      |      |       |    |    |     |
| <b>PCM-1-16</b>    | 1 thru 16    |       |      |        |       |                  |                   |                   |      |      |      |       |    |    |     |
| <b>PCM-1-18</b>    | 1 thru 18    |       |      |        |       |                  |                   |                   |      |      |      |       |    |    |     |
| <b>PCM-19-36</b>   | 19 thru 36   |       |      |        |       |                  |                   |                   |      |      |      |       |    |    |     |
| <b>PCM-1-33</b>    | 1 thru 33    |       |      |        |       |                  |                   |                   | 0.27 | 6.91 | 1.50 | 38.10 | 33 | 25 | 100 |
| <b>PCM-34-66</b>   | 34 thru 66   |       |      |        |       |                  |                   |                   |      |      |      |       |    |    |     |
| <b>PCM-67-99</b>   | 67 thru 99   |       |      |        |       |                  |                   |                   |      |      |      |       |    |    |     |
| <b>PCM-100-124</b> | 100 thru 124 |       |      |        |       |                  |                   |                   |      |      |      |       |    |    |     |
| <b>PCM-125-149</b> | 125 thru 149 |       |      |        |       |                  |                   |                   |      |      |      |       |    |    |     |
| <b>PCM-150-174</b> | 150 thru 174 |       |      |        |       |                  |                   |                   |      |      |      |       |    |    |     |
| <b>PCM-175-199</b> | 175 thru 199 |       |      |        |       |                  |                   |                   |      |      |      |       |    |    |     |
| <b>PCM-200-224</b> | 200 thru 224 |       |      |        |       |                  |                   |                   |      |      |      |       |    |    |     |
| <b>PCM-225-249</b> | 225 thru 249 |       |      |        |       |                  |                   |                   |      |      |      |       |    |    |     |
| <b>PCM-250-274</b> | 250 thru 274 |       |      |        |       |                  |                   |                   |      |      |      |       |    |    |     |
| <b>PCM-275-299</b> | 275 thru 299 |       |      |        |       |                  |                   |                   |      |      |      |       |    |    |     |
| <b>PCM-300-324</b> | 300 thru 324 | 0.36  | 9.14 | 1.50   | 38.10 | 25               | 25                | 100               |      |      |      |       |    |    |     |
| <b>PCM-325-349</b> | 325 thru 349 |       |      |        |       |                  |                   |                   |      |      |      |       |    |    |     |
| <b>PCM-350-374</b> | 350 thru 374 |       |      |        |       |                  |                   |                   |      |      |      |       |    |    |     |
| <b>PCM-375-399</b> | 375 thru 399 |       |      |        |       |                  |                   |                   |      |      |      |       |    |    |     |
| <b>PCM-400-424</b> | 400 thru 424 |       |      |        |       |                  |                   |                   |      |      |      |       |    |    |     |
| <b>PCM-425-449</b> | 425 thru 449 |       |      |        |       |                  |                   |                   |      |      |      |       |    |    |     |
| <b>PCM-450-474</b> | 450 thru 474 |       |      |        |       |                  |                   |                   |      |      |      |       |    |    |     |
| <b>PCM-475-499</b> | 475 thru 499 |       |      |        |       |                  |                   |                   |      |      |      |       |    |    |     |
| <b>PCM-500-524</b> | 500 thru 524 |       |      |        |       |                  |                   |                   |      |      |      |       |    |    |     |

## Pre-Printed Marker Cards PCM Type (continued)



PCM-A1

| Part Number              | Legend               | Width |      | Length |      | Markers Per Card | Std. Pkg. Card(s) | Std. Ctn. Card(s) |
|--------------------------|----------------------|-------|------|--------|------|------------------|-------------------|-------------------|
|                          |                      | In.   | mm   | In.    | mm   |                  |                   |                   |
| PCM-A<br>thru<br>PCM-Z   | A<br>thru<br>Z       | 0.25  | 6.35 | 1.50   | 38.1 | 36               | 25                | 100               |
| PCM-A-Z                  | A thru Z             | 0.25  | 6.35 | 1.50   | 38.1 |                  | 25                | 100               |
| PCM-A-Z-0-9              | A thru Z<br>0 thru 9 | 0.25  | 6.35 | 1.50   | 38.1 |                  | 25                | 100               |
| PCM-A1<br>thru<br>PCM-A4 | A1<br>thru<br>A4     | 0.25  | 6.35 | 1.50   | 38.1 |                  | 25                | 100               |
| PCM-B1<br>thru<br>PCM-B5 | B1<br>thru<br>B5     | 0.25  | 6.35 | 1.50   | 38.1 |                  | 25                | 100               |
| PCM-C1<br>thru<br>PCM-C4 | C1<br>thru<br>C4     | 0.25  | 6.35 | 1.50   | 38.1 |                  | 25                | 100               |
| PCM-E1<br>thru<br>PCM-E3 | E1<br>thru<br>E3     | 0.25  | 6.35 | 1.50   | 38.1 |                  | 25                | 100               |
| PCM-F1<br>thru<br>PCM-F4 | F1<br>thru<br>F4     | 0.25  | 6.35 | 1.50   | 38.1 |                  | 25                | 100               |
| PCM-H1<br>thru<br>PCM-H5 | H1<br>thru<br>H5     | 0.25  | 6.35 | 1.50   | 38.1 |                  | 25                | 100               |
| PCM-L1<br>thru<br>PCM-L5 | L1<br>thru<br>L5     | 0.25  | 6.35 | 1.50   | 38.1 |                  | 25                | 100               |
| PCM-M1<br>thru<br>PCM-M2 | M1<br>thru<br>M2     | 0.25  | 6.35 | 1.50   | 38.1 |                  | 25                | 100               |
| PCM-P1<br>thru<br>PCM-P3 | P1<br>thru<br>P3     | 0.25  | 6.35 | 1.50   | 38.1 |                  | 25                | 100               |
| PCM-R1<br>thru<br>PCM-R5 | R1<br>thru<br>R5     | 0.25  | 6.35 | 1.50   | 38.1 |                  | 25                | 100               |
| PCM-S1<br>thru<br>PCM-S5 | S1<br>thru<br>S5     | 0.25  | 6.35 | 1.50   | 38.1 |                  | 25                | 100               |
| PCM-T1<br>thru<br>PCM-T9 | T1<br>thru<br>T9     | 0.25  | 6.35 | 1.50   | 38.1 |                  | 25                | 100               |
| PCM-X1<br>thru<br>PCM-X4 | X1<br>thru<br>X4     | 0.25  | 6.35 | 1.50   | 38.1 |                  | 25                | 100               |

Table continues on page E3.6

A.  
System  
Overview

B1.  
Cable Ties

B2.  
Cable  
Accessories

B3.  
Stainless  
Steel Ties

C1.  
Wiring  
Duct

C2.  
Surface  
Raceway

C3.  
Abrasion  
Protection

C4.  
Cable  
Management

D1.  
Terminals

D2.  
Power  
Connectors

D3.  
Grounding  
Connectors

E1.  
Labeling  
Systems

E2.  
Labels

E3.  
Pre-Printed  
& Write-On  
Markers

E4.  
Permanent  
Identification

E5.  
Lockout/  
Tagout  
& Safety  
Solutions

F.  
Index

A. System Overview

## Pre-Printed Marker Cards PCM Type (continued)

B1. Cable Ties

B2. Cable Accessories



PCM-1T1

B3. Stainless Steel Ties

C1. Wiring Duct

C2. Surface Raceway

C3. Abrasion Protection

C4. Cable Management

D1. Terminals

D2. Power Connectors

D3. Grounding Connectors

E1. Labeling Systems

E2. Labels

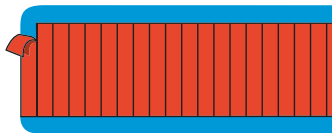
E3. Pre-Printed & Write-On Markers

E4. Permanent Identification

E5. Lockout/Tagout & Safety Solutions

F. Index

| Part Number | Legend | Width |      | Length |       | Markers Per Card | Std. Pkg. Card(s) | Std. Ctn. Card(s) |
|-------------|--------|-------|------|--------|-------|------------------|-------------------|-------------------|
|             |        | In.   | mm   | In.    | mm    |                  |                   |                   |
| PCM-1L1     | 1L1    | 0.36  | 9.14 | 1.50   | 38.10 | 25               | 25                | 100               |
| thru        | thru   |       |      |        |       |                  |                   |                   |
| PCM-1L3     | 1L3    | 0.36  | 9.14 | 1.50   | 38.10 |                  | 25                | 100               |
| thru        | thru   |       |      |        |       |                  |                   |                   |
| PCM-2L1     | 2L1    | 0.36  | 9.14 | 1.50   | 38.10 |                  | 25                | 100               |
| thru        | thru   |       |      |        |       |                  |                   |                   |
| PCM-2L3     | 2L3    | 0.36  | 9.14 | 1.50   | 38.10 |                  | 25                | 100               |
| thru        | thru   |       |      |        |       |                  |                   |                   |
| PCMH-3L1    | 3L1    | 0.36  | 9.14 | 1.50   | 38.10 |                  | 25                | 100               |
| thru        | thru   |       |      |        |       |                  |                   |                   |
| PCMH-3L3    | 3L3    | 0.36  | 9.14 | 1.50   | 38.10 | 25               | 100               |                   |
| thru        | thru   |       |      |        |       |                  |                   |                   |
| PCM-4L1     | 4L1    | 0.36  | 9.14 | 1.50   | 38.10 | 25               | 100               |                   |
| thru        | thru   |       |      |        |       |                  |                   |                   |
| PCM-4L3     | 4L3    | 0.36  | 9.14 | 1.50   | 38.10 | 25               | 100               |                   |
| thru        | thru   |       |      |        |       |                  |                   |                   |
| PCM-1T1     | 1T1    | 0.36  | 9.14 | 1.50   | 38.10 | 25               | 100               |                   |
| thru        | thru   |       |      |        |       |                  |                   |                   |
| PCM-1T3     | 1T3    | 0.36  | 9.14 | 1.50   | 38.10 | 25               | 100               |                   |
| thru        | thru   |       |      |        |       |                  |                   |                   |
| PCM-3T1     | 3T1    | 0.36  | 9.14 | 1.50   | 38.10 | 25               | 100               |                   |
| thru        | thru   |       |      |        |       |                  |                   |                   |
| PCM-3T3     | 3T3    |       |      |        |       |                  |                   |                   |



| Part Number | Color       | Width |      | Length |       | Markers Per Card | Std. Pkg. Card(s) | Std. Ctn. Card(s) |
|-------------|-------------|-------|------|--------|-------|------------------|-------------------|-------------------|
|             |             | In.   | mm   | In.    | mm    |                  |                   |                   |
| PCM-BLK     | Black       | .25   | 6.35 | 1.50   | 38.10 | 36               | 25                | 100               |
| PCM-BRN     | Brown       | .25   | 6.35 | 1.50   | 38.10 |                  | 25                | 100               |
| PCM-DBL     | Dark Blue   | .25   | 6.35 | 1.50   | 38.10 |                  | 25                | 100               |
| PCM-DGN     | Dark Green  | .25   | 6.35 | 1.50   | 38.10 |                  | 25                | 100               |
| PCM-GRY     | Gray        | .25   | 6.35 | 1.50   | 38.10 |                  | 25                | 100               |
| PCM-LBL     | Light Blue  | .25   | 6.35 | 1.50   | 38.10 |                  | 25                | 100               |
| PCM-LGN     | Light Green | .25   | 6.35 | 1.50   | 38.10 |                  | 25                | 100               |
| PCM-ORN     | Orange      | .25   | 6.35 | 1.50   | 38.10 |                  | 25                | 100               |
| PCM-PNK     | Pink        | .25   | 6.35 | 1.50   | 38.10 |                  | 25                | 100               |
| PCM-PUR     | Purple      | .25   | 6.35 | 1.50   | 38.10 |                  | 25                | 100               |
| PCM-RED     | Red         | .25   | 6.35 | 1.50   | 38.10 |                  | 25                | 100               |
| PCM-TAN     | Tan         | .25   | 6.35 | 1.50   | 38.10 |                  | 25                | 100               |
| PCM-WHT     | White       | .25   | 6.35 | 1.50   | 38.10 |                  | 25                | 100               |
| PCM-YEL     | Yellow      | .25   | 6.35 | 1.50   | 38.10 |                  | 25                | 100               |

Marker size:

Full size marker – 1.50" (38.10mm). Maximum wire O.D., .38" (9.50mm).

## Wire Marker Card Number Combination Packs



Numbers



Letters

| Part Number    | Legend            | Cards Per Legend | Markers Per Card | Std. Pkg. Qty. | Std. Ctn. Qty. |
|----------------|-------------------|------------------|------------------|----------------|----------------|
| PCMCP-1-25*    | 1 thru 25         | 1 each           | 36               | 1              | 4              |
| PCMCP-26-50*   | 26 thru 50        | 1 each           |                  | 1              | 4              |
| PCMCP-51-75*   | 51 thru 75        | 1 each           |                  | 1              | 4              |
| PCMCP-76-100*  | 76 thru 99<br>100 | 1 each           | 36<br>25         | 1              | 4              |
| PCMCP-101-125* | 101 thru 125      | 1 each           | 25               | 1              | 4              |
| PCMCP-126-150* | 126 thru 150      | 1 each           |                  | 1              | 4              |
| PCMCP-A-Z**    | A thru Z          | 1 each           | 36               | 1              | 4              |

Marker size:

Full size marker – 1.50" (38.10mm). Maximum wire O.D. .38" (9.50mm).

\*One card each number, 25 cards per package.

\*\*One card each letter, 26 cards per package.

## Pre-Printed Marker Cards

- Choose from the many legends available in general purpose vinyl cloth, or from special materials available to meet a variety of application environments

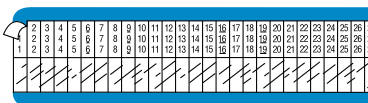
- All markers are offered in full size – 1.50" (38.1mm) long for wire outside diameter up to 0.38" (9.5mm); half size markers for wire outside diameter up to 0.19" (4.7mm) can be ordered
- Each marker on card has a different legend

### Material Chart



PSM-7

| Material                              | Print Method | Temperature Range                 | Features   |
|---------------------------------------|--------------|-----------------------------------|--|
| Self-Laminating Vinyl, White Print-On | Pre-Printed  | -40°F to 150°F<br>(-40°C to 66°C) | Indoor/outdoor rated; thin and conformable; preferred material for most general wire/cable labeling. |



PSM-1-33



PSM-W

| Part Number                 | Legend          | Width |      | Length |      | Markers Per Card | Std. Pkg. Card(s) | Std. Ctn. Card(s) |
|-----------------------------|-----------------|-------|------|--------|------|------------------|-------------------|-------------------|
|                             |                 | In.   | mm   | In.    | mm   |                  |                   |                   |
| PSM-0-Y<br>thru<br>PSM-52-Y | 0<br>thru<br>52 | 0.25  | 6.35 | 0.75   | 19.1 | 36               | 25                | 100               |
| PSM-0-9-Y                   | 0 thru 9        | 0.27  | 6.86 | 0.75   | 19.1 | 33               | 25                | 100               |
| PSM-1-33-Y                  | 1 thru 33       | 0.27  | 6.86 | 0.75   | 19.1 |                  | 25                | 100               |
| PSM-34-66-Y                 | 34 thru 66      | 0.27  | 6.86 | 0.75   | 19.1 |                  | 25                | 100               |
| PSM-67-99-Y                 | 67 thru 99      | 0.27  | 6.86 | 0.75   | 19.1 |                  | 25                | 100               |
| PSM-A-Y<br>thru<br>PSM-Z-Y  | A<br>thru<br>Z  | 0.25  | 6.35 | 0.75   | 19.1 | 36               | 25                | 100               |
| PSM-A-Z-Y                   | A thru Z        | 0.25  | 6.35 | 0.75   | 19.1 |                  | 25                | 100               |

Legend: Black Background: White

Marker sizes:

Full size marker – 1.50" (38.10mm). Maximum wire O.D., 0.38" (9.50mm).

Half size marker – 0.75" (19.10mm). Maximum wire O.D., 0.19" (4.70mm).

A. System Overview

## Pre-Printed Marker Cards PPM Type

B1. Cable Ties

B2. Cable Accessories

B3. Stainless Steel Ties

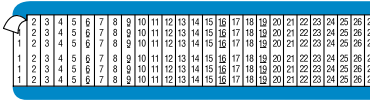
### Material Chart



PPM-7

| Material         | Print Method | Temperature Range                  | Features   |
|------------------|--------------|------------------------------------|--|
| High Temp, White | Pre-Printed  | -40°F to 275°F<br>(-40°C to 135°C) | Indoor/outdoor rated; self-extinguishing; ideal for component labeling in harsh environments |

C1. Wiring Duct



PPM-1-33

C2. Surface Raceway

C3. Abrasion Protection



PPM-A

C4. Cable Management

D1. Terminals

D2. Power Connectors

D3. Grounding Connectors

E1. Labeling Systems

E2. Labels

E3. Pre-Printed & Write-On Markers

E4. Permanent Identification

E5. Lockout/Tagout & Safety Solutions

F. Index

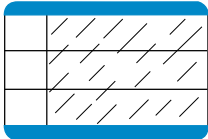
| Part Number       | Legend    | Width |      | Length |       | Markers Per Card | Std. Pkg. Card(s) | Std. Ctn. Card(s) |
|-------------------|-----------|-------|------|--------|-------|------------------|-------------------|-------------------|
|                   |           | In.   | mm   | In.    | mm    |                  |                   |                   |
| PPM-0 thru PPM-25 | 0 thru 25 | 0.25  | 6.35 | 1.50   | 38.10 | 36               | 25                | 100               |
| PPM-1-33          | 1 thru 33 | 0.27  | 6.91 | 1.50   | 38.10 | 33               | 25                | 100               |
| PPM-A thru PPM-C  | A thru C  | 0.25  | 6.35 | 1.50   | 38.10 | 36               | 25                | 100               |

Legend: Black Background: White  
 Marker sizes:  
 Half size marker – 1.50" (38.10mm). Maximum wire O.D., .38" (9.50mm).

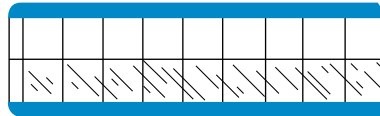


## Write-On Marker Cards – Self-Laminating

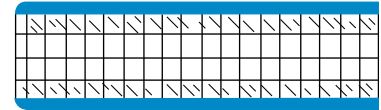
- Clear section of marker overlaminates and protects write-on legend
- Markers have ink receptive area to allow hand-written legends



Type PSCC



Type PSWM



Type PSWMH

| Part Number | Width |       | Length |        | Print-On Height |       | Min. Cable O.D. |     | Max. Cable O.D. |      | Markers Per Card | Std. Pkg. Card(s) | Std. Ctn. Card(s) |
|-------------|-------|-------|--------|--------|-----------------|-------|-----------------|-----|-----------------|------|------------------|-------------------|-------------------|
|             | In.   | mm    | In.    | mm     | In.             | mm    | In.             | mm  | In.             | mm   |                  |                   |                   |
| PSCC-3Y     | 1.00  | 25.40 | 3.00   | 76.20  | 0.75            | 19.05 | 0.240           | 6.1 | 0.72            | 18.2 | 3                | 25                | 100               |
| PSCC-5Y     | 1.00  | 25.40 | 5.00   | 127.00 | 1.00            | 25.40 | 0.320           | 8.1 | 1.27            | 32.3 | 3                | 25                | 100               |
| PSWM-375Y   | 0.38  | 9.53  | 1.50   | 38.05  | 0.75            | 19.05 | 0.240           | 6.1 | 0.24            | 6.1  | 25               | 25                | 100               |
| PSWM-750Y   | 0.75  | 19.05 | 1.50   | 38.05  | 0.75            | 19.05 | 0.240           | 6.1 | 0.24            | 6.1  | 12               | 25                | 100               |
| PSWM-1500Y  | 1.50  | 38.05 | 1.50   | 38.05  | 0.75            | 19.05 | 0.240           | 6.1 | 0.24            | 6.1  | 6                | 25                | 100               |
| PSWMH-375Y  | 0.38  | 9.53  | 0.75   | 19.05  | 0.38            | 9.53  | 0.120           | 3.1 | 0.12            | 3.0  | 50               | 25                | 100               |
| PSWMH-750Y  | 0.75  | 19.05 | 0.75   | 19.05  | 0.38            | 9.53  | 0.120           | 3.1 | 0.12            | 3.0  | 24               | 25                | 100               |

## Pre-Printed Marker Tape Dispenser

- Flexible polyester marker tape conforms tightly to wires/cables
- Dispenser allows marker tape to be cut to the exact length required for marking any size wire/cable
- Durable plastic dispenser can be attached to tool belt for industrial use



### Material Chart

| Material         | Print Method | Temperature Range               | Features  |
|------------------|--------------|---------------------------------|---|
| Polyester, White | Pre-Printed  | -40°F to 250°F (-40°C to 121°C) | Indoor/outdoor rated; laminated label material protects legend from abrasion and chemicals; resistant to UV light chemical atmosphere and abrasion; excellent life and adhesion properties. |

| Part Number | Part Description  | Roll |     | Rolls Per Legend Per Pkg. | Std. Pkg. Qty. | Std. Ctn. Qty. |
|-------------|---|------|-----|---------------------------|----------------|----------------|
|             |   | Ft.  | m   |                           |                |                |
| PMD         | Empty dispenser.  | —    | —   | —                         | 1              | 10             |
| PMD-0-9     | Dispenser filled with one roll each legend 0 thru 9.  | 8.0  | 2.4 | 1                         | 1              | 10             |
| PMD-NEMA    | Dispenser filled with one roll each of solid NEMA colors: black, light blue, brown, gray, light green, orange, purple, red, white and yellow. | 8.0  | 2.4 | 1                         | 1              | 10             |

A. System Overview

## Pre-Printed Marker Tape Refills

B1. Cable Ties



B2. Cable Accessories

B3. Stainless Steel Ties



C1. Wiring Duct

C2. Surface Raceway

C3. Abrasion Protection

C4. Cable Management

D1. Terminals

D2. Power Connectors

D3. Grounding Connectors

| Part Number                    | Legend  | Roll Length |     | Rolls Per Legend Per Pkg. | Std. Pkg. Roll(s) | Std. Ctn. Roll(s) |
|--------------------------------|---|-------------|-----|---------------------------|-------------------|-------------------|
|                                |   | Ft.         | m   |                           |                   |                   |
| PMDR-0-9<br>thru<br>PMDR-90-99 | 0 thru 9<br>thru<br>90 thru 99                | 8.0         | 2.4 | 10                        | 10                | 1                 |
| PMDR-0<br>thru<br>PMDR-9       | 0<br>thru<br>9                                |             |     |                           |                   | 10                |
| PMDR-A<br>thru<br>PMDR-Z       | A<br>thru<br>Z                                |             |     |                           |                   | 10                |
| PMDR-L1<br>thru<br>PMDR-L3     | L1<br>thru<br>L3                              |             |     |                           |                   | 10                |
| PMDR-T1<br>thru<br>PMDR-T3     | T1<br>thru<br>T3                              |             |     |                           |                   | 10                |
| PMDR-GRS                       | Ground symbol                                 |             |     |                           |                   | 10                |
| PMDR-MIN                       | Minus symbol                                  |             |     |                           |                   | 10                |
| PMDR-PLS                       | Plus symbol                                   |             |     |                           |                   | 10                |
| PMDR-BLK                       | Black   |             |     |                           |                   | 10                |
| PMDR-BL                        | Light Blue                                    |             |     |                           |                   | 10                |
| PMDR-BRN                       | Brown   | 10          |     |                           |                   |                   |
| PMDR-GRN                       | Light Green                                   | 10          |     |                           |                   |                   |
| PMDR-GRY                       | Gray  | 8.0         | 2.4 | 10                        | 10                | 10                |
| PMDR-ORN                       | Orange  |             |     |                           |                   | 10                |
| PMDR-PUR                       | Purple  |             |     |                           |                   | 10                |
| PMDR-RED                       | Red   |             |     |                           |                   | 10                |
| PMDR-WHT                       | White   |             |     |                           |                   | 10                |
| PMDR-YEL                       | Yellow  |             |     |                           |                   | 10                |
| PMDR-NEMA                      | One of each of the NEMA colors featured above |             |     |                           |                   | 1                 |

E1. Labeling Systems

E2. Labels

E3. Pre-Printed & Write-On Markers

E4. Permanent Identification

E5. Lockout/Tagout & Safety Solutions

F. Index

## Self-Laminating Wire Marker Dispenser

- Self-laminating labels are provided in handy dispenser which protects markers when not in use
- Clear section of marker overlaminates and protects write-on legend
- Quick, easy to use for smaller installations and maintenance



### Material Chart

| Material                              | Print Method | Temperature Range              | Features   |
|---------------------------------------|--------------|--------------------------------|--|
| Self-Laminating Vinyl, White Print-On | Pre-Printed  | -40°F to 150°F (-40°C to 66°C) | Indoor/outdoor rated; thin and conformable; preferred material for most general wire/cable labeling. |

| Part Number          | Part Description   | Width |       | Length |       | Print-On Height |       | Min. Cable O.D. |      | Max. Cable O.D. |       | Std. Pkg. Qty. | Std. Ctn. Qty. |
|----------------------|--|-------|-------|--------|-------|-----------------|-------|-----------------|------|-----------------|-------|----------------|----------------|
|                      |  | In.   | mm    | In.    | mm    | In.             | mm    | In.             | mm   | In.             | mm    |                |                |
| <b>Dispenser Kit</b> |  |       |       |        |       |                 |       |                 |      |                 |       |                |                |
| <b>S100X125VARY</b>  | (1) Dispenser.<br>(1) Roll, white write-on, vinyl label, 200/roll.<br>(1) PFX-0 pen. | 1.00  | 25.40 | 1.25   | 31.75 | 0.38            | 9.65  | 0.12            | 3.07 | 0.28            | 7.03  | 1              | 10             |
| <b>S100X225VARY</b>  | (1) Dispenser.<br>(1) Roll, white write-on, vinyl label, 100/roll.<br>(1) PFX-0 pen. | 1.00  | 25.40 | 2.25   | 57.15 | 0.75            | 19.05 | 0.24            | 6.06 | 0.48            | 12.13 | 1              | 10             |
| <b>Refill Rolls</b>  |  |       |       |        |       |                 |       |                 |      |                 |       |                |                |
| <b>S100X125VAFY</b>  | Replacement roll. White write-on, vinyl label, 200/roll.                             | 1.00  | 25.40 | 1.25   | 31.75 | 0.38            | 9.65  | 0.12            | 3.07 | 0.28            | 7.03  | 1              | 10             |
| <b>S100X225VAFY</b>  | Replacement roll. White write-on, vinyl label 100/roll.                              | 1.00  | 25.40 | 2.25   | 57.15 | 0.75            | 19.05 | 0.24            | 6.06 | 0.48            | 12.13 | 1              | 10             |

Can be clearly identified with Panduit permanent marking pens shown on page E5.19.

## Pre-Printed Clip-On Wire Markers

- Non-adhesive markers grip tightly to wire/cable
- Markers supplied on application wand tool
- Chevron cut keeps multiple markers aligned
- Black legend is embossed into wire marker clip



### Material Chart

| Material            | Print Method | Temperature Range              | Features   |
|---------------------|--------------|--------------------------------|--|
| Non-Adhesive Acetal | Pre-Printed  | -22°F to 194°F (-30°C to 90°C) | Indoor/outdoor rated; durable material that has excellent resiliency to oils and solvents. |

| Part Number | Legend | No. of Markers Per Wand | Markers Per Pkg. | Std. Pkg. Qty. | Std. Ctn. Qty. |
|-------------|--------|-------------------------|------------------|----------------|----------------|
|-------------|--------|-------------------------|------------------|----------------|----------------|

### Wire/Cable Diameter 0.08" – 0.10" (2.00mm – 2.50mm)

|  |                |    |     |   |    |
|--|----------------|----|-----|---|----|
| <b>PCA07-A</b><br>thru<br><b>PCA07-Z</b> | A<br>thru<br>Z | 30 | 300 | 1 | 10 |
| <b>PCA07-A-J</b>                         | A-J            |    |     | 1 | 10 |
| <b>PCA07-K-T</b>                         | K-T            |    |     | 1 | 10 |
| <b>PCA07-U-Z</b>                         | U-Z            |    |     | 1 | 10 |
| <b>PCA07-0</b><br>thru<br><b>PCA07-9</b> | 0<br>thru<br>9 |    |     | 1 | 10 |
| <b>PCA07-0-9</b>                         | 0-9            |    |     | 1 | 10 |
| <b>PCA07-MIN</b>                         | —              |    |     | 1 | 10 |
| <b>PCA07-PLS</b>                         | +              |    |     | 1 | 10 |

Table continues on page E3.12

## Pre-Printed Clip-On Wire Markers (continued)

|     |                                   |
|-----|-----------------------------------|
| A.  | System Overview                   |
| B1. | Cable Ties                        |
| B2. | Cable Accessories                 |
| B3. | Stainless Steel Ties              |
| C1. | Wiring Duct                       |
| C2. | Surface Raceway                   |
| C3. | Abrasion Protection               |
| C4. | Cable Management                  |
| D1. | Terminals                         |
| D2. | Power Connectors                  |
| D3. | Grounding Connectors              |
| E1. | Labeling Systems                  |
| E2. | Labels                            |
| E3. | Pre-Printed & Write-On Markers    |
| E4. | Permanent Identification          |
| E5. | Lockout/Tagout & Safety Solutions |
| F.  | Index                             |

| Part Number  | Legend     | No. of Markers Per Wand | Markers Per Pkg. | Std. Pkg. Qty. | Std. Ctn. Qty. |    |    |
|--|------------|-------------------------|------------------|----------------|----------------|----|----|
| <b>Wire/Cable Diameter 0.11" – 0.13" (2.80mm – 3.30mm)</b> |            |                         |                  |                |                |    |    |
| PCA11-A thru PCA11-Z                                       | A thru Z   | 30                      | 300              | 1              | 10             |    |    |
| PCA11-A-J  | A-J        |                         |                  | 1              | 10             |    |    |
| PCA11-K-T  | K-T        |                         |                  | 1              | 10             |    |    |
| PCA11-U-Z  | U-Z        |                         |                  | 1              | 10             |    |    |
| PCA11-0 thru PCA11-9                                       | 0 thru 9   |                         |                  | 1              | 10             |    |    |
| PCA11-0-9  | 0-9        |                         |                  | 1              | 10             |    |    |
| PCA11-MIN  | —          |                         |                  | 1              | 10             |    |    |
| PCA11-PLS  | +          |                         |                  | 1              | 10             |    |    |
| <b>Wire/Cable Diameter 0.13" – 0.15" (3.30mm – 3.80mm)</b> |            |                         |                  |                |                |    |    |
| PCA13-A thru PCA13-Z                                       | A thru Z   |                         |                  | 30             | 300            | 1  | 10 |
| PCA13-A-J  | A-J        | 1                       | 10               |                |                |    |    |
| PCA13-K-T  | K-T        | 1                       | 10               |                |                |    |    |
| PCA13-U-Z  | U-Z        | 1                       | 10               |                |                |    |    |
| PCA13-0 thru PCA13-9                                       | 0 thru 9   | 1                       | 10               |                |                |    |    |
| PCA13-0-9  | 0-9        | 1                       | 10               |                |                |    |    |
| PCA13-MIN  | —          | 1                       | 10               |                |                |    |    |
| PCA13-PLS  | +          | 1                       | 10               |                |                |    |    |
| <b>Wire/Cable Diameter 0.19" – 0.23" (4.80mm – 5.80mm)</b> |            |                         |                  |                |                |    |    |
| PCA18-A thru PCA18-Z                                       | A thru Z   | 30                      | 300              |                |                | 1  | 10 |
| PCA18-A-J  | A-J        |                         |                  | 1              | 10             |    |    |
| PCA18-K-T  | K-T        |                         |                  | 1              | 10             |    |    |
| PCA18-U-Z  | U-Z        |                         |                  | 1              | 10             |    |    |
| PCA18-0 thru PCA18-9                                       | 0 thru 9   |                         |                  | 1              | 10             |    |    |
| PCA18-0-9  | 0-9        |                         |                  | 1              | 10             |    |    |
| PCA18-MIN  | —          |                         |                  | 1              | 10             |    |    |
| PCA18-PLS  | +          |                         |                  | 1              | 10             |    |    |
| <b>Wire/Cable Diameter 0.23" – 0.37" (5.80mm – 9.40mm)</b> |            |                         |                  |                |                |    |    |
| PCA23-A thru PCA23-Z                                       | A thru Z   |                         |                  | 20             | 60             | 1  | 10 |
| PCA23-A-D  | A-D        | 80                      | 1                |                | 10             |    |    |
| PCA23-E-H  | E-H        |                         | 1                |                | 10             |    |    |
| PCA23-I-L  | I-L        |                         | 1                |                | 10             |    |    |
| PCA23-M-P  | M-P        |                         | 1                |                | 10             |    |    |
| PCA23-Q-T  | Q-T        | 60                      | 1                |                | 10             |    |    |
| PCA23-U-X  | U-X        |                         | 1                |                | 10             |    |    |
| PCA23-Y-Z  | Y-Z, +, -  |                         | 80               |                | 1              | 10 |    |
| PCA23-0 thru PCA23-9                                       | 0 thru 9   |                         |                  |                | 1              | 10 |    |
| PCA23-0-3  | 0-3        | 80                      | 1                |                | 10             |    |    |
| PCA23-4-7  | 4-7        |                         | 1                | 10             |                |    |    |
| PCA23-8-9  | 8, 9, +, - |                         | 1                | 10             |                |    |    |
| PCA23-MIN  | —          | 60                      | 1                | 10             |                |    |    |
| PCA23-PLS  | +          |                         | 1                | 10             |                |    |    |