



BURN[®]



METALLIC CABLE PROTECTION SYSTEM

HOT DIPPED GALVANISED CONDUITS

METALLIC CONDUITS & FITTINGS

ADAPTABLE BOXES

FLEXIBLE CONDUITS

SWITCH & SOCKET BOXES

BRITISH STANDARD



BURN
Conduit & Fittings

Registration Certificate

This is to certify that
the Management Systems of

ROYAL STEEL INDUSTRY CO.,LTD.

have been assessed by AJA Registrars and registered
against the requirements of

ISO 9001:2008

Certificate No: AJAPR1488 Date of Original Registration: 24.06.99
Re-Registration Date: 26.11.14 Date of Re-Registration: 26.11.11



John Sheehan, AJA Registrar



This certificate is issued in respect of the activities & scope of registration detailed in the Associated Registration Schedule.
This certificate has been issued by AJA Registrars Limited (UK & Ireland) Court Gardens, One Avenue Park, Cork City, Co. Cork, Ireland. UK: 0203 7376

Test Report



Report No: 288/7060885 This Report consists of 6 pages

Client: Royal Steel Industry Co Ltd
11115 Moo 2
Amphoe Muang
Samut Sakorn
74000
Thailand

Authority & date: Quotation acceptance from client reference BSI 000009335
Dated 6 August 2007

Items tested: Galvanized Steel Conduits

Specification: BS EN 61386-21:2004 Clauses 8.1, 8.1, 10.2, 10.3, 10.4, 10.7, 11.5 and 14.2.2
Independent Test

Results: See Summary of Results on Page 2

Prepared by: D Sheridan-Walls Test Engineer

Authorized by: G R Easom Principal Engineer

Issue Date: 18 September 2007

Conditions of Issue: This Test Report is issued subject to the conditions stated in current issue of BS002 'General conditions relating to acceptance of testing'. The results contained herein apply only to the particular samples tested and to the specific tests carried out, as detailed in this Test Report. The issuing of this Test Report does not indicate any measure of Approval, Certification, Recognition, Control or Surveillance by BSI of any product. No contract, assignment or substitution from a Test Report may be published or used to advertise a product without the written consent of the Managing Director, BSI Product Services, who reserves the absolute right to agree or reject all or any of the details of any terms or conditions for which consent may be sought.

BSI Product Services Maple Road Avenue Road, Hemel Hempstead, Hertfordshire HP2 4RD Telephone: 0440 750000

Test Report



Report No: 288/7050751 This Report consists of 6 pages

Client: Royal Steel Industry Co Ltd
11115 Moo 2
Amphoe Muang
Samut Sakorn
74000
Thailand

Authority & date: BSI Product Services Quotation Acceptance Form No BSI 0000090817
Dated 22 May 2007

Items tested: Metallic Conduit Fittings

Specification: BS EN 61386-21:2004 Clauses 7.1, 8.1, 8.2, 9.1, 10.3, 10.7, 10.8, 11.2, 14.1.1 and 14.2.2.3
Independent Test

Results: See Summary of Results on Page 2

Prepared by: G R Easom Principal Engineer

Authorized by: D Mackie Senior Engineer

Issue Date: 12 September 2007

Conditions of Issue: This Test Report is issued subject to the conditions stated in current issue of BS002 'General conditions relating to acceptance of testing'. The results contained herein apply only to the particular samples tested and to the specific tests carried out, as detailed in this Test Report. The issuing of this Test Report does not indicate any measure of Approval, Certification, Recognition, Control or Surveillance by BSI of any product. No contract, assignment or substitution from a Test Report may be published or used to advertise a product without the written consent of the Managing Director, BSI Product Services, who reserves the absolute right to agree or reject all or any of the details of any terms or conditions for which consent may be sought.

BSI Product Services Maple Road Avenue Road, Hemel Hempstead, Hertfordshire HP2 4RD Telephone: 0440 750000

Test Report No. 7191044105-MEC12-TYW

dated 07 FEB 2013



Check certificate
and status

Note: This report is based subject to the Testing and Certification Regulations of the TÜV SÜD Group and the General Terms and Conditions of Services of TÜV SÜD PHS PA Ltd. In addition, the report is governed by the terms within the report.

SUBJECT:
Testing of Circular Box Conduit Fitting and Conduit Pipe.

TESTED FOR:
Royal Steel Industry Co., Ltd.
11115 Moo. 2, T.T. Moo. 2, A. Muang,
Samut Sakorn 7400 Thailand
Attn: K. Thawitip Chawattikul

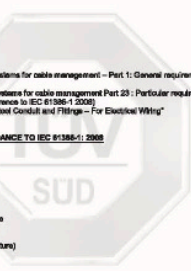
METHOD OF TEST:
1. IEC 61386-1:2008 - Conduit systems for cable management - Part 1: General requirements (Class 3 and Class 4)
2. IEC 61386-23:2002 - Conduit systems for cable management Part 23: Particular requirements Flexible conduit systems (with cross reference to IEC 61386-1:2008)
3. BS 31:1940-Specification for Steel Conduit and Fittings - For Electrical Wiring

TESTS CONDUCTED AS ACCORDANCE TO IEC 61386-1:2008

1. Marking and Documentation
2. Dimensions
3. Construction
4. Compression Test
5. Bending Test
6. Impact Test
7. Hoisting Test
8. Dielectric & Insulation Resistance
9. Corrosion Resistance Test
10. IP 30 Test
11. Tensile test (at ambient temperature)
12. Spread of fire

TESTS CONDUCTED AS ACCORDANCE TO BS 31:1940:

1. Dimensions check
2. Test for resistance to corrosion



Wol @

Head Office:
TÜV SÜD PHS PA Ltd.
Rheinstraße 125
D-90474 Regensburg
Germany (REG)

Phone: +49 940 8930
Fax: +49 940 8931
E-Mail: service@tuev-sud.com
www.tuev-sud.com
EU Reg. 100020201

Regional Head Office:
TÜV SÜD Asia Pacific Pte. Ltd.
25 Raffles Place, #11-0202
The Raffles City, Singapore 032522
TUV

CONTENTS

Steel Conduits

1-2

- BS 4568 Part 1 : 1970
- BS EN 50086-1 : 1994
- BS EN 50086-2 : 1996
- IEC 61386-1 : 2008

Fittings & Accessories

3-8

BOXES	- Circular, Small - Circular, Small (Special Deep)	- Circular, Large - Looping In
RINGS	- Extension Ring	
COVERS	- Ball & Socket, Earthed - For Circular Box Cover - Large - Dome Lid	- For Circular Box Cover - Small - Hook
RUBBER GASKETS	- For Circular Box - Small - For Circular Box - Large	
COUPLINGS	- Coupling - Long Nipple - 300mm Long	- Short Nipple - Flange Coupling With Lead Washer & Long Male Bush
BENDS	- Inspection Elbow - Inspection Tee	- Inspection Bend - 90° Normal Bend, Internal Thread
BUSHES	- Male Bush - Short - Female Bush	- Male Bush - Long
PLUGS	- Stopping Plug - Hexagonal Head - Stopping Plug - Slotted Head	
REDUCERS	- Reducer	
LOCKNUT	- Hexagonal Locknut - Light - Hexagonal Locknut - Brass	- Hexagonal Locknut - Heavy - Locking Ring
SADDLES	- Half Saddle - Distance Saddle	- Plain Saddle - Bar Saddle
ADAPTOR	- Male Adaptor	- Female Adaptor

Adaptable Boxes

9

- ADAPTABLE BOXES

Switch & Socket Boxes

10

- SWITCH & SOCKET BOXES

Flexible Conduits

11

- FLEXIBLE CONDUITS

BURN A Global Brand Epitomizing Quality

THE QUALITY

BURN range of conduits and fittings listed in this brochure is manufactured by Royal Steel Industry Co., Ltd. under a certified BS EN ISO 9001 system. ISO 9001 system integrates a complete set of working practices encompassing disciplines and procedures that are carefully adhered to, from raw material inspection right through to the final dispatch.

To ensure similar quality products from our appointed suppliers, rigorous inspection procedures and controls are also applied.

Hence, all BURN products satisfy a uniform standard of quality and reliability.

STANDARDS

BURN products are manufactured in accordance with the following British Standards.

STEEL CONDUITS COMPLY WITH

- BS 4568 Part 1 : 1970, IEC 61386-1 : 2008
- BS EN 50086-1 : 1994
- BS EN 50086-2 : 1996

FITTINGS & ACCESSORIES COMPLY WITH

- BS 4568 Part 2 : 1970, IEC 61386-21 : 2004
- BS EN 50086-1 : 1994
- BS EN 50086-2 : 1996

FLEXIBLE CONDUIT MANUFACTURED TO

- BS 731 Part 1, IEC 61386-23 : 2004

SWITCH & SOCKET BOXES MANUFACTURED TO

- BS 4662

Also available :

- a) Rigid Steel Conduit to ANSI C80.1-1983 (UL E306029)
- b) Intermediate Metal Conduit to ANSI C80.6-1983 (UL E211593)
- c) Electrical Metallic Tubing to ANSI C80.3-1983 (UL E306028)

CONDUIT PRODUCT FEATURES

- Highest grade of steel for mechanical strength.
- Well-controlled internal beads essential for wire pulling and resistant to snagging.
- Threading in compliance to BS specification. The conduits are supplied with a coupling screwed on one end and a protective colour coded cap at the other end to prevent damage.
- Rigorous quality control procedures to ensure process and product consistency.

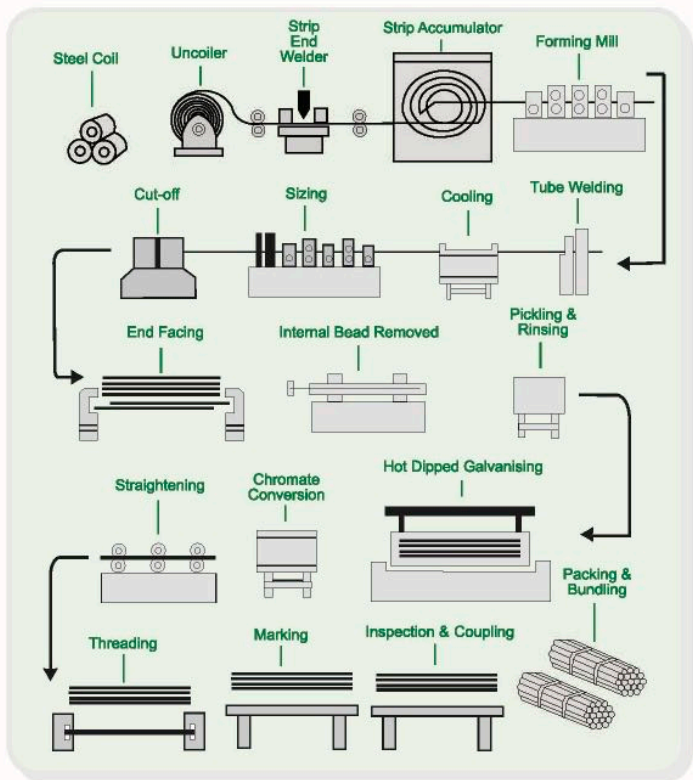
MAXIMUM CORROSION PREVENTION

All BURN conduits are hot dipped galvanised with more than 60 microns both inside and outside. To protect the zinc from white rust, the surface is treated with chromate solution. BURN conduits are of the highest grade able to withstand extreme conditions. They are ideal for heavy industries like oil and gas, petrochemical and infrastructure projects like airports, underground transport, seaports, commercial and residential buildings.

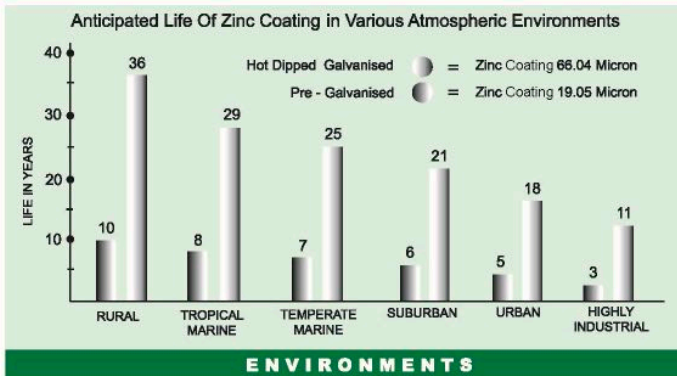
THE SERVICE

BURN is a global brand with dedicated and well trained sales personnel in technical knowledge. We are geared to provide sound product solutions to our clients worldwide. Together with our comprehensive Supply Chain Management, the group provides efficient freight shipping scheduling globally.

CONDUIT MANUFACTURING PROCESS



COMPARISON OF HOT DIPPED GALVANISED AND PRE-GALVANISED COATING IN VARIOUS ENVIRONMENTS



NOTE : REFERENCE
 1. Pre-Galvanised Zinc (ASTM A525 Coating Designation G90)
 2. Hot Dipped Galvanised After Fabrication ASTM A123 (Formerly A386)

BS 4568 Part 1 : 1970, BS EN 50086-1 : 1994, IEC 61386-1 : 2008

HOT DIPPED GALVANISED INSIDE AND OUTSIDE - CLASS 4

Item Code	Outside Diameter (mm)	Wall Thickness (mm)	Minimum Weight Per Length With Coupling (kgs)
C-BN-B020H	20	1.6 (+/-0.15mm)	2.90
C-BN-B025H	25	1.6 (+/-0.15mm)	3.80
C-BN-B032H	32	1.6 (+/-0.15mm)	5.50

- Standard Length : 3.75 metre
- Threaded both ends. One end fitted with coupling and the other protected by plastic end cap

CABLE CAPACITIES OF CONDUIT

The following tables provide calculation of the number of single-core p.v.c. insulated cables which can be located in various sizes of conduit. The tables deal with two particular cases.

i) Single-core p.v.c. insulated cables in straight runs not exceeding 3 metres in length.

ii) Single-core p.v.c. insulated cables in straight runs exceeding 3 metres in length or in runs of any length with bends or sets.

Type of conductor	Conductor cross-sectional area (mm ²)	Factor
Solid	1	22
	1.5	27
	2.5	39
Stranded	1.5	31
	2.5	43
	4	58
	6	88
	10	146

Table 1 Cable factors for short straight runs
These tables are based on the 16th edition of the I.E.E. Wiring Regulations Appendix 12.

Straight Runs Not Exceeding 3 Metres In Length

Refer to Table 1 to obtain the cable factor for each type of cable being used. Sum all the cable factors and compare with the conduit factors given in Table 2.

The conduit size which will accommodate the cables are those with a conduit factors equal to or greater than the sum of the cable factors.

Straight Runs Exceeding 3 Metres In Length Or Runs Of Any Length Incorporating Bends Or Sets

Refer to Table 3 to obtain the cable factor for each type of cable being used. Sum all the cable factors and compare with conduit factors given in Table 4 for the relevant length of run and the number of bends and sets in that run.

The conduit sizes which will accommodate the cables are those with a conduit factors equal to or greater than the sum of the cable factors.

Conduit Ø (mm)	Factor
16	290
20	460
25	800
32	1400

Table 2 Conduit factors for short straight runs

Type of conductor	Conductor cross-sectional area (mm ²)	Factor
Solid or Stranded	1	16
	1.5	22
	2.5	30
	4	43
	6	58
	10	105

Table 3 Cable factors for long straight runs, or runs incorporating bends.

SPACING OF SUPPORTS FOR CONDUITS

The following table provide guidance on the support spacing for conduits.

- This table is based on the 16th edition of the I.E.E. Wiring Regulations Appendix 11.
- These tables are for guidance only and account needs to be taken of future Wiring needs.

Nominal size of conduit (mm)	Maximum distance between supports	
	Horizontal runs (m)	Vertical runs (m)
16	0.75	1.0
17-25	1.75	2.0
26-40	2.0	2.25
Over 40	2.25	2.5

Length of run Metres	CONDUIT DIAMETER (MM)																			
	16				20				25				32							
	Straight				One bends				Two bends				Three bends				Four bends			
1	Cover by Tables 1 and 2				188	303	543	947	177	286	514	900	158	256	463	818	130	213	388	692
1.5	Cover by Tables 1 and 2				182	294	528	923	167	270	487	857	143	233	422	750	111	182	333	600
2	Cover by Tables 1 and 2				177	286	514	900	158	256	463	818	130	213	388	692	97	159	292	529
2.5	Cover by Tables 1 and 2				171	278	500	878	150	244	442	783	120	196	358	643	86	141	260	474
3	Cover by Tables 1 and 2				167	270	487	857	143	233	422	750	111	182	333	600				
3.5	179	290	521	911	162	263	475	837	136	222	404	720	103	169	311	563				
4	177	286	514	900	158	256	463	818	130	213	388	692	97	159	292	529				
4.5	174	282	507	889	154	250	452	800	125	204	373	667	91	149	275	500				
5	171	278	500	878	150	244	442	783	120	196	358	643	86	141	260	474				
6	167	270	487	857	143	233	422	750	111	182	333	600								
7	162	263	475	837	136	222	404	720	103	169	311	563								
8	158	256	463	818	130	213	388	692	97	159	292	529								
9	154	250	452	800	125	204	373	667	91	149	275	500								
10	150	244	442	783	120	196	358	643	86	141	260	474								

Table 4 Conduit factors for runs incorporating bends.

BOXES-CIRCULAR, SMALL



TERMINAL

Item Code	Size (mm)	Pack Qty (pcs)
BN-L101	20	100
BN-L301	25	100

Material : Malleable Iron

Finish : Hot Dipped Galvanised

- 60.3mm Internal Diameter, min 25mm deep for 20mm and 28mm deep for 25mm.

- Tapped M4 at 50.8 mm. With tapped hole in base for earthing screw.

- Supplied without covers or fixing screws unless ordered.



ANGLE

Item Code	Size (mm)	Pack Qty (pcs)
BN-L102	20	100
BN-L302	25	100



BACK OUTLET

Item Code	Size (mm)	Pack Qty (pcs)
BN-L120	20	100
BN-L320	25	100



THROUGH

Item Code	Size (mm)	Pack Qty (pcs)
BN-L103	20	100
BN-L303	25	100



TERMINAL WITH BACK OUTLET

Item Code	Size (mm)	Pack Qty (pcs)
BN-L121	20	100
BN-L321	25	100



TEE

Item Code	Size (mm)	Pack Qty (pcs)
BN-L104	20	100
BN-L304	25	100



ANGLE WITH BACK OUTLET

Item Code	Size (mm)	Pack Qty (pcs)
BN-L122	20	100
BN-L322	25	100



INTERSECTION

Item Code	Size (mm)	Pack Qty (pcs)
BN-L105	20	100
BN-L305	25	100



THROUGH WITH BACK OUTLET

Item Code	Size (mm)	Pack Qty (pcs)
BN-L123	20	100
BN-L323	25	100



BRANCH TWO WAY (U)

Item Code	Size (mm)	Pack Qty (pcs)
BN-L106	20	100
BN-L306	25	100



TEE WITH BACK OUTLET

Item Code	Size (mm)	Pack Qty (pcs)
BN-L124	20	100
BN-L324	25	100



TWIN THROUGH WAY (H)

Item Code	Size (mm)	Pack Qty (pcs)
BN-L107	20	100
BN-L307	25	100



BRANCH THREE WAY (Y)

Item Code	Size (mm)	Pack Qty (pcs)
BN-L109	20	100
BN-L309	25	100



INTERSECTION WITH BACK OUTLET

Item Code	Size (mm)	Pack Qty (pcs)
BN-L125	20	100
BN-L325	25	100

BOXES-CIRCULAR, LARGE

Material : Malleable Iron
 Finish : Hot Dipped Galvanised
 - 81mm Internal Diameter, 38mm deep
 - Tapped M4 at 71.5mm centres. With tapped hole in base for earthing screw.
 - Supplied without covers or fixing screws unless ordered.



TERMINAL

Item Code	Size (mm)	Pack Qty (pcs)
BN-L501	32	50



ANGLE

Item Code	Size (mm)	Pack Qty (pcs)
BN-L502	32	50



THROUGH

Item Code	Size (mm)	Pack Qty (pcs)
BN-L503	32	50



TEE

Item Code	Size (mm)	Pack Qty (pcs)
BN-L504	32	50



INTERSECTION

Item Code	Size (mm)	Pack Qty (pcs)
BN-L505	32	50



BRANCH TWO WAY (U)

Item Code	Size (mm)	Pack Qty (pcs)
BN-L506	32	50



TWIN THROUGH WAY (H)

Item Code	Size (mm)	Pack Qty (pcs)
BN-L507	32	50



BRANCH THREE WAY (Y)

Item Code	Size (mm)	Pack Qty (pcs)
BN-L509	32	50

BOXES-CIRCULAR, SMALL (SPECIAL DEEP)

Material : Malleable Iron
 Finish : Hot Dipped Galvanised
 - 60.3mm Internal Diameter, 62mm deep
 - Tapped M4 at 50.8mm centres. With tapped hole in base for earthing screw.
 - Supplied without covers or fixing screws unless ordered.



TERMINAL

Item Code	Size (mm)	Pack Qty (pcs)
BN-H116	20	50



ANGLE

Item Code	Size (mm)	Pack Qty (pcs)
BN-H117	20	50



THROUGH

Item Code	Size (mm)	Pack Qty (pcs)
BN-H118	20	50



TEE

Item Code	Size (mm)	Pack Qty (pcs)
BN-H119	20	50



INTERSECTION

Item Code	Size (mm)	Pack Qty (pcs)
BN-H120	20	50

BOXES-LOOPING IN

Material : Malleable Iron
 Finish : Hot Dipped Galvanised



LOOPING IN BOX

Item Code	Size (mm)	Pack Qty (pcs)
BN-L110-1	for 20	100
BN-L110-2		100
BN-L110-3		100
BN-L110-4		100

RINGS



EXTENSION RING

Material : Malleable Iron
Finish : Hot Dipped Galvanised

Item Code	Size (mm)	Pack Qty (pcs)
BN-L111	for 20 & 25	100

Height : 38 mm

COVERS



BALL AND SOCKET, EARTHED

Material : Malleable Iron
Finish : Hot Dipped Galvanised

Item Code	Size (mm)	Pack Qty (pcs)
BN-D149	20	200
BN-D150	25	250

COVERS



DOME LID

Material : Malleable Iron
Finish : Hot Dipped Galvanised

Item Code	Size (mm)	Pack Qty (pcs)
BN-D146	20	200
BN-D145	25	200

RUBBER GASKET FOR CIRCULAR BOX - SMALL



Item Code	Size (mm)	Pack Qty (pcs)
BN-B191	for 20 & 25	2,000

RUBBER GASKET FOR CIRCULAR BOX - LARGE



Item Code	Size (mm)	Pack Qty (pcs)
BN-B199	32	1,000

CIRCULAR BOX COVER - SMALL

Material : Steel (1.2mm thick)
Finish : Hot Dipped Galvanised



Item Code	Size (mm)	Pack Qty (pcs)
BN-C291	for 20 & 25	1,000

Material : Steel (1.00mm thick)
Finish : Pre-Galvanised

Item Code	Size (mm)	Pack Qty (pcs)
BN-C191	for 20 & 25	1,000

COUPLING

COUPLING

Material : Steel
Finish : Hot Dipped Galvanised



Item Code	Size (mm)	Pack Qty (pcs)
BN-C140	20	1,000
BN-C141	25	500
BN-C142	32	400

CIRCULAR BOX COVER - LARGE

Material : Steel (1.2mm thick)
Finish : Hot Dipped Galvanised



Item Code	Size (mm)	Pack Qty (pcs)
BN-C299	32	500

Material : Steel (1.00mm thick)
Finish : Pre-Galvanised

Item Code	Size (mm)	Pack Qty (pcs)
BN-C199	32	500

SHORT NIPPLE

Material : Steel
Finish : Electro Galvanised



Item Code	Size (mm)	Pack Qty (pcs)
BN-B2033S	20	1,000
BN-B2536S	25	500

Material : Brass

Item Code	Size (mm)	Pack Qty (pcs)
BN-B2033	20	1,000
BN-B2536	25	500

HOOK

Material : Steel
Finish : Hot Dipped Galvanised



Item Code	Size (mm)	Pack Qty (pcs)
BN-D148	for 20 & 25	200

LONG NIPPLE - 300MM LONG

Material : Steel
Finish : Electro Galvanised



Item Code	Size (mm)	Pack Qty (pcs)
BN-BD20300	20	100
BN-BD25300	25	75
BN-BD32300	32	50

FLANGE COUPLING WITH LEAD WASHER & LONG MALE BUSH

Material : Malleable Iron (for Flange Coupling & Lead Washer)
 : Brass (Long Male Bush)
 Finish : Hot Dipped Galvanised (for Flange Coupling & Lead Washer)



Item Code	Size (mm)	Pack Qty (pcs)
BN-C220	20	250
BN-C225	25	200
BN-C232	32	100

BENDS

Material : Malleable Iron
 Finish : Hot Dipped Galvanised



INSPECTION ELBOW

Item Code	Size (mm)	Pack Qty (pcs)
BN-C121	20	200
BN-C221	25	100
BN-C321	32	50



INSPECTION BEND

Item Code	Size (mm)	Pack Qty (pcs)
BN-C122	20	200
BN-C222	25	100
BN-C322	32	50



INSPECTION TEE

Item Code	Size (mm)	Pack Qty (pcs)
BN-C123	20	100
BN-C223	25	100
BN-C323	32	50

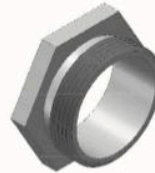


90° NORMAL BEND, INTERNAL THREAD

Material : Steel
 Finish : Hot Dipped Galvanised

Item Code	Size (mm)	Pack Qty (pcs)
BN-C124	20	200
BN-C224	25	100
BN-C324	32	40

BUSHES



BRASS MALE BUSH - SHORT

Item Code	Size (mm)	Pack Qty (pcs)
BN-BB120S	20	2,000
BN-BB125S	25	1,000
BN-BB132S	32	1,000



BRASS MALE BUSH - LONG

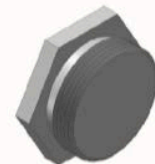
Item Code	Size (mm)	Pack Qty (pcs)
BN-BB120L	20	2,000
BN-BB125L	25	1,000
BN-BB132L	32	500



BRASS FEMALE BUSH

Item Code	Size (mm)	Pack Qty (pcs)
BN-B272	20	4,000
BN-B273	25	2,000
BN-B274	32	2,000

PLUGS



STOPPING PLUG - HEXAGONAL HEAD

Material : Brass

Item Code	Size (mm)	Pack Qty (pcs)
BN-BS120S	20	500
BN-BS125S	25	500
BN-BS132S	32	200

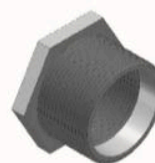


STOPPING PLUG - SLOTTED HEAD

Material : Brass

Item Code	Size (mm)	Pack Qty (pcs)
BN-BS120R	20	2,000
BN-BS125R	25	1,000
BN-BS132R	32	500

REDUCERS



REDUCER

Material : Brass

Item Code	Size (mm)	Pack Qty (pcs)
BN-B401	20 x 25	1,000
BN-B402	32 x 25	500
BN-B403	20 x 32	400

LOCKNUT

HEXAGONAL LOCKNUT - LIGHT

Material : Steel

Finish : Hot Dipped Galvanised



Item Code	Size (mm)	Pack Qty (pcs)
BN-L181S	20 x 3 (t)	3,000
BN-L182S	25 x 3 (t)	2,000
BN-L183S	32 x 3 (t)	1,500

Finish : Electro-Galvanised

Item Code	Size (mm)	Pack Qty (pcs)
BN-L181EG	20 x 3 (t)	3,000
BN-L182EG	25 x 3 (t)	2,000
BN-L183EG	32 x 3 (t)	1,500

HEXAGONAL LOCKNUT - HEAVY

Material : Malleable Iron



Finish : Hot Dipped Galvanised

Item Code	Size (mm)	Pack Qty (pcs)
BN-L184S	20 x 6 (t)	2,000
BN-L185S	25 x 6 (t)	1,000
BN-L186S	32 x 6 (t)	1,000

Finish : Electro-Galvanised

Item Code	Size (mm)	Pack Qty (pcs)
BN-L184EG	20 x 6 (t)	2,000
BN-L185EG	25 x 6 (t)	1,000
BN-L186EG	32 x 6 (t)	1,000

HEXAGONAL LOCKNUT

Material : Brass



Item Code	Size (mm)	Pack Qty (pcs)
BN-BLN20	20	4,000
BN-BLN25	25	3,000
BN-BLN32	32	2,000

LOCKING RING

Material : Brass



Item Code	Size (mm)	Pack Qty (pcs)
BN-BLR20	20	3,000
BN-BLR25	25	2,000
BN-BLR32	32	1,000

SADDLES

HALF SADDLE

Material : Steel

Finish : Hot Dipped Galvanised



Item Code	Size (mm)	Pack Qty (pcs)
BN-SPH20HS	20	2,000
BN-SPH25HS	25	2,000
BN-SPH32HS	32	1,000

Material : Steel

Finish : Electro-Galvanised

Item Code	Size (mm)	Pack Qty (pcs)
BN-SPH20	20	2,000
BN-SPH25	25	2,000
BN-SPH32	32	1,000

PLAIN SADDLE

Material : Steel

Finish : Hot Dipped Galvanised



Item Code	Size (mm)	Pack Qty (pcs)
BN-SPO20HS	20	2,000
BN-SPO25HS	25	2,000
BN-SPO32HS	32	1,000

Material : Steel

Finish : Electro-Galvanised

Item Code	Size (mm)	Pack Qty (pcs)
BN-SPO20	20	2,000
BN-SPO25	25	2,000
BN-SPO32	32	1,000

DISTANCE SADDLE

Material : Malleable Iron (for base)

: Steel (for cover)

Finish : Hot Dipped Galvanised

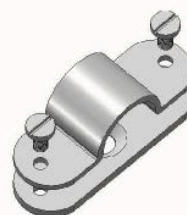


Item Code	Size (mm)	Pack Qty (pcs)
BN-SP20	20	500
BN-SP25	25	250
BN-SP32	32	200

BAR SADDLE

Material : Steel

Finish : Hot Dipped Galvanised



Item Code	Size (mm)	Pack Qty (pcs)
BN-SPS20HS	20	1,000
BN-SPS25HS	25	1,000
BN-SPS32HS	32	500

Material : Steel

Finish : Electro-Galvanised

Item Code	Size (mm)	Pack Qty (pcs)
BN-SPS20	20	1,000
BN-SPS25	25	1,000
BN-SPS32	32	500

ADAPTOR

MALE ADAPTOR WITH SCREW

Material : Brass



Item Code	Size (mm)	Pack Qty (pcs)
BN-BB20MS	20mm	1,000
BN-BB25MS	25mm	400
BN-BB32MS	32mm	200
BN-BB40MS	40mm	120
BN-BB50MS	50mm	80

FEMALE ADAPTOR WITH SCREW

Material : Brass



Item Code	Size (mm)	Pack Qty (pcs)
BN-BB20FS	20mm	1,000
BN-BB25FS	25mm	400
BN-BB32FS	32mm	200
BN-BB40FS	40mm	120
BN-BB50FS	50mm	80

MALE ADAPTOR WITHOUT SCREW

Material : Brass



Item Code	Size (mm)	Pack Qty (pcs)
BN-BB20M	20mm	1,000
BN-BB25M	25mm	400
BN-BB32M	32mm	200
BN-BB40M	40mm	120
BN-BB50M	50mm	80

FEMALE ADAPTOR WITHOUT SCREW

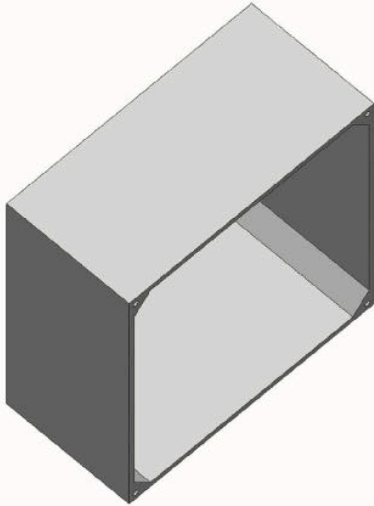
Material : Brass



Item Code	Size (mm)	Pack Qty (pcs)
BN-BB20F	20mm	1,000
BN-BB25F	25mm	400
BN-BB32F	32mm	200
BN-BB40F	40mm	120
BN-BB50F	50mm	80

ADAPTABLE BOXES

ADAPTABLE BOX WITHOUT SCREW & COVER

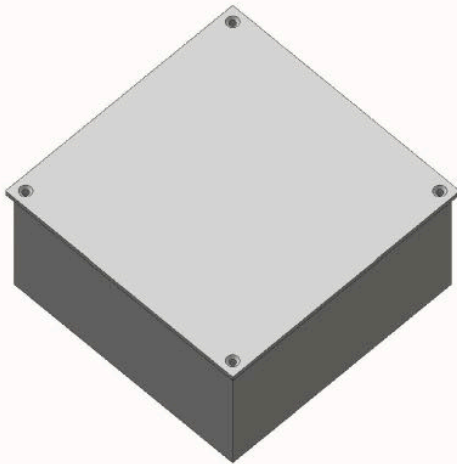


Material : Cast Iron

Finish : Hot Dipped Galvanised

Item Code	Size (mm)	Pack Qty (pcs)
BN-A152	75 x 75 x 50	50
BN-A153	100 x 100 x 50	40
BN-A475	100 x 100 x 75	20
BN-A154	150 x 150 x 75	10
BN-A155	225 x 225 x 75	5
BN-A156	300 x 300 x 75	5

ADAPTABLE BOX WITH SCREW & COVER



Material : Cast Iron (for adaptable box)
Steel (for cover)

Finish : Hot Dipped Galvanised

Item Code	Size (mm)	Pack Qty (sets)
BN-S152H	75 x 75 x 50	50
BN-S153H	100 x 100 x 50	40
BN-S475H	100 x 100 x 75	20
BN-S154H	150 x 150 x 75	10
BN-S155H	225 x 225 x 75	5
BN-S156H	300 x 300 x 75	5

Material : Steel

Finish : Hot Dipped Galvanised

Item Code	Size (mm)	Pack Qty (sets)
BN-KB075-37-HC	75 x 75 x 37.5	50
BN-KB075-50-HC	75 x 75 x 50	50
BN-KB100-37-HC	100 x 100 x 37.5	30
BN-KB100-50-HC	100 x 100 x 50	30
BN-KB100-75-HC	100 x 100 x 75	20
BN-KB150-75-HC	150 x 150 x 75	10
BN-KB150-100-HC	150 x 150 x 100	10
BN-KB225-100-HC	225 x 225 x 100	5
BN-KB300-100-HC	300 x 300 x 100	5

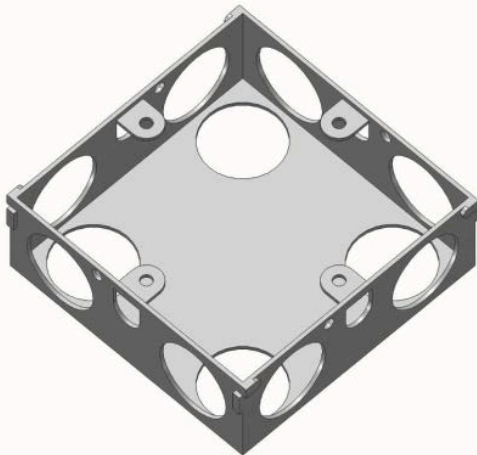
Material : Steel

Finish : Pre-Galvanised

Item Code	Size (mm)	Pack Qty (sets)
BN-KB075-37-SC	75 x 75 x 37.5	50
BN-KB075-50-SC	75 x 75 x 50	50
BN-KB100-37-SC	100 x 100 x 37.5	30
BN-KB100-50-SC	100 x 100 x 50	30
BN-KB100-75-SC	100 x 100 x 75	20
BN-KB150-75-SC	150 x 150 x 75	10
BN-KB150-100-SC	150 x 150 x 100	10
BN-KB225-100-SC	225 x 225 x 100	5
BN-KB300-100-SC	300 x 300 x 100	5

SWITCH & SOCKET BOXES

ONE GANG



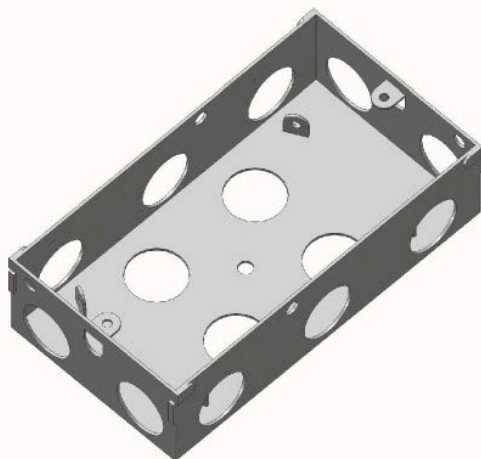
Material : Steel Plate

Finish : Pre-Galvanised

Item Code	Size (mm) (l x w x h x t)	K/O's	Pack Qty (pcs)
BN-P12510	70 x 70 x 25 x 1.0	12 x 20mm	200
BN-P13508	70 x 70 x 35 x 0.8	7 x 20mm, 4 x 25mm	200
BN-P13509	70 x 70 x 35 x 0.9	7 x 20mm, 4 x 25mm	200
BN-P13510	70 x 70 x 35 x 1.0	7 x 20mm, 4 x 25mm	200
BN-P13511	70 x 70 x 35 x 1.1	7 x 20mm, 4 x 25mm	200
BN-P13512	70 x 70 x 35 x 1.2	7 x 20mm, 4 x 25mm	200
BN-P14708	70 x 70 x 47 x 0.8	9 x 20mm, 1 x 25mm	200
BN-P14709	70 x 70 x 47 x 0.9	9 x 20mm, 1 x 25mm	200
BN-P14710	70 x 70 x 47 x 1.0	9 x 20mm, 1 x 25mm	200
BN-P14711	70 x 70 x 47 x 1.1	9 x 20mm, 1 x 25mm	200
BN-P14712	70 x 70 x 47 x 1.2	9 x 20mm, 1 x 25mm	200

* All above come with one brass earth terminal, one adjustable and three fixed lug

TWO GANG



Material : Steel Plate

Finish : Pre-Galvanised

Item Code	Size (mm) (l x w x h x t)	K/O's	Pack Qty (pcs)
BN-P22510	130 x 70 x 25 x 1.0	16 x 20mm	100
BN-P23508	130 x 70 x 35 x 0.8	13 x 20mm, 3 x 25mm	100
BN-P23509	130 x 70 x 35 x 0.9	13 x 20mm, 3 x 25mm	100
BN-P23510	130 x 70 x 35 x 1.0	13 x 20mm, 3 x 25mm	100
BN-P23511	130 x 70 x 35 x 1.1	13 x 20mm, 3 x 25mm	100
BN-P23512	130 x 70 x 35 x 1.2	13 x 20mm, 3 x 25mm	100
BN-P24708	130 x 70 x 47 x 0.8	10 x 20mm, 6 x 25mm	100
BN-P24709	130 x 70 x 47 x 0.9	10 x 20mm, 6 x 25mm	100
BN-P24710	130 x 70 x 47 x 1.0	10 x 20mm, 6 x 25mm	100
BN-P24711	130 x 70 x 47 x 1.1	10 x 20mm, 6 x 25mm	100
BN-P24712	130 x 70 x 47 x 1.2	10 x 20mm, 6 x 25mm	100

* All above come with one brass earth terminal, one adjustable and one fixed lug

FLEXIBLE CONDUITS**FLEXIBLE CONDUIT WITH BLACK PVC**

Material : Steel (for Flexible Conduit)
 : PVC (for Sheath)
 Finish : Electro-Galvanised
 (for Flexible Conduit)

Item Code	Size (mm)	Pack Qty (metres)
BN-KSPS20	20	30 / Roll
BN-KSPS25	25	30 / Roll
BN-KSPS32	32	25 / Roll
BN-KSPS40	40	15 / Roll
BN-KSPS50	50	15 / Roll

FLEXIBLE CONDUIT WITHOUT BLACK PVC

Material : Steel
 Finish : Electro-Galvanised

Item Code	Size (mm)	Pack Qty (metres)
BN-KSM20	20	30 / Roll
BN-KSM25	25	30 / Roll
BN-KSM32	32	25 / Roll
BN-KSM40	40	15 / Roll
BN-KSM50	50	15 / Roll



- Changi Airport Line
- Dhoby Ghaut - Commercial Building
- Esplanade Mall
- Mass Rapid Transit - Circle Line
- MRT Boon Lay Extensions
- Nanyang Technological University
- Pfizer Asia Pacific Pte Ltd.
- Post Bank - Century Tower (52 Storey)
- Queensway Fire Station / Civil Defence
- The Highest Stock Exchange Building

United Arab Emirates

- Dubai International Financial Centre
- Mall of Emirates, Dubai
- Marina Mall, UAE
- Dubai Festival City
- Dubai International Airport Expansion
- Dubai Metro
- Yas Marina Circuit Abu Dhabi
- EMAL Abu Dhabi
- DIFC Gate Building, UAE
- Bridge Way Mixed Use Development Abu Dhabi
- Sky Towers Al Reem Island, UAE
- Burj Khalifa Tower, Dubai
- Emirates Engine Maintenance Centre, Dubai
- Reach British School, Abu Dhabi
- Al Sufouh Transit System, Dubai
- Health Point Hospital, Abu Dhabi
- Rolex Tower, Dubai

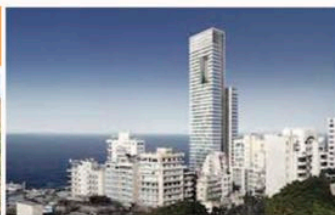


- Construction of Kahramaa Central Workshop
- Development of ABM Military College (Package-5)
- Marbu Headquarters Building at Energy City Plot F11 (2B+G+M+3 Office Building)
- Mall of Qatar
- New Doha Port Construction
- Construction of Package CP16 Utility Tunnel Control Centre & VIP Access Building at Lusail
- Q-Rail RLS UG
- Q-Tel I.T. Building, QT
- Qatar Armed Force Wireless Project
- Rumailah Hospital Renovations, QT
- Electronic War Centre at Doha Air Base, QT
- Doha International Airport Renovation Works
- Substation Projects for Kahramaa, State of Qatar

Lebanon



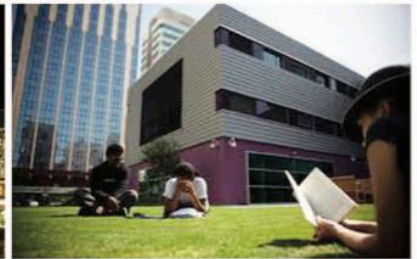
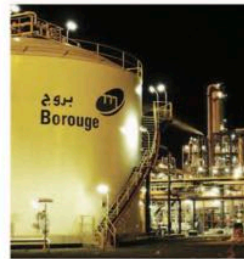
- Sky Gate Tower, Lebanon
- Plus Towers, Beirut



- Ansar Sports Stadium, Lebanon
- Zenith Tower, Lebanon
- Beirut City Centre (BCC)

Singapore

- World Trade Centre Upgrading Works
- City Square Mall
- BFC Marina Bay
- Credit Suisse @Serangoon
- Changi Prison Cluster A
- Marina Bay Sands IR
- Mass Rapid Transit - North East Line Stations
- Tuas Power Plant @Tuas South Ave 9 – Alstom
- ExxonMobil @Jurong Island
- Changi Prison
- SGH Pathology Bldg.
- A & A Suntec City
- Combined Cycle Plant Sembcogen CCP3 @Banyan
- 2M2P Science Park
- Lucky Tower Condo @57 Grange Rd.
- HDB Parkland Residence @Upper Serangoon Rd.
- HDB Punggol Drive / Punggol East Proj. C34
- Trex Proj. At Jurong Island
- Mega Yard At Tuas
- The Solaris At Fusionopolis



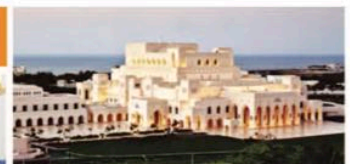
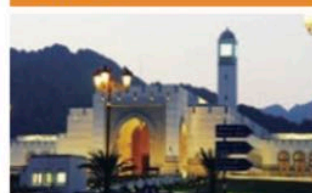
- Borouge 3, UAE
- Emirates Hangars, UAE
- BOP Fertil, UAE

- Shah Sulphur Station, UAE

Qatar

- 9 Nos Stores at Doha Naval Base, QT
- Oryx GTL Project at Raslaffan - QP, QT
- Qatar Islamic Museum
- Cardiology Centre at HMC, QT
- Hamad Medical City (2006 Asian Games Village), QT
- Qatar Olefin Project - QP
- City Centre Expansion Project, QT
- Q-Chem Laboratory Expansion Project - QP, QT
- Dukkan Hospital for Qatar Petroleum
- Doha Urban Pipe Relocation Project for Qatar Petroleum (QP)
- Integrated District Cooling Plant at Pearl Qatar
- Porto Arabia Project at Pearl Qatar Island
- New Training Centre at Dukhan - QP, QT
- New Maintenance Workshop for Rasgas - QP, QT
- Qatar Gas QG 3&4 Offshore Facilities Project - QP, QT
- The Development of Hamad Medical City Project, QT

Oman



- The Council of Oman (Majlis Oman)
- Royal Opera House, Muscat
- Carrefour Hypermarket at Salalah, Oman
- OTE - Showroom at Wattayah, Oman

Iraq

- Basra Sports Stadium, Iraq



BURN[®]

Conduit & Fittings



ROYAL STEEL INDUSTRY CO., LTD.

1/115 Moo. 2, T. Tasai, A. Muang Samutsakorn 74000 Thailand

Tel : +66 (34) 490100-2 Fax : +66 (34) 490103

E-mail : info@royalsteel.co.th

www.royalsteel.co.th

