



SECTION 7

CHANNEL & SUPPORT SYSTEMS

Unitrunk Intelok Channel is a strong, easy to erect support system, ideal for supporting cable trays, cable ladders, pipes and ducting and is adaptable for use in many other applications. The flanges on Intelok channel are serrated to give improved slip resistance over that of conventional 'strut' systems, particularly when Intelok channel nuts are used.

Intelok channels are made in deep, shallow and multiple combination profiles. Standard lengths are either 3 or 6 metres, with other lengths available to order. When used with our extensive range of brackets, an infinite variety of frameworks and structures can be created. Intelok channels conform to BS6946.

Unitrunk Intelok Channels are supplied in the following finishes

STRAIGHT CHANNEL

- Hot dip galvanized Structural Steel (Steel BS EN 10025-2 and Galvanising BS EN 1461:2009)
- Pre-Galvanised Structural Steel (Steel BS EN 10326)

BRACKETS

- Hot dip galvanized Mild Steel (Steel BS EN 10111 / BS EN 10130 and Galvanising BS EN 1461:2009)

STRAIGHT CHANNEL & BRACKET

- Stainless steel grade 1.4404 (316 marine) to BS EN 10088-2:2005

ACCREDITED TO THE FOLLOWING STANDARDS

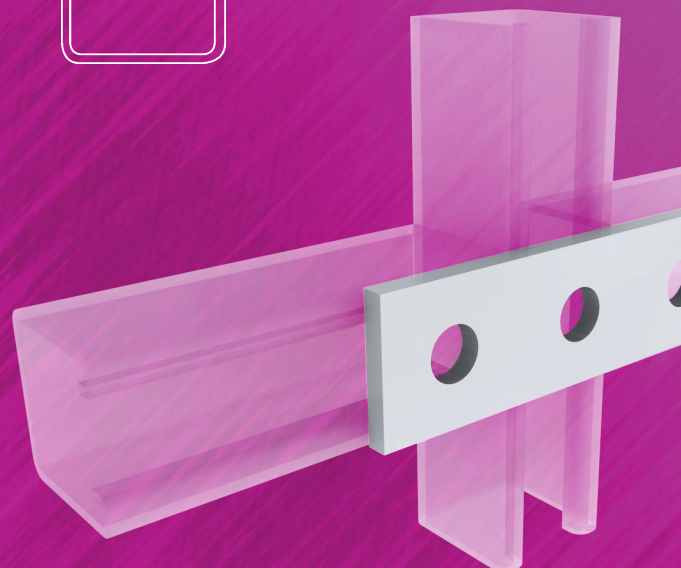


LUL ACCREDITATION ID:

1822

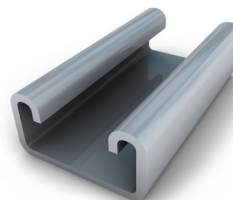
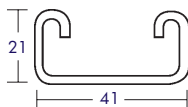
The safe loading figures are based on

- a) The x-x axis
- b) A simply supported beam
- c) Pre-galvanised steel - yield 250N/mm²
- d) A safety factor of 1.6 against yield



Shallow Channel

Ref.	Length	Finish
UC4121/3	3m	Galvanized to BS EN10346
UC4121/6	6m	Galvanized to BS EN10346
GAUC4121/3	3m	Hot Dipped to BS EN ISO 1461
GAUC4121/6	6m	Hot Dipped to BS EN ISO 1461

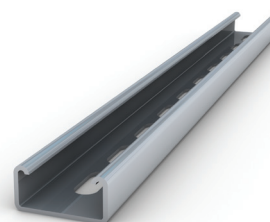
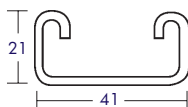


Span m	0.50	0.75	1.00	1.50	2.00	2.50	3.00
Deflection at load*mm	1.70	3.90	6.90	15.60	27.70	43.30	62.30
Safe UDL **kg	259	172	128	84	61	47	38

* Including weight of channel.
** Excluding weight of channel.

Slotted Shallow Channel

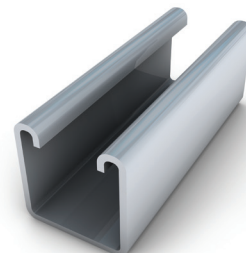
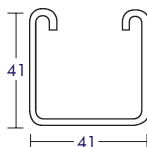
Ref.	Length	Finish
UC4121S/3	3m	Galvanized to BS EN10346
UC4121S/6	6m	Galvanized to BS EN10346
GAUC4121S/3	3m	Hot Dipped to BS EN ISO 1461
GAUC4121S/6	6m	Hot Dipped to BS EN ISO 1461



Span m	0.50	0.75	1.00	1.50	2.00	2.50	3.00
Deflection at load*mm	1.90	4.30	7.70	17.30	30.70	48.00	69.10
Safe UDL **kg	238	158	118	77	56	44	35

Deep Channel

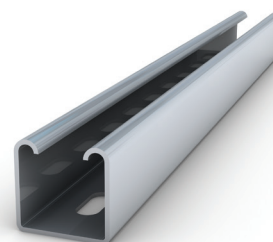
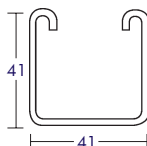
Ref.	Length	Finish
UC4141/3	3m	Galvanized to BS EN10346
UC4141/6	6m	Galvanized to BS EN10346
GAUC4141/3	3m	Hot Dipped to BS EN ISO 1461
GAUC4141/6	6m	Hot Dipped to BS EN ISO 1461



Span m	0.50	0.75	1.00	1.50	2.00	2.50	3.00
Deflection at load*mm	0.90	2.10	3.70	8.20	14.60	22.80	32.90
Safe UDL **kg	837	557	416	275	204	161	132

Slotted Deep Channel

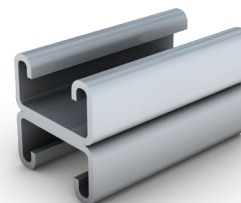
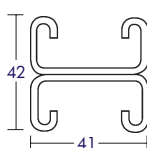
Ref.	Length	Finish
UC4141S/3	3m	Galvanized to BS EN10346
UC4141S/6	6m	Galvanized to BS EN10346
GAUC4141S/3	3m	Hot Dipped to BS EN ISO 1461
GAUC4141S/6	6m	Hot Dipped to BS EN ISO 1461



Span m	0.50	0.75	1.00	1.50	2.00	2.50	3.00
Deflection at load*mm	1.00	2.20	4.00	8.90	15.90	24.80	35.70
Safe UDL **kg	776	516	386	255	189	149	122

Back To Back Shallow Channel

Ref.	Length	Finish
UC4142/3	3m	Galvanized to BS EN10346
UC4142/6	6m	Galvanized to BS EN10346
GAUC4142/3	3m	Hot Dipped to BS EN ISO 1461
GAUC4142/6	6m	Hot Dipped to BS EN ISO 1461



Span m	0.50	0.75	1.00	1.50	2.00	2.50	3.00
Deflection at load*mm	1.00	2.30	4.10	9.20	16.40	25.60	36.80
Safe UDL **kg	736	489	365	240	177	138	112

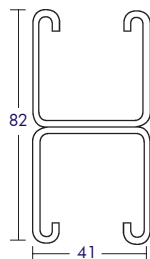
(Solid Channel in stock, slotted on request)

Back To Back Deep Channel

Ref.	Length	Finish
UC4182/3	3m	Galvanized to BS EN10346
UC4182/6	6m	Galvanized to BS EN10346
UC418S/3	3m	Galvanized to BS EN10346 (Slotted)
UC418S/6	6m	Galvanized to BS EN10346 (Slotted)
GAUC4182/3	3m	Hot Dipped to BS EN ISO 1461
GAUC4182/6	6m	Hot Dipped to BS EN ISO 1461

Span m	0.50	0.75	1.00	1.50	2.00	2.50	3.00
Deflection at load*mm	0.50	1.10	2.00	4.60	8.20	12.80	18.40
Safe UDL **kg	2372	1579	1186	784	583	462	380

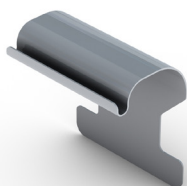
(Solid Channel in stock, slotted on request)



Tray to Channel Klip

Ref. CHTR 25 (KLMR)

Ref. CHTR 50 (KLHR)



Basket to Channel clip

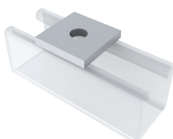
Ref. UFC41M



GA Standard Finish on Channel Brackets

Square Plate

Ref.	Size
325AJ03	6mm
325AJ05	8mm
325AJ07	10mm
325AJ10	12mm



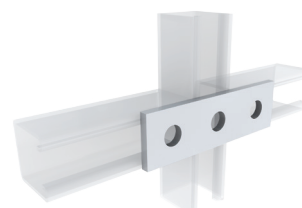
Two Hole Plate

Ref.325AD11



Three Hole Plate

Ref.325AC11



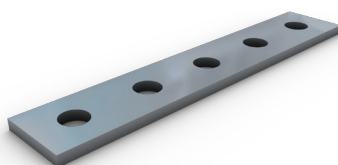
Four Hole Plate

Ref.325AC13



Five Hole Plate

Ref.325AY10



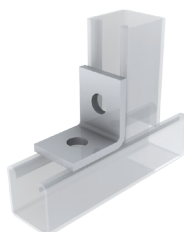
L Bracket

Ref.325AG10



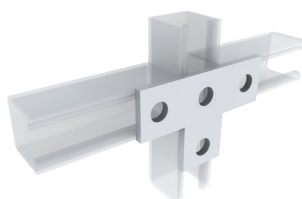
Right Angle Bracket

Ref.325AS10



T Bracket

Ref.325AF13



Right Angle Bracket

Ref.325AC09



CHANNEL & SUPPORT SYSTEMS



Standard Finish on Channel Brackets

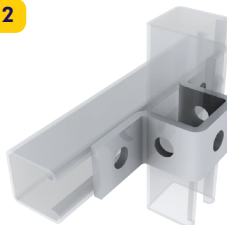
Right Angle Bracket

Ref.325AD10



Deep 'U' Bracket

Ref.325AJ12



Right Angle Bracket

Ref.325AC10



Right Angle Bracket

Ref.325AE10



Right Angle Bracket

Ref.325AE11



Right Angle Shelf Bracket

Ref.325AE12



Right Angle Bracket

Ref.325AQ10



Right Angle Bracket

Ref.325AQ11



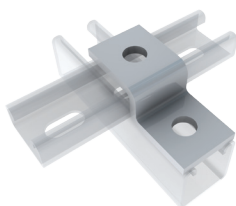
Right Angle Bracket

Ref.325AQ12



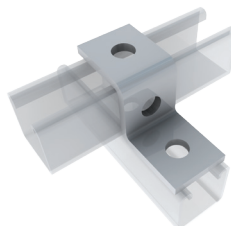
Shallow Z Bracket

Ref.325AD28



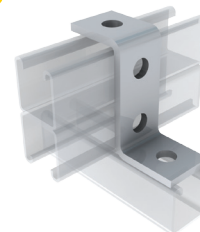
Deep Z Bracket

Ref.325AC12



Multiple Z Bracket

Ref.325AU10



Back to Back Bracket

Ref.325AT11



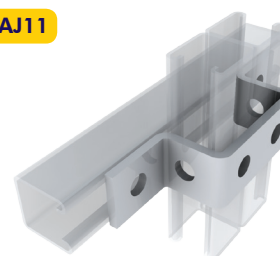
'W' Shaped Deep Bracket

Ref.325AU15



Double Channel Bracket

Ref.325AJ11



Standard
Trunking

Multi
Compartment
Trunking

Lighting
Trunking

Uniklip
Cable Tray

Speedway
Cable Ladder

Cable Basket
Systems

Channel &
Support

Floor
Trunking

Bench Outlet
& Perimeter
Trunking

Steel Conduit
(Class 4)

Innovative
Design
Solutions

Accessories
& Supports

Index

CHANNEL & SUPPORT SYSTEMS



Standard Finish on Channel Brackets

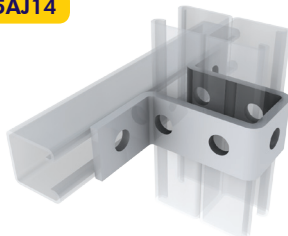
Shallow 'U' Bracket

Ref.325AJ13



Multi-Channel Bracket

Ref.325AJ14



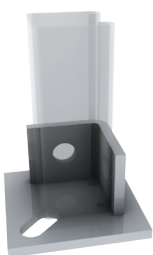
Single Channel Base Plate

Ref.325AR10



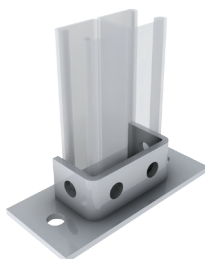
Single Channel Base Plate

Ref.325AN10



Double Channel Base Plate

Ref.325AT10



Two Leg Wing Fitting

Ref.325AV10



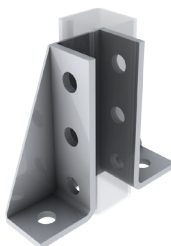
Three Leg Wing Fitting

Ref.325AV09



Wing Fitting with Gussets

Ref.325AW01



3 Way Corner Bracket

Ref.325AV02



Double Channel Wing Fitting

Ref.325AW02



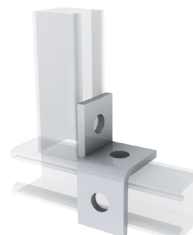
Channel Support Bracket R/H

Ref.325AG16



Channel Support Bracket L/H

Ref.325AG15



Channel Support Bracket

Ref.325AF10



L/H Channel Support Bracket

Ref.325AF11



R/H Channel Support Bracket

Ref.325AF12



CHANNEL & SUPPORT SYSTEMS



Standard Finish on Channel Brackets

45° Angle Bracket

Ref.325AF14



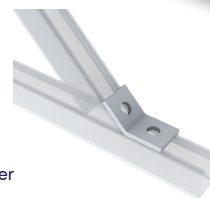
Acute Angle Bracket 45°

Ref.325AH11



Obtuse Angle Bracket 45°

Ref.325AD17



Other angles to Order

Shallow External Connector

Ref.325AK11



Shallow Connector

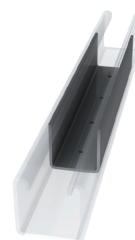
Ref.336AB07

M10 setscrews supplied separately.



Deep Connector

Ref.336AB08



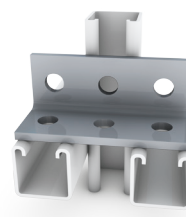
Deep External Connector

Ref.325AK10



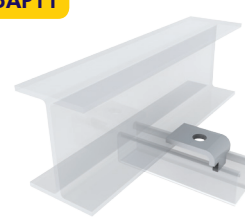
Cross Support Bracket

Ref.325AB10



Beam Clamp

Ref.325AP11

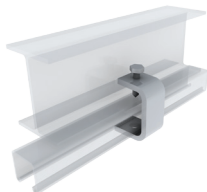


Beam Clamp

Ref.325AX10

Including M12x40 Cone point screw

For Flange thickness up to 18mm.

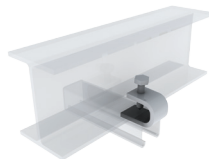


Beam Clamp

Ref.325AX11

Including M12x40 Cone point screw

For Flange thickness up to 17mm.



Beam Clamp (Deep Back to Back Window)

Ref.325AL09

Including M10x40 Cone point screw

For Flange thickness up to 15mm.

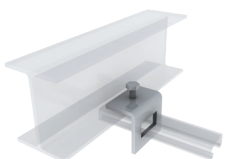


Beam Clamp (Shallow Channel)

Ref.325AL11

Including cone point set screw.

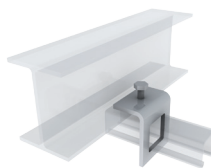
For Flange thickness up to 15mm.



Beam Clamp (Deep Channel)

Ref.325AL10

Including cone point set screw.

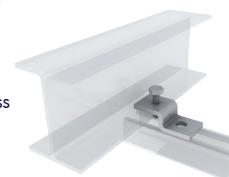


Beam Clamp

Ref.325AP10

Including cone point set screw.

For Flange thickness up to 17mm.



Standard Trunking

Multi Compartment Trunking

Lighting Trunking

Uniklip Cable Tray

Speedway Cable Ladder

Cable Basket Systems

Channel & Support

Floor Trunking

Bench Outlet & Perimeter Trunking

Steel Conduit (Class 4)

Innovative Design Solutions

Accessories & Supports

Index



Standard Finish on Channel Brackets

Beam Clamp (Back to Back Deep Channel)

Ref. 325AM12

Supplied singly
with nuts, bolts
and washers.

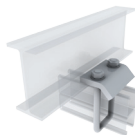


Heavy Duty Beam Clamp (Back to Back Deep Channel)

Ref. 325AM13*

Ref. 325AM14**

*Up to 25mm flange range.
**25-40mm flange range.

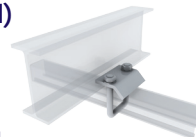


Beam Clamp (Deep Channel)

Ref. 325AM10

25mm flange range.

Also suitable for shallow
channel up to 25mm.



'Z' Purlin Clip (M10 Hole)

Ref. 389AH10



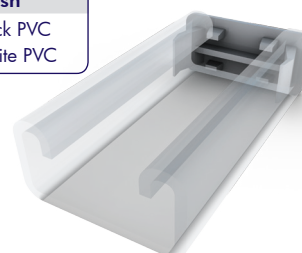
Cone Pointed Bolts

Ref.	Thread Size
UCM10/CPB	M10x40



End Cap (Shallow)

Ref.	Finish
325AA11	Black PVC
325AA13	White PVC



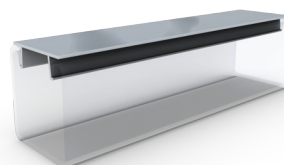
End Cap (Deep)

Ref.	Finish
325AA10	Black PVC
325AA12	White PVC



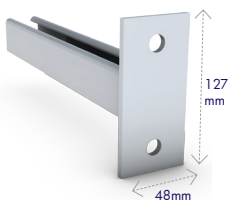
Cover Strip

Ref.	Length	Finish
339AA10	3m long	White PVC (Available in black to special order)
339AB10	3m long	Pre-Galvanised



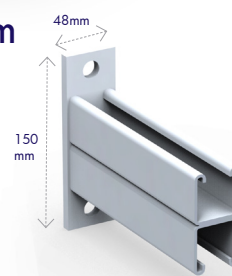
Single Channel Cantilever Arm

Ref.	Product	Arm Length
CARMSCP150GM	2 Hole	150mm
CARMSCP300GM	2 Hole	300mm
CARMSCP450GM	2 Hole	450mm
CARMSCP600GM	2 Hole	600mm
CARMSCP750GM	2 Hole	750mm
CARMSCP900GM	2 Hole	900mm



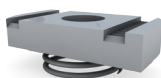
Back to Back Cantilever Arm

Ref.	Product	Arm Length
CARMBBP150GM	2 Hole	150mm
CARMBBP300GM	2 Hole	300mm
CARMBBP450GM	2 Hole	450mm
CARMBBP600GM	2 Hole	600mm
CARMBBP750GM	2 Hole	750mm
CARMBBP900GM	2 Hole	900mm



Short Spring Channel Nuts

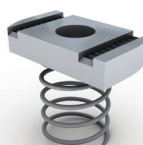
Ref.	Thread
UCM6/S	M6
UCM8/S	M8
UCM10/S	M10
UCM12/S	M12



Sold in 100's

Long Spring Channel Nuts

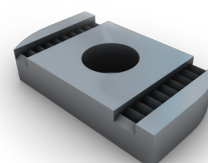
Ref.	Thread
UCM6/L	M6
UCM8/L	M8
UCM10/L	M10
UCM12/L	M12



Sold in 100's

Channel Nuts Less Spring

Ref.	Thread
UCM6/N	M6
UCM8/N	M8
UCM10/N	M10
UCM12/N	M12



Sold in 100's

**DON'T FORGET
THE NUTS &
BOLTS OF IT...**

**REMEMBER TO CHECK
SECTION 12**
**For all your Accessories
& Supports needs**

SEE PAGE 154



visit online: uk **unitrunk.co.uk** ireland **unitrunk.ie**

Standard
Trunking

Multi
Compartment
Trunking

Lighting
Trunking

Uniklip
Cable Tray

Speedway
Cable Ladder

Cable Basket
Systems

Channel &
Support

Floor
Trunking

Bench Outlet
& Perimeter
Trunking

Steel Conduit
(Class 4)

Innovative
Design
Solutions

Accessories
& Supports

Index

UNITRUNK CASE STUDY



INNOVATION FOR THE PREMIER LEAGUE



Very visible from the exterior of the building so, for a practical and aesthetic solution, we used risers of Unitrunk's UniKlip perforated steel cable tray with lids



Dale Robinson, Contracts Manager, Direct Technology UK

Newcastle United's St James's Park stadium is one of the city's most iconic structures. Improvement to the stadium's lighting was required, due to new F.A. specifications for television broadcast. By having a glass cantilever roof, restrictions to loading were necessary and the need to protect the stadium's aesthetics were addressed by contractor, Direct Technology UK, by using Unitrunk's Rapid Installation System (RIS), cable tray and cable basket.

The project began at the height of the football season, with work scheduled around fixtures while ensuring that existing floodlights remained operational on match days. Unitrunk's Rapid Installation Systems (RIS) products ensured installation speed and flexibility, helping the contractor complete the installation on schedule.



PRODUCTS

- Cable Basket
- Heavy Duty Galvanised After Tray
- UniKlip Pre Galv Tray
- Tray Lids