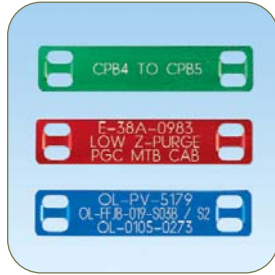
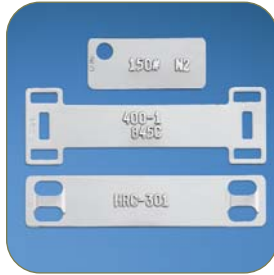


PERMANENT IDENTIFICATION

Panduit offers the widest range of permanent identification solutions in the industry to withstand the test of time and provide legibility in harsh environments. Safe, quick, and easy to install, Panduit permanent identification solutions include stainless steel and aluminum marker plates, tags, marking tools and ties to deliver improved productivity and workplace safety.



- **Factory Custom Marking Service** creates embossed or laser etched metal plates, tags, and ties to speed installation time and reduce labor costs
- **Portable on-site marking tools** for quick and easy identification on demand
- **Large identification selection** delivers maximum design flexibility to match your specific application requirements
- **Optimized for easy use** with Panduit self-locking stainless steel and aluminum ties; for details, refer to Pan-Steel® System Section B3

Panduit continues to design permanent identification products for harsh environments by addressing customer problems with innovative solutions and reliable tooling to achieve lowest installed cost.

A.
System
Overview

B1.
Cable
Ties

B2.
Cable
Accessories

B3.
Stainless
Steel
Ties

C1.
Wiring
Duct

C2.
Surface
Raceway

C3.
Abrasion
Protection

C4.
Cable
Management

D1.
Terminals

D2.
Power
Connectors

D3.
Grounding
Connectors

E1.
Labeling
Systems

E2.
Labels

E3.
Pre-Printed
& Write-On
Markers

E4.
Permanent
Identification

E5.
Lockout/
Tagout
& Safety
Solutions

F.
Index

A. System Overview

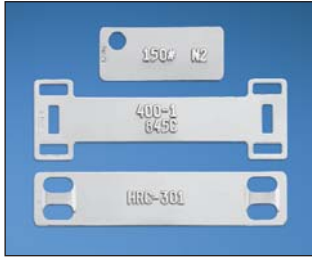
Panduit Factory Custom Marking Service

B1. Cable Ties

Panduit factory custom marking service simplifies identification with high quality, made-to-order custom embossed marker plates and tags or laser etched cable ties, marker plates, and tags. Panduit offers rapid direct shipment with fast turn around on custom marking orders worldwide. Work with Panduit to create an effectively identified workplace.

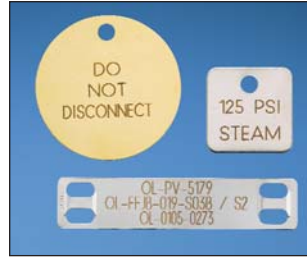
B2. Cable Accessories

EMBOSSING SERVICE



- Used on rectangular metal marker plates and tags which are a maximum of .020 inches (.5mm) thick and minimum .38 inches (10mm) width
- Excellent for applications that are exposed to dirt and paint
- Upper case “raised” character
- Alphanumeric and sequential numbering

LASER MARKING SERVICE



- Used on all metal marker plates, tags, and cable ties
- BOLD block letters
- Upper and lower case character capability
- Ability to create text and graphics
- Alphanumeric and sequential numbering

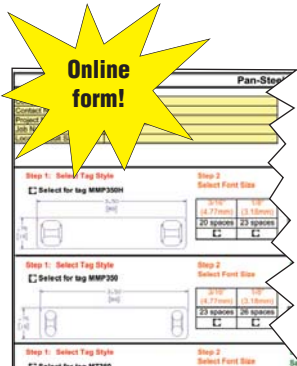
B3. Stainless Steel Ties

C1. Wiring Duct

C2. Surface Raceway

C3. Abrasion Protection

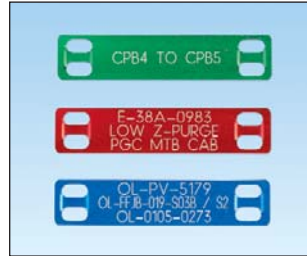
C4. Cable Management



Online form!

To select and order custom laser and embossed marker plates and tags:

Use on-line order form (C2-0677) at www.panduit.com/permanentID to select the proper marker plate or tag for your application. Email order form to your Authorized Panduit Distributor for order placement or contact Panduit Customer Service for assistance.



Character sizes available:

- 1/8 inches (3.18mm) – For high character volume tags
- 3/16 inches (4.77mm) – The most common size
- 1/4 inches (6.35mm) – Larger font for greater flexibility
- 5/16 inches (7.94mm) – Maximum visibility for tags requiring only a few characters.

D1. Terminals

D2. Power Connectors

D3. Grounding Connectors

E1. Labeling Systems

E2. Labels

E3. Pre-Printed & Write-On Markers

E4. Permanent Identification

E5. Lockout/Tagout & Safety Solutions

F. Index



Panduit offers a full line of labeling products, software and printers to assist you with your labeling requirements.

See pages E1.0 – E2.30.



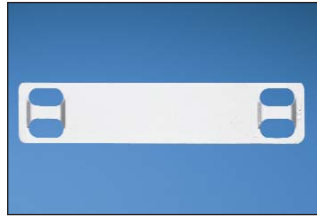
Panduit permanent identification products are optimized for easy use with Panduit self-locking stainless steel and aluminum ties. For details, refer to Pan-Steel® System Section B3.

Stainless Steel and Brass Marker Plates and Tags

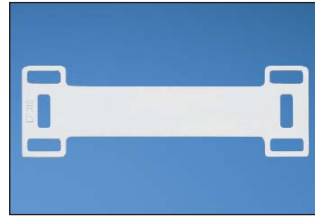
- Provides permanent identification of pipes, conduit, valves, cables and equipment in harsh environments
- Designed for use with Panduit® Pan-Steel® Stainless Steel Cable Ties for fast installation at lowest installed cost
- All marker plates/tags can be embossed or laser etched with Panduit Factory Custom Marking Service
- For on-site custom marking see page E4.6
- Designated plates feature easy feed design with a raised slot to simplify cable tie installation and improve productivity



MMP350-C



MMP350H-C



MMP350DB-C



MMP350W38-C



MMP172-C



MMP172W38-C



MMP350W17-Q

| Part Number | Material | Color | Length/ Diameter | | Width | | Custom Marking Parameters* | | Used with Pan-Steel® Cable Ties** | Thickness | | Std. Pkg. Qty. | Std. Ctn. Qty. |
|------------------------|---------------------|---------|---------------------|---------------------|---------|------|---|-----------------------|---|-----------|------|----------------------|----------------------|
| | | | In. | mm | In. | mm | Max. 3/16" (4.77mm) Character Per Line | Max. Lines of Text | | In. | mm | | |
| | | | MMP350-C‡ | 304 Stainless Steel | Natural | 3.50 | 89.0 | 0.75 | | 19.0 | 23 | | |
| MMP350-C316‡ | 316 Stainless Steel | Natural | 3.50 | 89.0 | 0.75 | 19.0 | 23 | 3 | MLT-S | 0.010 | 0.25 | 100 | 1000 |
| MMP350H-C‡ | 304 Stainless Steel | Natural | 3.50 | 89.0 | 0.75 | 19.0 | 20 | 3 | MLT-H | 0.010 | 0.25 | 100 | 1000 |
| MMP350H-C316‡ | 316 Stainless Steel | Natural | 3.50 | 89.0 | 0.75 | 19.0 | 20 | 3 | MLT-H | 0.010 | 0.25 | 100 | 1000 |
| MMP350DB-C‡ | 304 Stainless Steel | Natural | 3.50 | 89.0 | 1.12 | 29.0 | 20 | 3 | MLT-H | 0.015 | 0.38 | 100 | 1000 |
| MMP350DB-C316‡ | 316 Stainless Steel | Natural | 3.50 | 89.0 | 1.12 | 29.0 | 20 | 3 | MLT-H | 0.015 | 0.38 | 100 | 1000 |
| MMP350W38-C‡ | 304 Stainless Steel | Natural | 3.50 | 89.0 | 0.38 | 10.0 | 23 | 1 | MLT-S | 0.010 | 0.25 | 100 | 1000 |
| MMP350W38-C316‡ | 316 Stainless Steel | Natural | 3.50 | 89.0 | 0.38 | 10.0 | 23 | 1 | MLT-S | 0.010 | 0.25 | 100 | 1000 |
| MMP172-C‡ | 304 Stainless Steel | Natural | 1.72 | 44.0 | 0.75 | 19.0 | 8 | 3 | MLT-S | 0.010 | 0.25 | 100 | 1000 |
| MMP172-C316‡ | 316 Stainless Steel | Natural | 1.72 | 44.0 | 0.75 | 19.0 | 8 | 3 | MLT-S | 0.010 | 0.25 | 100 | 1000 |
| MMP172W38-C‡ | 304 Stainless Steel | Natural | 1.72 | 44.0 | 0.38 | 10.0 | 8 | 1 | MLT-S | 0.010 | 0.25 | 100 | 1000 |
| MMP172W38-C316‡ | 316 Stainless Steel | Natural | 1.72 | 44.0 | 0.38 | 10.0 | 8 | 1 | MLT-S | 0.010 | 0.25 | 100 | 1000 |
| MMP350W17-Q | 304 Stainless Steel | Natural | 3.50 | 89.0 | 1.73 | 44.0 | 23 | 6 | MLT-S | 0.015 | 0.38 | 25 | 250 |

*See page E4.2 for Panduit Factory Custom Marking Service information.

**See pages B3.5 – B3.7 for Pan-Steel® Stainless Steel Cable Ties.

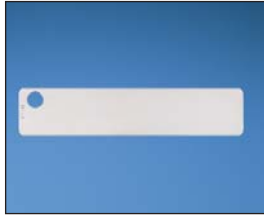
‡Easy feed marker plate with raised cable tie slot.

Table continues on page E4.4

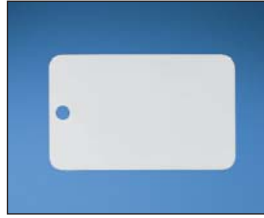
A. System Overview

Stainless Steel and Brass Marker Plates and Tags (continued)

B1. Cable Ties



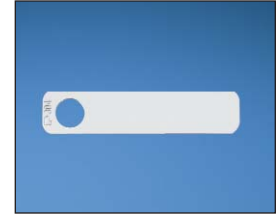
MT350-C



MT350W17-Q



MT172-C



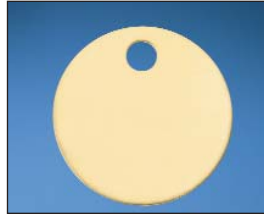
MT172W38-C

B2. Cable Accessories

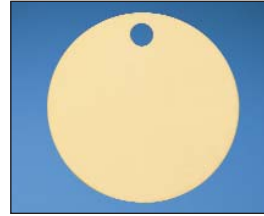
B3. Stainless Steel Ties



MTB1D-Q



MTB150D-Q



MTB213D-Q



MT125S-Q

C1. Wiring Duct

C2. Surface Raceway

C3. Abrasion Protection

C4. Cable Management

D1. Terminals

D2. Power Connectors

D3. Grounding Connectors

E1. Labeling Systems

E2. Labels

E3. Pre-Printed & Write-On Markers

E4. Permanent Identification

E5. Lockout/Tagout & Safety Solutions

F. Index

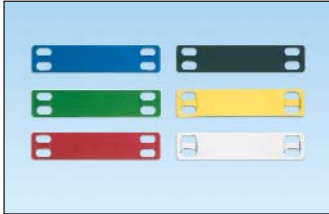
| Part Number | Material | Color | Length/ Diameter | | Width | | Custom Marking Parameters* | | Used with Pan-Steel® Cable Ties** | Thickness | | Std. Pkg. Qty. | Std. Ctn. Qty. |
|--------------------|---------------------|---------|---------------------|----------------|------------------|------|---|-----------------------|---|-----------|------|----------------------|----------------------|
| | | | In. | mm | In. | mm | Max. 3/16" (4.77mm) Character Per Line | Max. Lines of Text | | In. | mm | | |
| MT350-C | 304 Stainless Steel | Natural | 3.50 | 89.0 | 0.75 | 19.0 | 26 | 3 | MLT-S | 0.010 | 0.25 | 100 | 1000 |
| MT350-C316 | 316 Stainless Steel | Natural | 3.50 | 89.0 | 0.75 | 19.0 | 26 | 3 | MLT-S | 0.010 | 0.25 | 100 | 1000 |
| MT350W17-Q | 304 Stainless Steel | Natural | 3.50 | 89.0 | 1.73 | 44.0 | 26 | 6 | MLT-S | 0.015 | 0.38 | 25 | 250 |
| MT172-C | 304 Stainless Steel | Natural | 1.72 | 44.0 | 0.75 | 19.0 | 10 | 3 | MLT-S | 0.010 | 0.25 | 100 | 1000 |
| MT172-C316 | 316 Stainless Steel | Natural | 1.72 | 44.0 | 0.75 | 19.0 | 10 | 3 | MLT-S | 0.010 | 0.25 | 100 | 1000 |
| MT172W38-C | 304 Stainless Steel | Natural | 1.72 | 44.0 | 0.38 | 10.0 | 10 | 1 | MLT-S | 0.010 | 0.25 | 100 | 1000 |
| MT1D-Q | 304 Stainless Steel | Natural | — | — | 1.00 circular | 25.0 | 5 | 1 | MLT-S | 0.035 | 0.89 | 25 | 250 |
| MT1D-Q316 | 316 Stainless Steel | Natural | — | — | 1.00 circular | 25.0 | 5 | 1 | MLT-S | 0.035 | 0.89 | 25 | 250 |
| MTB1D-Q | Brass | Brass | — | — | 1.00 circular | 25.0 | 5 | 1 | MLT-S | 0.040 | 1.02 | 25 | 250 |
| MT150D-Q | 304 Stainless Steel | Natural | — | — | 1.50 circular | 38.0 | 5, 6, 5 | 3 | MLT-S | 0.035 | 0.89 | 25 | 250 |
| MT150D-Q316 | 316 Stainless Steel | Natural | — | — | 1.50 circular | 38.0 | 5, 6, 5 | 3 | MLT-S | 0.035 | 0.89 | 25 | 250 |
| MTB150D-Q | Brass | Brass | — | — | 1.50 circular | 38.0 | 5, 6, 5 | 3 | MLT-S | 0.040 | 1.02 | 25 | 250 |
| MT213D-Q | 304 Stainless Steel | Natural | — | — | 2.13 circular | 54.0 | 6, 12, 8 | 3 | MLT-S | 0.015 | 0.38 | 25 | 250 |
| MT213D-Q316 | 316 Stainless Steel | Natural | — | — | 2.13 circular | 54.0 | 6, 12, 8 | 3 | MLT-S | 0.015 | 0.38 | 25 | 250 |
| MTB213D-Q | Brass | Brass | — | — | 2.13 circular | 54.0 | 6, 12, 8 | 3 | MLT-S | 0.015 | 0.38 | 25 | 250 |
| MT125S-Q | 304 Stainless Steel | Natural | 1.25 square | 32.0 square | 1.25 square | 32.0 | 5 | 2 | MLT-S | 0.035 | 0.89 | 25 | 250 |

*See page E4.2 for Panduit Factory Custom Marking Service information.

**See pages B3.5 – B3.7 for Pan-Steel® Stainless Steel Cable Ties.

Aluminum Marker Plates – Pan-Alum™ MMP Series

- Lightweight, aluminum construction for flexibility and ease of handling
- Five color options in addition to natural aluminum provide quick visual identification, ideal for applications requiring color-coding
- Easy feed marker plate design includes a raised slot to simplify cable tie installation and improve productivity



| Part Number | Material | Color | Length | | Width | | Custom Marking Parameters** | | Used with Pan-Alum™ Cable Ties | Std. Pkg. Qty. | Std. Ctn. Qty. |
|----------------------|----------|---------|----------------------|-------------------|-------|------|---|------------|--------------------------------|----------------|----------------|
| | | | In. | mm | In. | mm | Max. 3/16" (4.77mm) Characters per Line | Max. Lines | | | |
| | | | MMP350H-CALBU | Anodized Aluminum | Blue | 3.50 | 89.0 | 0.75 | | | |
| MMP350H-CALGR | Green | 100 | 1000 | | | | | | | | |
| MMP350H-CALRD | Red | 100 | 1000 | | | | | | | | |
| MMP350H-CALBL | Black | 100 | 1000 | | | | | | | | |
| MMP350H-CALYL | Yellow | 100 | 1000 | | | | | | | | |
| MMP350H-CAL | Aluminum | Natural | | | | | | | | 100 | 1000 |

*See Pan-Alum™ Aluminum Ties on page B3.10 for matching natural finish and five colors.

**See page, E4.2 for Panduit Factory Custom Marking Service.

NEW! Metal Embossing Hand Tool and Tape System

- New multi-functional cutting die design creates embossed marker plates with raised cable tie slot in one step instead of three, for faster installation
- Lightweight, compact and portable, allows user to create custom length identification on demand at remote job sites
- Embosses 3/16" characters onto stainless steel or aluminum tape, to improve visibility in applications that are subjected to dirt or paint



| Part Number | Part Description | Std. Pkg. Qty. |
|-----------------|---|----------------|
| Tool Kit | | |
| MEHT187 | Includes tool, additional marking wheel, carrying case, one roll each META (aluminum) and METS (stainless steel) tape. Characters included: A B C D E F G H I J K L M N O P Q R S T U V W X Y Z 1 2 3 4 5 6 7 8 9 / () | 1 |
| Tape | | |
| META-X | .50" x 16' (12.7mm x 4.9m) aluminum tape*. | 10 |
| METS3-X | .50" x 21' (12.7mm x 6.4m) 316 grade stainless steel tape. | 10 |
| METS4-X | .50" x 21' (12.7mm x 6.4m) 304 grade stainless steel tape. | 10 |

*Aluminum ties are recommended for use with aluminum tape to prevent galvanic reaction (corrosion that can occur between stainless steel and aluminum in certain environments).

A. System Overview

Metal Indenting Machine

- Provides quick, easy, and permanent identification with Panduit® Pan-Alum™ Marker Plates and Cable Ties and Pan-Steel® Stainless Steel Marker Plates, Tags, Cable Ties and Straps
- Automatic table indexing advances material forward for convenience and improved productivity
- New, improved design features aluminum base and durable construction

B1. Cable Ties

B2. Cable Accessories



B3. Stainless Steel Ties

| Part Number | Part Description | Std. Pkg. Qty. |
|--------------------------|--|----------------|
| Indenting Machine | | |
| MIM094 | Indenting machine with 3/32" (2.38mm) character wheel. | 1 |
| MIM125 | Indenting machine with 1/8" (3.18mm) character wheel. | 1 |
| MIM187 | Indenting machine with 3/16" (4.77mm) character wheel. | 1 |

Interchangeable Wheel Kits

| | | |
|---------------|---|---|
| MIW094 | 3/32" (2.38mm) character wheel kit (wheel and indexing gear). | 1 |
| MIW125 | 1/8" (3.18mm) character wheel kit (wheel and indexing gear). | 1 |
| MIW187 | 3/16" (4.77mm) character wheel kit (wheel and indexing gear). | 1 |

C1. Wiring Duct



C2. Surface Raceway

C3. Abrasion Protection

NEW! Portable Embossing System*

- Easily moved from jobsite to jobsite to deliver a permanent identification solution where it's needed, when it's needed
- Creates raised characters on stainless steel and aluminum marker plates, to deliver maximum visibility for medium to high volume applications that are exposed to dirt and paint
- Improves productivity by providing a reliable connection from the embossing machine to your PC using Easy-Mark™ Software
- Easy-Mark™ Software allows for a quick print legend and exact preview saving time and reducing print costs
- Easy loading hopper allows for easy stacking of up to 200 plates, saving time and money

C4. Cable Management

D1. Terminals



| Part Number | Part Description | Std. Pkg. Qty. |
|----------------|---|----------------|
| PES197* | Portable embossing system 3/16" (4.77mm) character, 11.5" (292mm) x 21.0" (534mm) x 19.0" (483mm), 95 lbs. (43 kg), 115 volt, 60 Hz with Easy-Mark™ Software. | 1 |

Characters include: ABCD...Z, 0123...9, ! @ # \$ % & * () - + = : " ' . / ?

*For use with 1000 pack marker plates only.

System Requirements: Designed for Windows^ 98, Windows MS, Windows 2000, Windows NT 4.x, Windows XP, Windows Vista 64 MB hard drive space, and 64 MB RAM (256 MB RAM recommended). Female DB9 serial communication port.

^Windows is either a registered trademark or trademark of Microsoft Corporation in the United States and/or other countries.

D2. Power Connectors

D3. Grounding Connectors

E1. Labeling Systems

E2. Labels

E3. Pre-Printed & Write-On Markers

E4. Permanent Identification

E5. Lockout/Tagout & Safety Solutions

F. Index

| Part Number | Material | Color | Length/Diameter | | Width | | Max. 3/16" (4.77mm) Character Per Line | Thickness | | Std. Pkg. Qty. | Std. Ctn. Qty. | |
|---------------------------------|---------------------|---------|-----------------|----|-------|------|--|-----------|------|----------------|---------------------|------|
| | | | In. | mm | In. | mm | | In. | mm | | | |
| Pan-Steel® Marker Plates | | | | | | | | | | | | |
| MMP350-M | 304 Stainless Steel | Natural | 3.50 | 89 | 0.75 | 19 | 18 | 0.010 | 0.25 | 1000 | 4000 | |
| MMP350-M316 | 316 Stainless Steel | | | | | | | | | 1000 | 4000 | |
| MMP350H-M | 304 Stainless Steel | | | | | | | | | 1000 | 4000 | |
| MMP350H-M316 | 316 Stainless Steel | 1000 | | | | | | | | 4000 | | |
| MMP350H-MALBU | Anodized Aluminum | Blue | | | | | | | | 1000 | 4000 | |
| MMP350H-MALGR | | Green | | | | | | | | 1000 | 4000 | |
| MMP350H-MALRD | | Red | | | 1000 | 4000 | | | | | | |
| MMP350H-MALBL | | Black | | | 1000 | 4000 | | | | | | |
| MMP350H-MALYL | | Yellow | | | 1000 | 4000 | | | | | | |
| MMP350H-MAL | Aluminum | Natural | | | 0.54 | 13.7 | 0.012 | 0.30 | 1000 | 4000 | | |
| MMP350HW54-MAL | | | | | | | | | | | 1000 | 4000 |
| MMP350W38-M | | | | | | | | | | | 304 Stainless Steel | 1000 |
| MMP350W38-M316 | 316 Stainless Steel | 1000 | 4000 | | | | | | | | | |